

Kuşadası Production Center Aydın, Turkey



Table of Content

Introduction

Literature Review

Case Studies

The Design

Views



Introduction

Kuşadası, Aydın



1

2

3

Preserved Area/Archeological Site

In the 7th century BC, the Lydians, whose capital was Sardis, dominated the region. The construction and land use in this region, which is considered as the Neopolis Ancient City, and its surrounding archaeological sites have become a problem in the conservation process. Although it took a long time to determine the protected areas due to intense construction, this area is protected today. In order not to increase the deformation, restrictions were imposed on the construction. This region, which is between the cities of Neopolis and Ephesos, is one of the important ancient cities. The fact that it has various findings emphasizes the importance of the region.



Güvercinada Castle

Güvercinada Castle, located in the Kuşadası district of Aydın, was built to protect the Kuşadası Bay harbor in the past, and is a structure that covers the entire Güvercinada, which is used for touristic purposes today. The part of the castle, called the inner castle, was built by Barboros Hayrettin Pasha and the walls were built by İlyas Ağa. The port, known as today Kuşadası, is open to storms and enemy attacks. Therefore, the natural rock in front of the port gained strategic importance. Open to storms and attacks by enemy fleets, the island in front of the harbor is fortified with a Tower and Outer Wall, built at different times. Much later, the island was surrounded by a wall and a defense line was formed in front of the port, which is difficult to pass.



Kuşadası Production Center Aydın , Turkey

Kuşadası Port is a port located in Aydın's Kuşadası district and serving cruise ships. Due to the increase in the number of passenger ships arriving at the port, which was put into service in 1973, the 2nd pier was completed in 1991 and its capacity was increased.

Kuşadası in western Turkey is 90 kilometers south of Izmir. It is one of the most attractive towns in the Aegean, as it is close to the most important historical sites. The contrast with the lively holiday life, the harbor and the silence of ancient ruins creates a special atmosphere in Kuşadası.



Olive Oil Production

Of the 1 million 110 thousand tons of olive oil produced in our country, 28% (310 thousand 832 tons) was produced in Aydın.

Olive oil production is a very delicate business. The quality of the olive oil produced is determined by various factors such as the region where the olive tree is located, climatic characteristics, soil conditions, the time of harvesting the olive, and the way it is harvested. For this reason, olive oils produced in our country may differ in terms of quality. The leading region of olive and olive oil production in our country is the Aegean region and especially the province of Aydın.

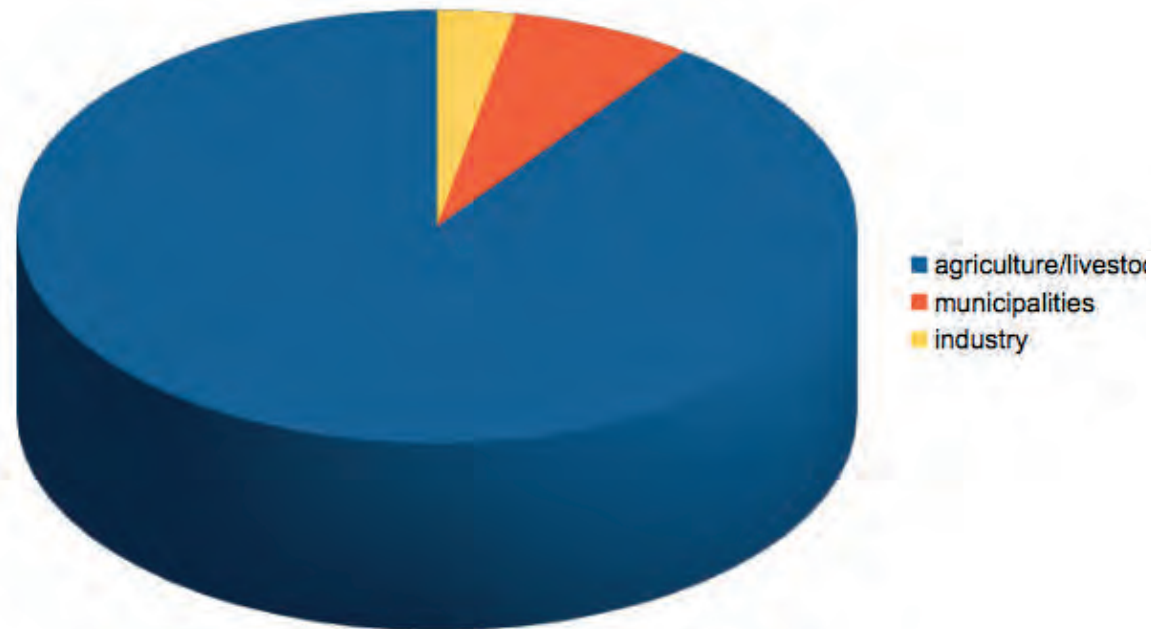




Literature Review

Water Consumption

An average of 1.4 million liters of water is wasted annually for each person in the world. More than 90 percent of this amount of water consists of agricultural works for food production alone. For example, when producing 1 kilogram of red meat, 15 thousand 455 liters of water, 3.6 kilograms of wheat and 36 kilograms of roughage are required. In traditional agriculture, water has to be used for the growth of plants. From the cotton used in clothes to the water used for cleaning, from factory cooling systems to pools in hotels, we are faced with a consumption far beyond what we can calculate, except for gray water.



Water Types

Clean Water

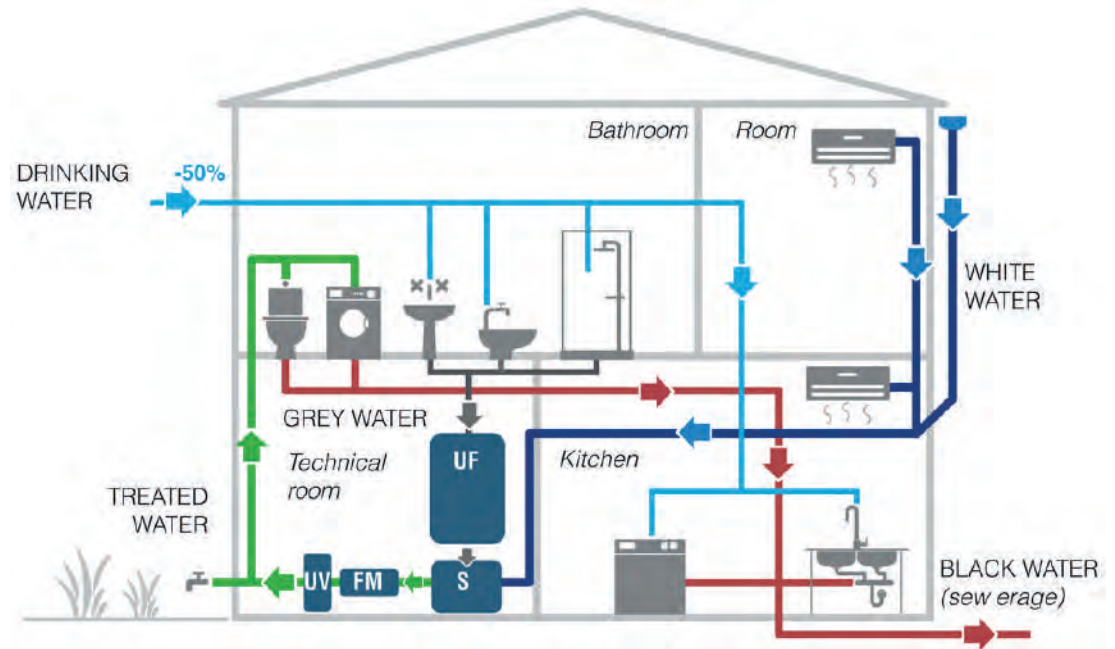
spring water, wells, purified water, rain water

Grey Water

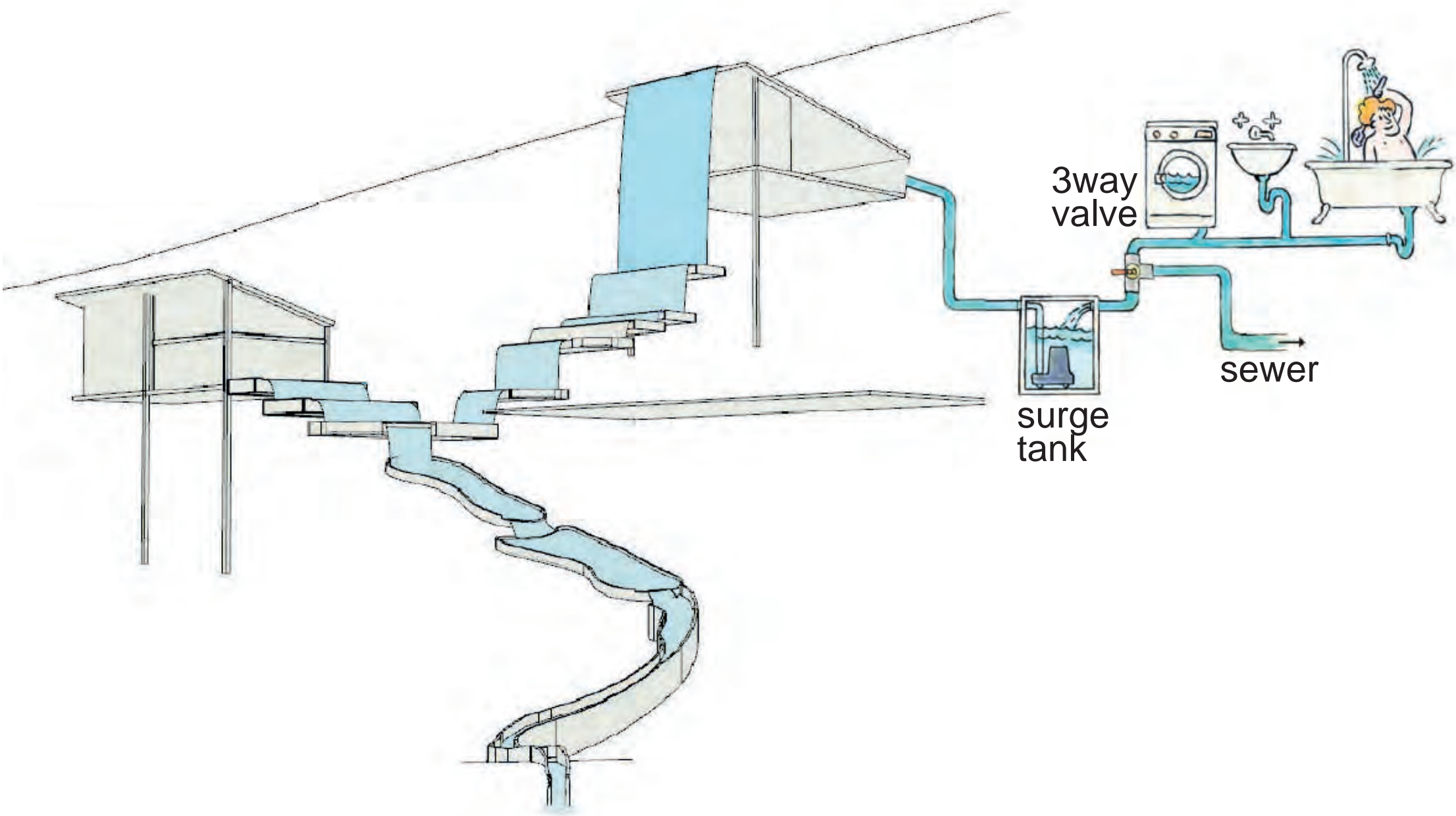
used waters free of chemicals and/or faeces

Black Water

contaminated water (containing feces and/or chemicals)



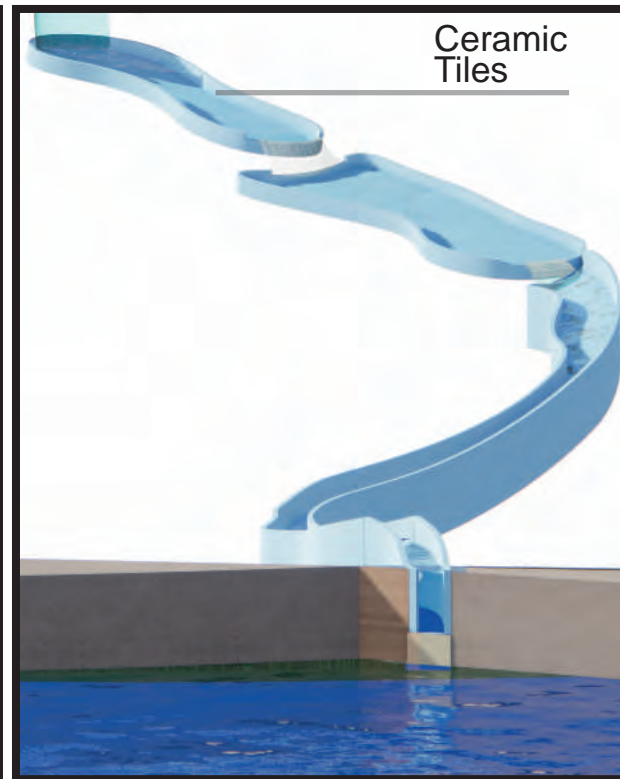
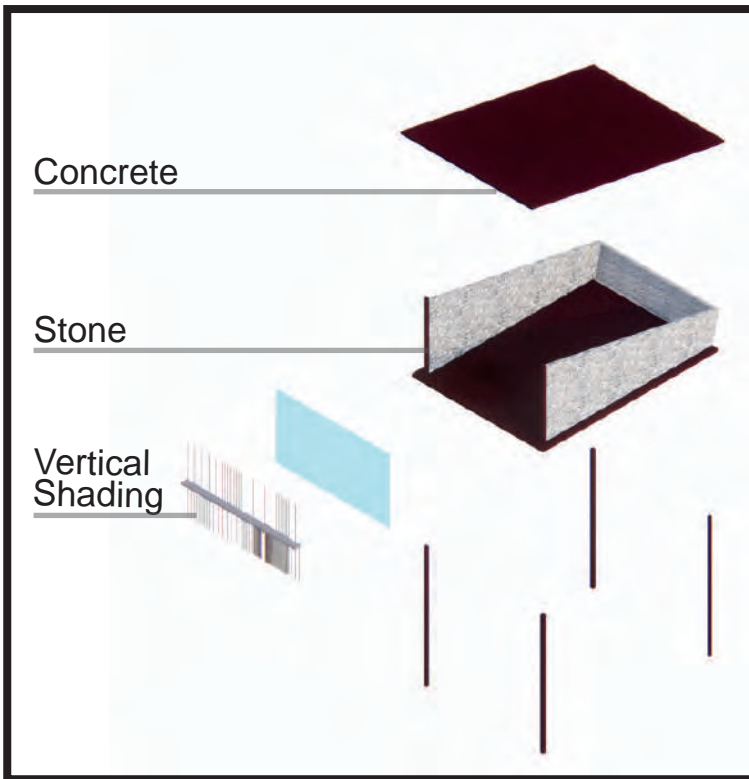
Waste water originating from small businesses such as homes and workplaces, schools, hospitals, and the needs and uses of people in their daily life activities are considered as domestic wastewater. Domestic wastewater has two divisions as gray water and black water. Generally, the water coming from the shower, bath, sink, washing machine and dishwasher is defined as gray water, while the remaining used water is defined as black water. Gray water is evaluated as slightly polluted gray water and highly polluted gray water according to the chemical pollution status.



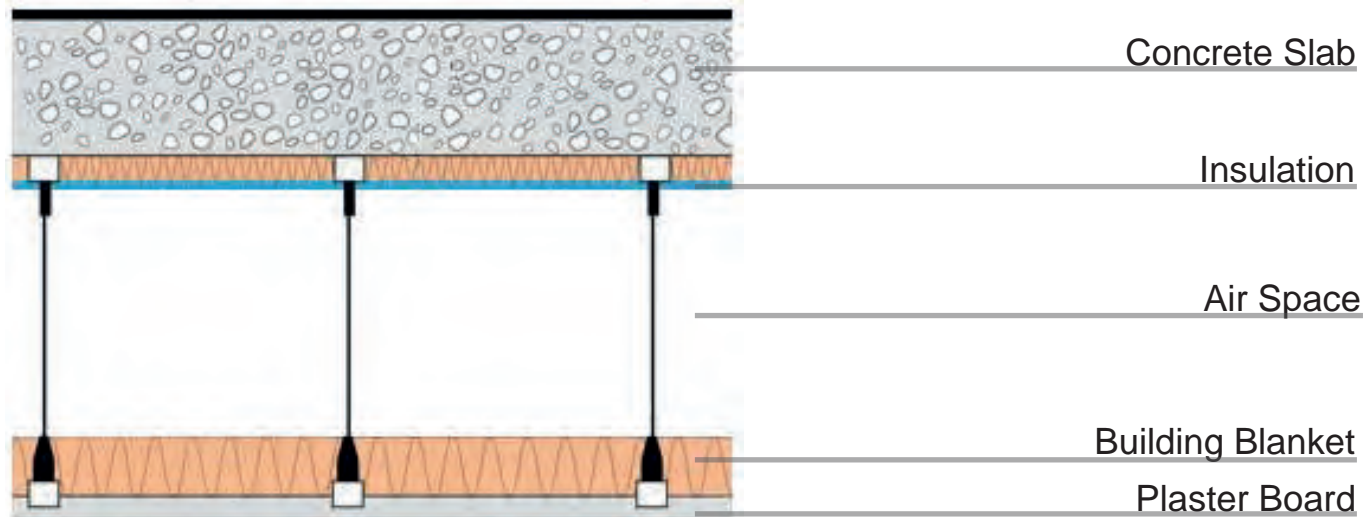
3way
valve

surge
tank

sewer



Indoor Air Film
 Roof Waterproofing Membrane



Indoor Air Film



Case Studies

White Bodrum Houses

According to the 1974 development plans, the two-storey houses are painted white, in order to keep the inside of the houses cool due to the hot climate; The reason why the doors, windows and roadsides are painted blue is because it is believed that insects such as scorpions and snakes will not enter the houses by seeing it as fire.

The bougainvillea flowers of different colors that surround the white houses in Bodrum district add a different beauty to the touristic district. The bougainvillea flowers, which are integrated with the name of Bodrum and have nearly 20 species, appear in the gardens and facades of almost all the houses on the peninsula.



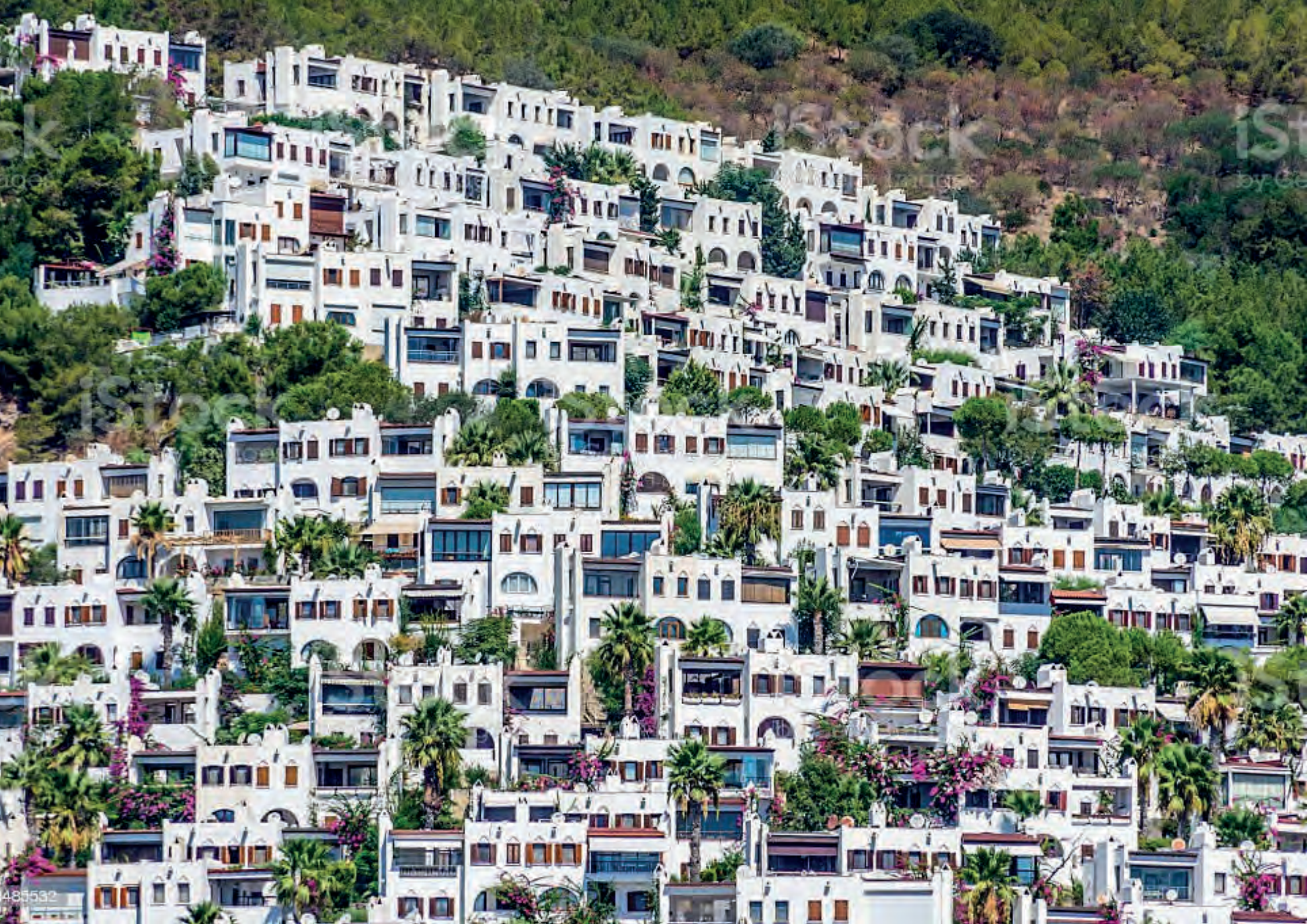
Bodrum, Muğla, Turkey



"Bodrum is on the way to becoming a city by the sea, rather than being a tourism city. Moreover, there is no significant increase in the number of foreign visitors in our district."

-Bodrum Chamber of Commerce (BODTO)
President Mahmut Serdar Kocadon





Liebian International Building

Located in Guiyang in southwest China, the 121-meter-high skyscraper named Liebian International Building was built together with a 108-meter waterfall. In addition to being described as one of the largest artificial waterfalls in the world, it is also the tallest waterfall in a building. The building built by Ludi Industry Group is not yet completed, but the waterfall on its front has been functional for about 2 years. The waterfall in the building works with 4 pumps and these pumps take the water from underground tanks. The water in these tanks consists of rain water.





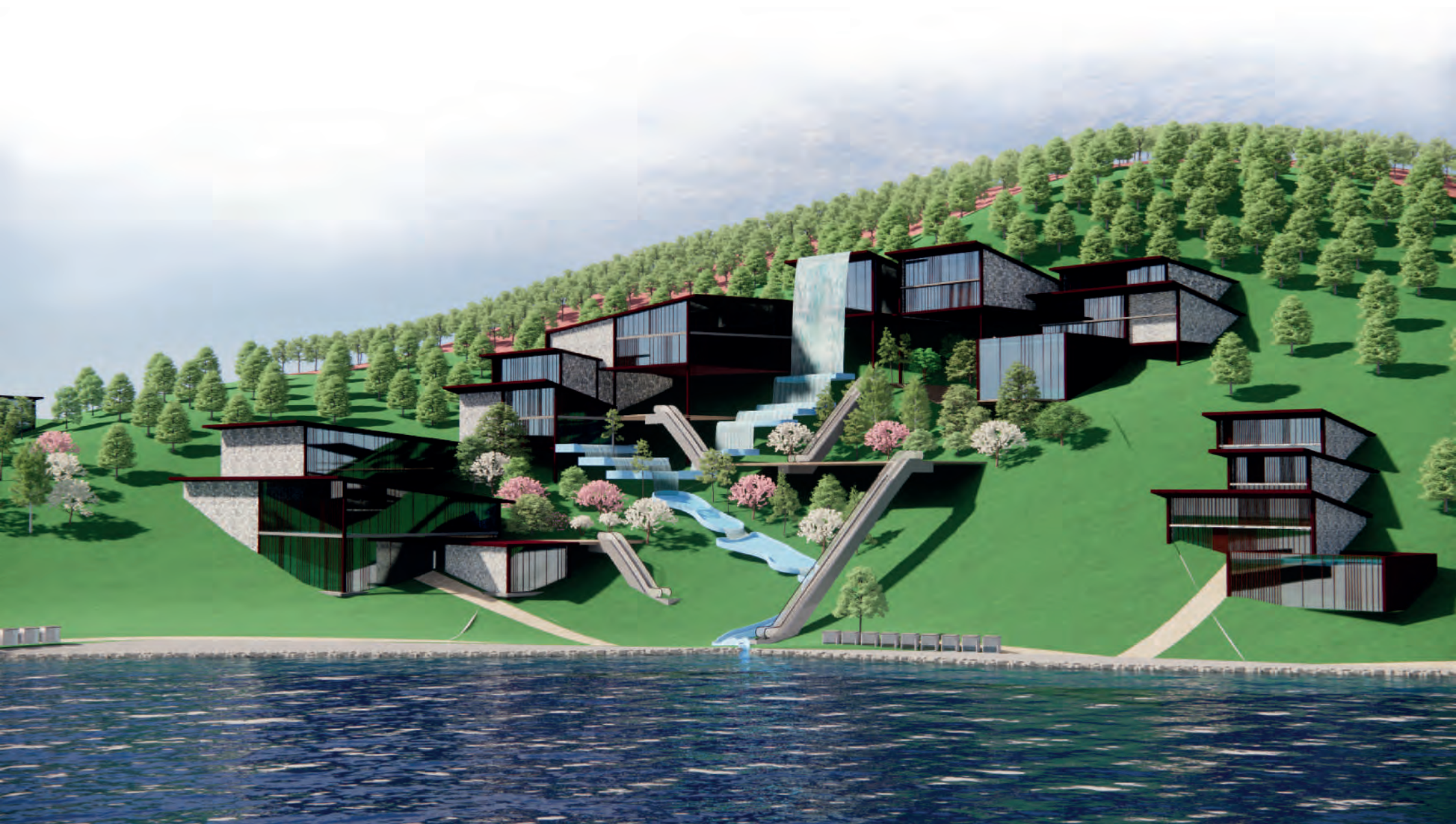
Liebian International Building

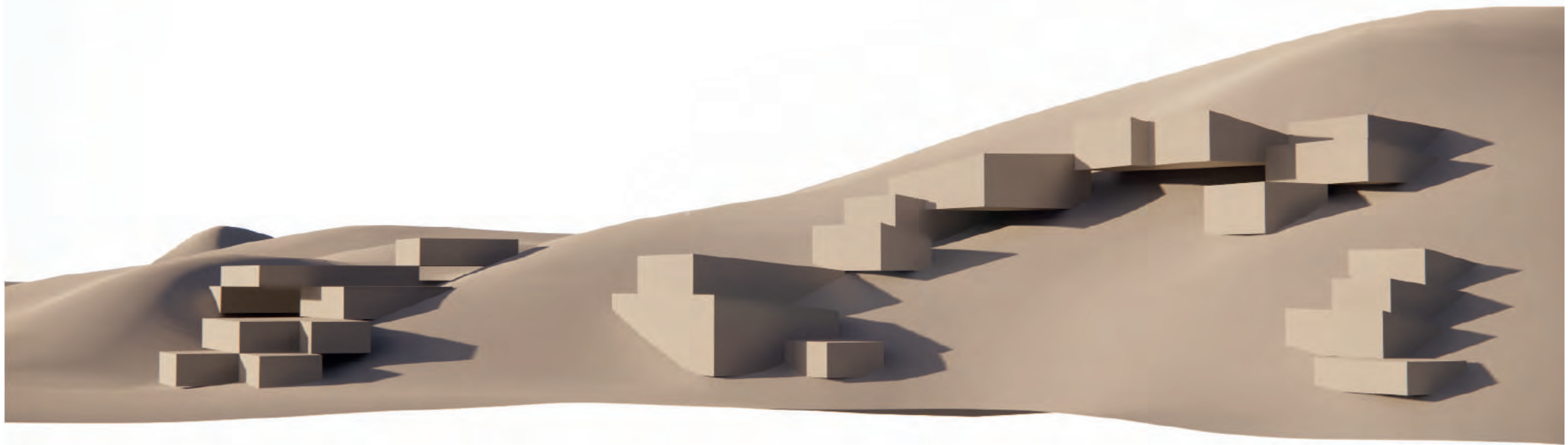
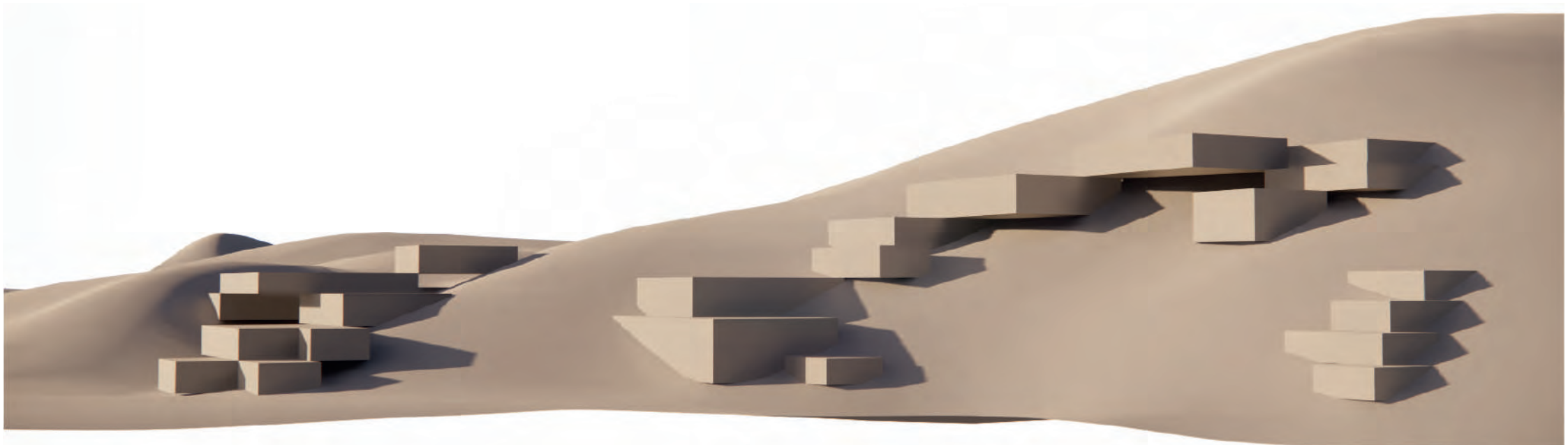
Despite using rainwater and waste tap water for the waterfall, it allegedly costs around £90 per hour to run the 108-metre structure. This would equate to £760,000 per year if waterfall was to be left on constantly.

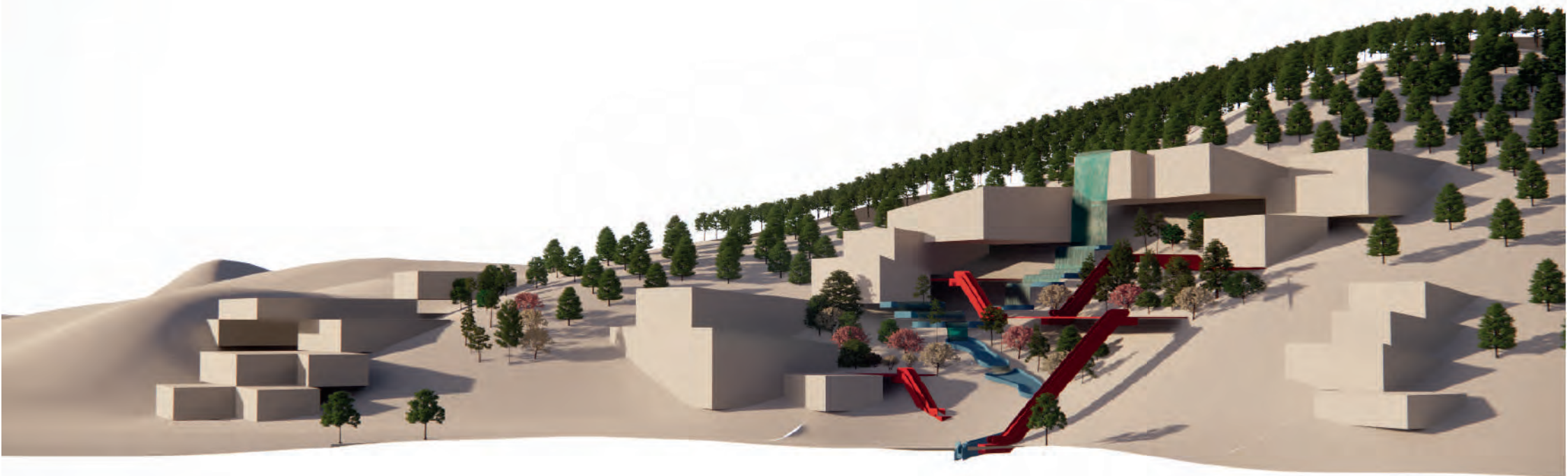
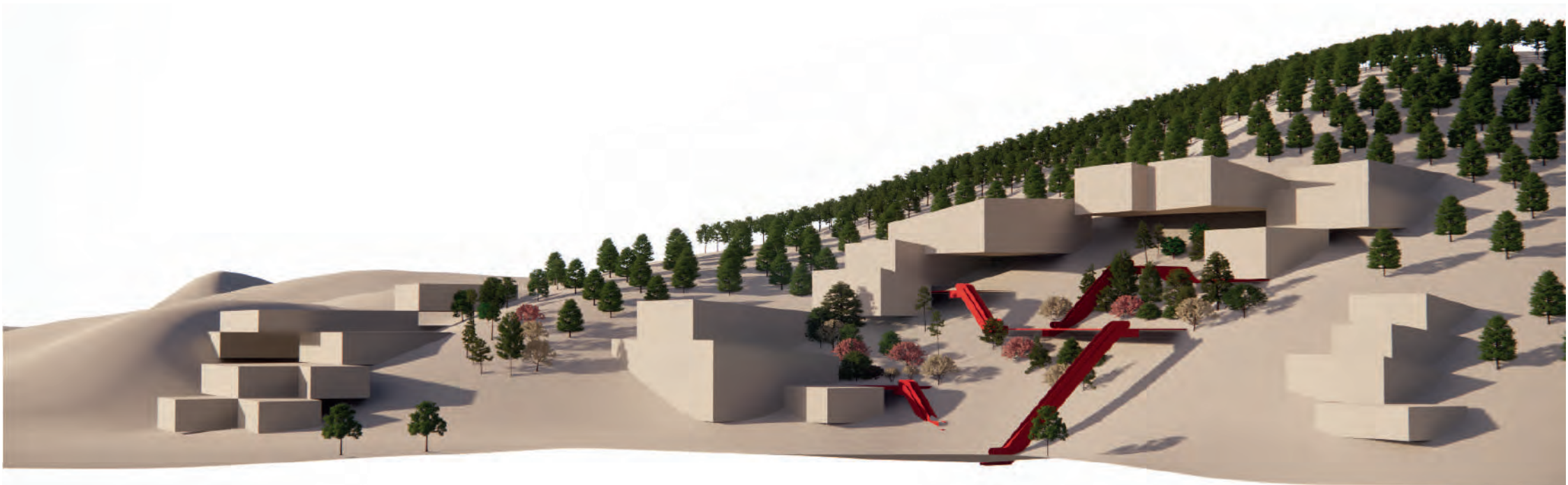
As a result, the building has already been heavily criticised for its high running costs and ostentatious design.



The Design







Views

