

TEACHING PORTFOLIO

Dr. Mark Frederickson & the Tejido Group

For the past thirty years, the Tejido Group has developed into an interdisciplinary and collaborative applied research program in which faculty and professionals in architecture, landscape architecture, and planning work side by side with university graduate and undergraduate students in an apprenticeship-style professional learning environment. Tejido has worked on design and planning projects on five continents.

Tejido is an extension of the applied research and community outreach activities of Mark Frederickson, PhD, LEED AP. The work of Tejido stands as an effective illustration of Dr. Frederickson's leadership, management, and pedagogic strategies, as well as the often exceptional design outcomes of his students' efforts. He is the founder and director of the Tejido Group and the project manager for all projects. The following are excerpts taken from several recent Tejido projects in the U.S., the Czech Republic, Senegal, Mexico, Turkey, Panama, Oman, Palestine, Pakistan, South Africa, and Hong Kong (the underlined title of each project links to a copy of the final published master planning monograph).

PROMOTING GENDER EQUALITY
IN AFRICA, SENEGAL

A Sustainable Rural Living Prototype For Low Income
Women in Sub-Saharan Africa

BİLKENT UNIVERSITY
Faculty of Art, Design and Architecture

SPRING 2021

Mark Paul Frederickson

Recep Ögüç

The Women's House

Phase 4:
Sustainable Community

Phase 3:
Production

Phase 2:
Collaboration /
Local Adoption

Phase 1:
Assembly / Construction

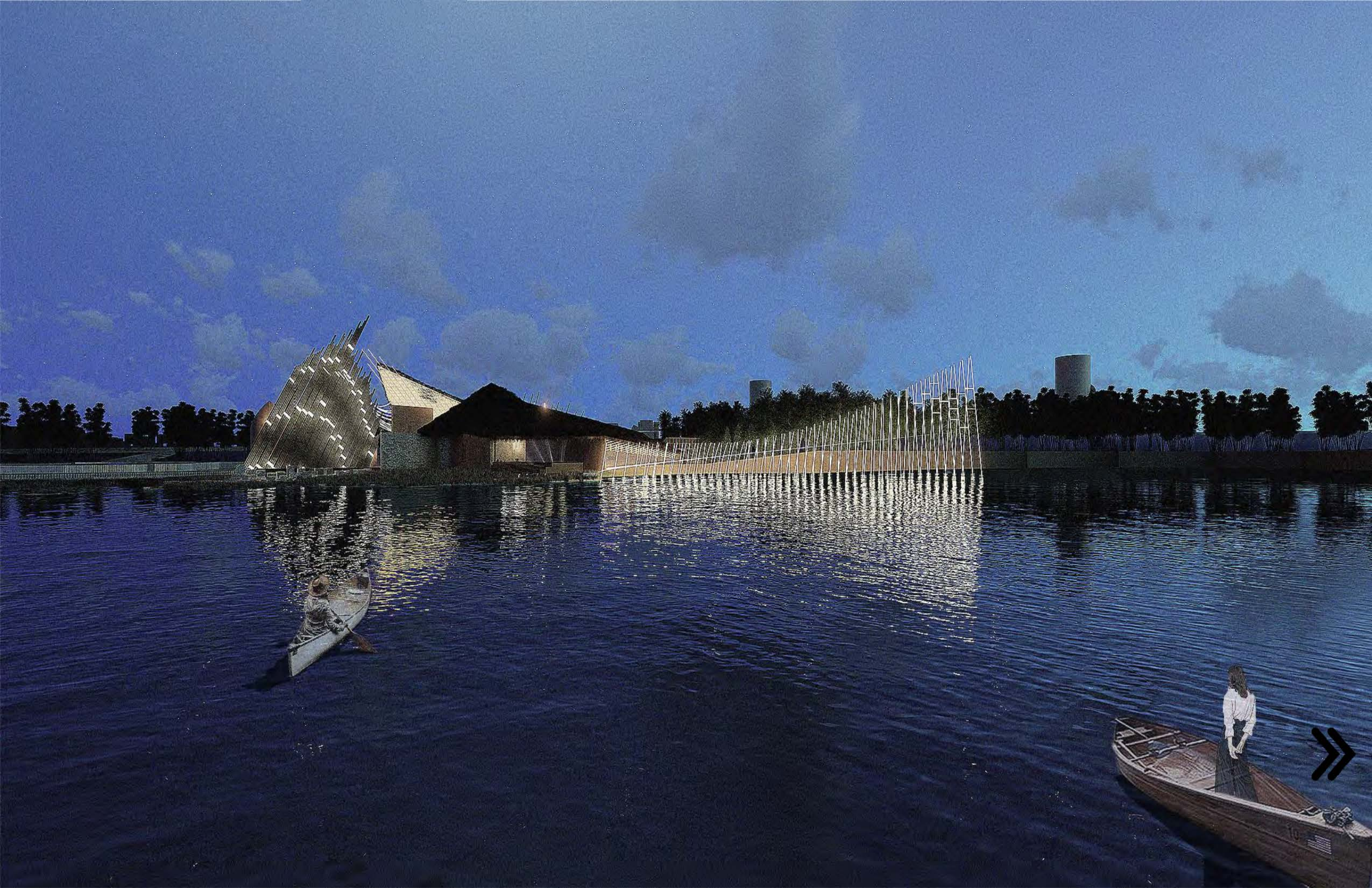


The Women's House
In the memory of all the women who embraced the world.













Segoditshane River Revitalization /Botswana

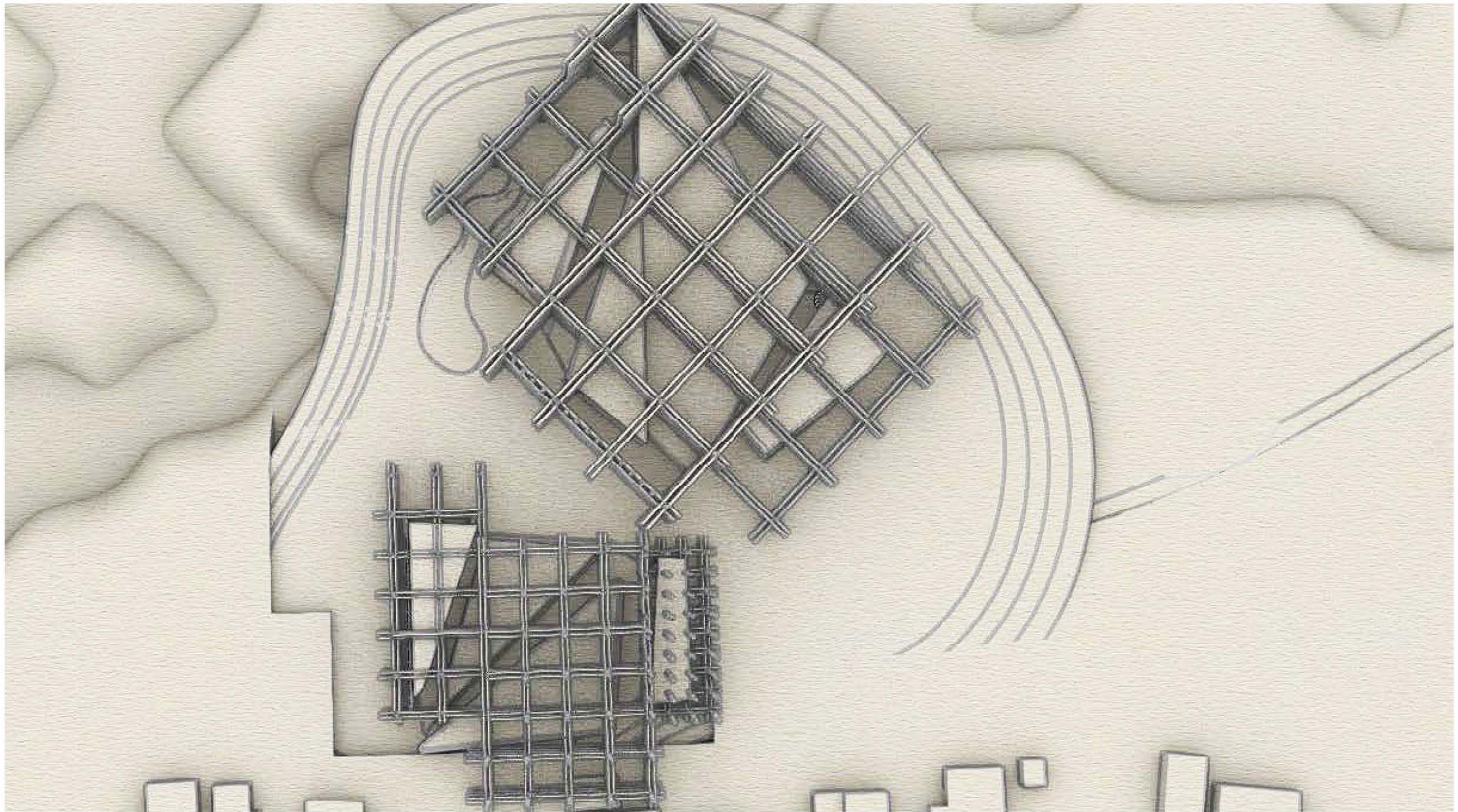
2023 / ARB 421 / 4th year Architecture Projects / University of Botswana /Dr. Katlego Mwale & Dr. Mark Paul Frederickson / Designer: Daniel Ferreira



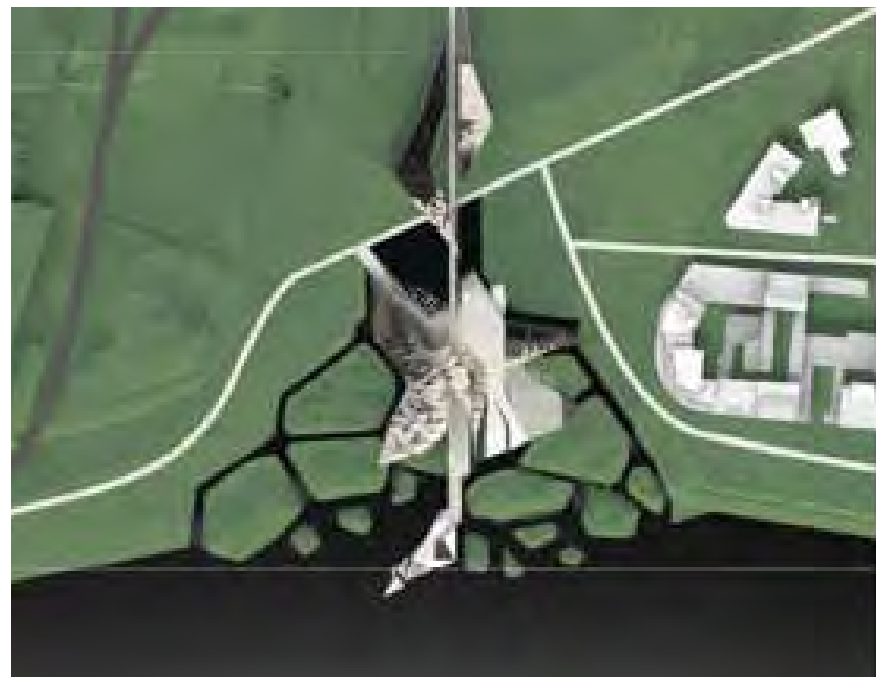
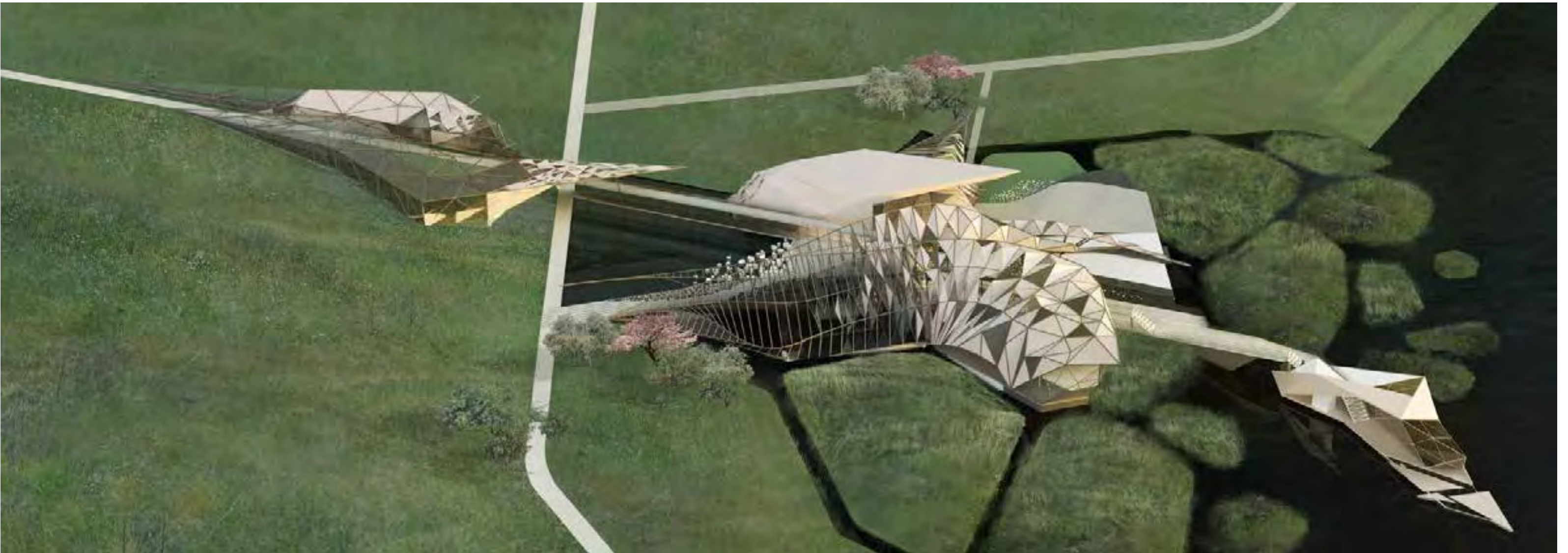




BOTSWANA / Segoditshane River Revitalization for the City of Gaborone / University of Botswana - 4th Year Architecture
Lebogang Sedibelo



Segoditshane River Revitalization / Designer: nloyiso mpofu



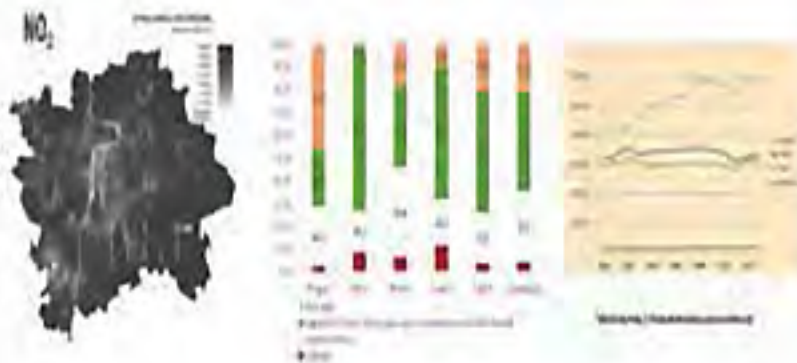


PRAGUE 7 / 4th year studio / Sustainable Urban Development - Brown Field Remediation / Selin Sahin.

ABOUT PRAGUE 7

Historically, the area offered favourable conditions for hunting, fishing, and for agriculture. During the period of Celtic settlement around the year 500 BC the so-called Bubeneč/Dejvice settlement existed here; it was a trade crossroads between north, south, west and east, where many different kinds of goods were exchanged. From the 1st to the 4th centuries AD, one of the largest centres of German iron working was to be found on the territory of today's Prague 6 and 7. With the gradual arrival of the Slavs, however, the centre of settlement shifted in the 8th - 9th centuries to what today is the Old Town.

The historic settlements of Holešovice and Bubeneč form the basis of Prague 7. Today, Prague 7 is a post-industrial site that is slowly developing and is still somewhat isolated from the rest of Prague.



GROWTH IN MOTION : VERTICAL FARM NG AND TRANSPORTATION HUB

Nature and humans: the connection is undeniable and yet, we have perhaps become so disconnected from it as distances have shortened down into minutes through modern technology and various modes of transportation.

Here in the post-industrial Prague 7, the project proposes a new or perhaps a more traditional vision of the future in which the separation once again ceases to exist and men and nature enable each other to prosper.

Drawing from the agricultural history of the site and combining it with its more recent political history, through movement in time and growth interpreted into physical movement, this building project along with its multi-phased masterplan, brings a new value to the Czech society from which they can be proud of.



ABOUT NON-PLACES

A non-place has a huge unused potential. It is usually somewhat only temporarily in existence in the experience of the person, which makes it a very fluid space. This fluidity may perhaps be the perfect environment for changes to start to occur. Once an idea is planted, as time passes and experiences accumulate, it will grow and finally when it's ready, it will present itself as if it has come down from the heavens.



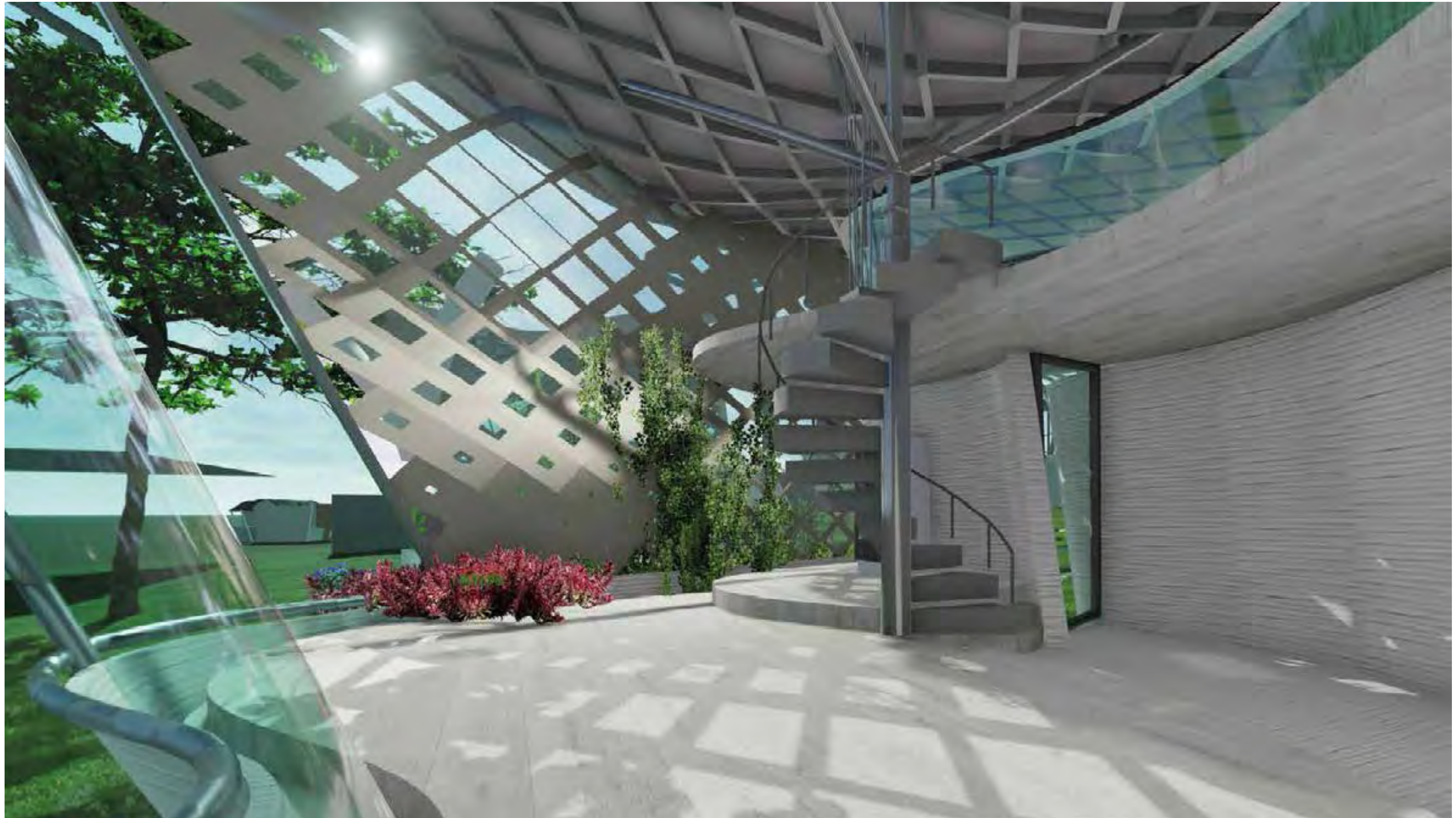
Post Industrial Revitalization / Brewery in Praha 07 / Tuğçe Taşer

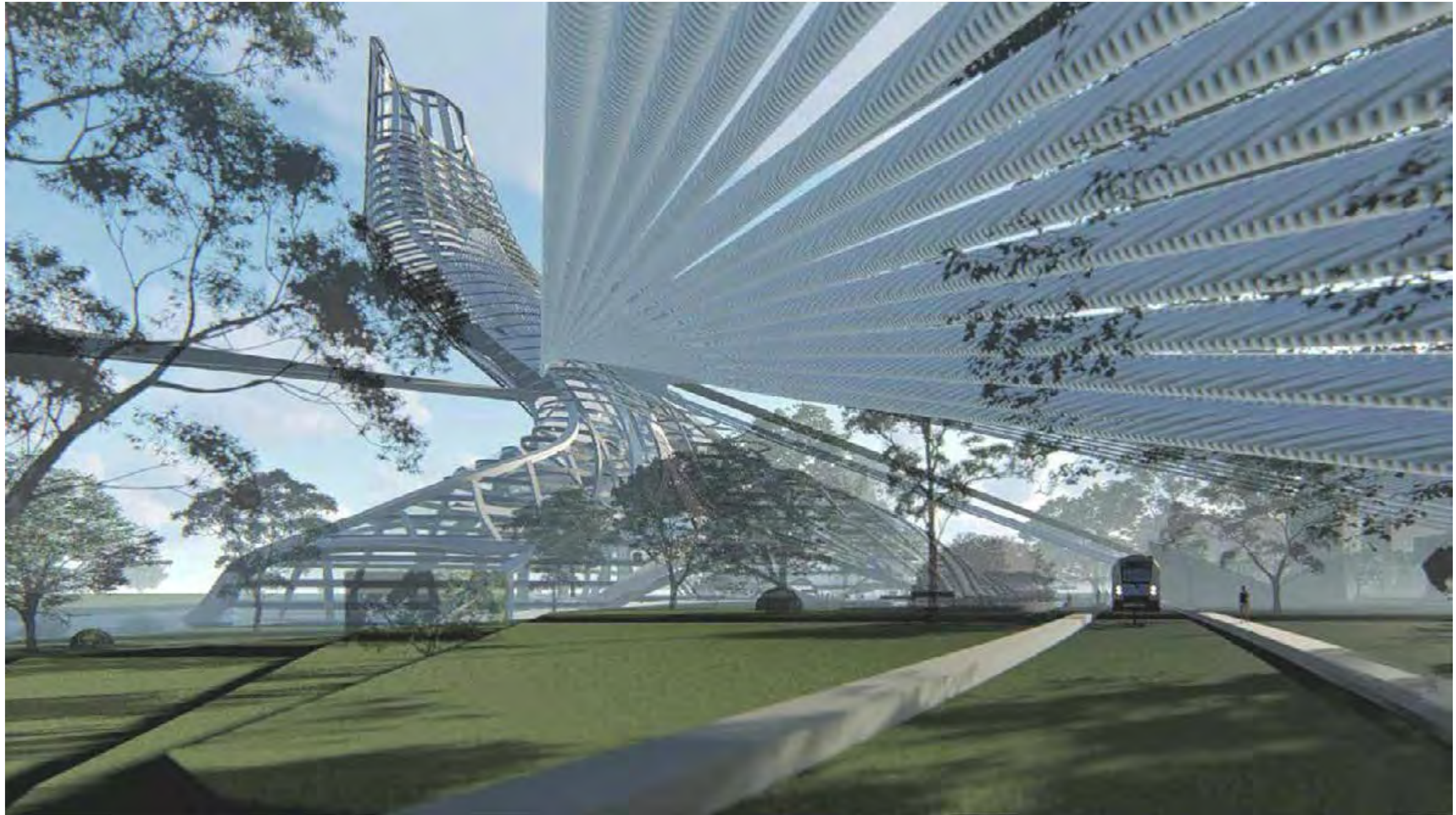


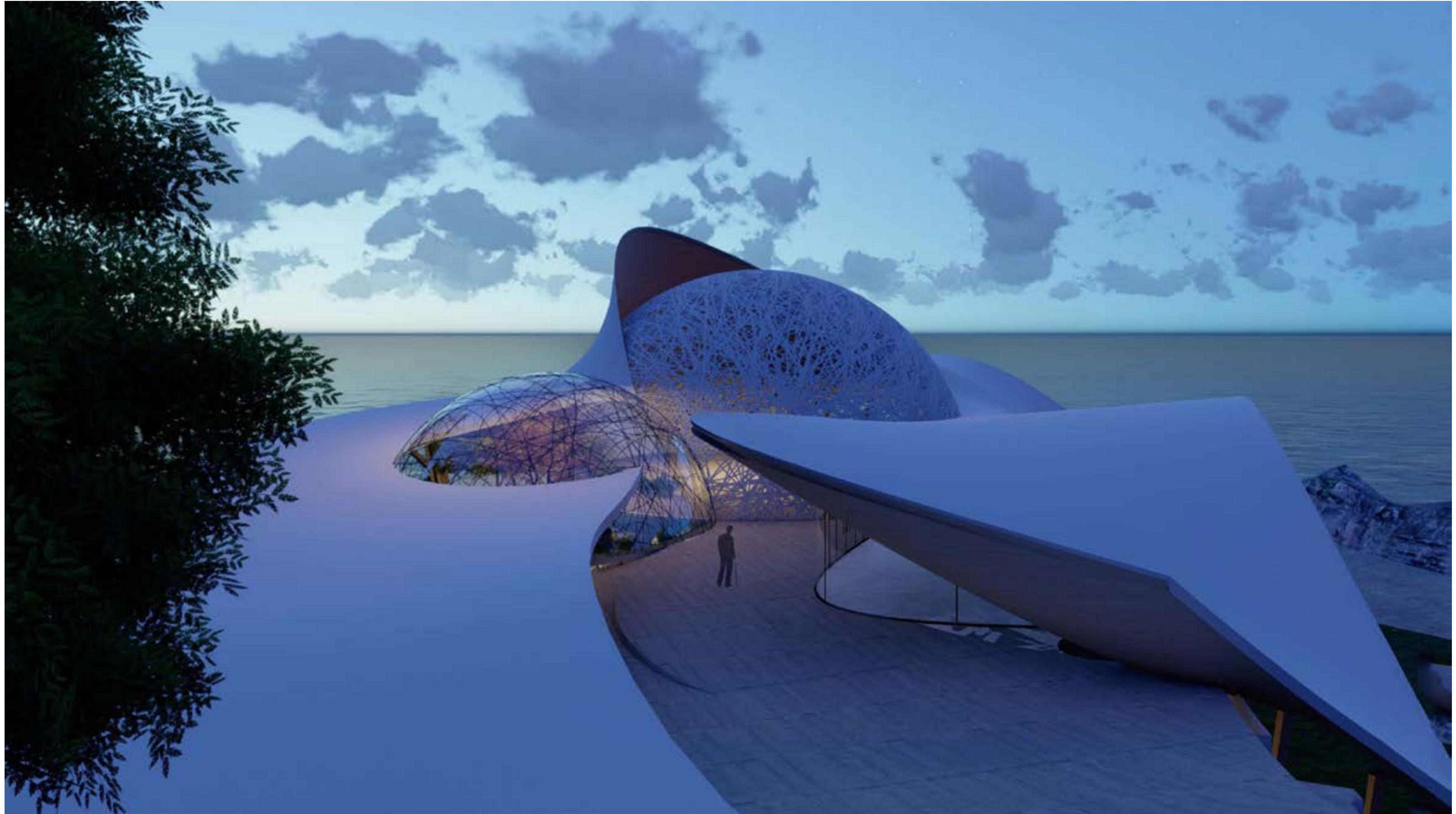


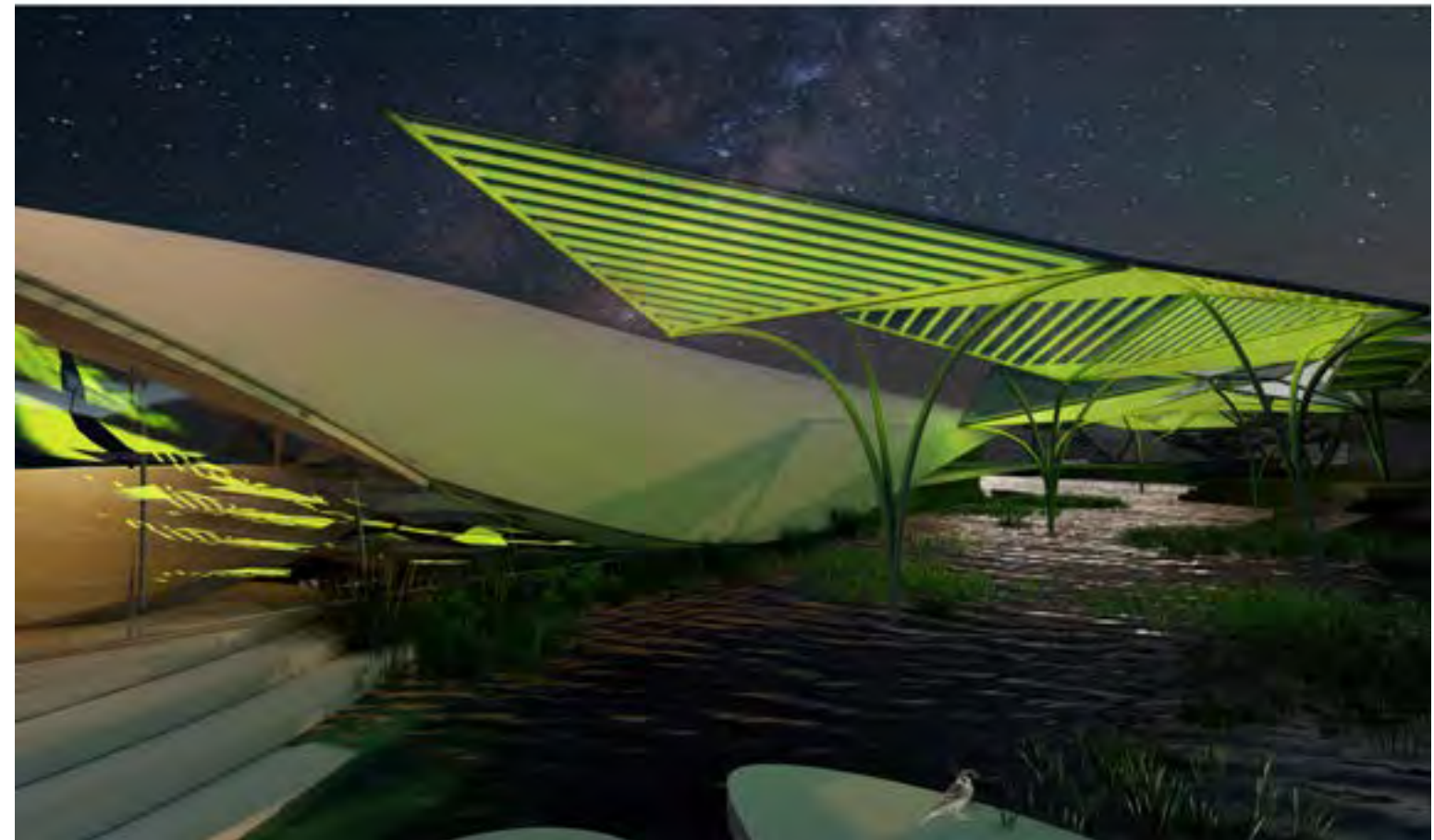
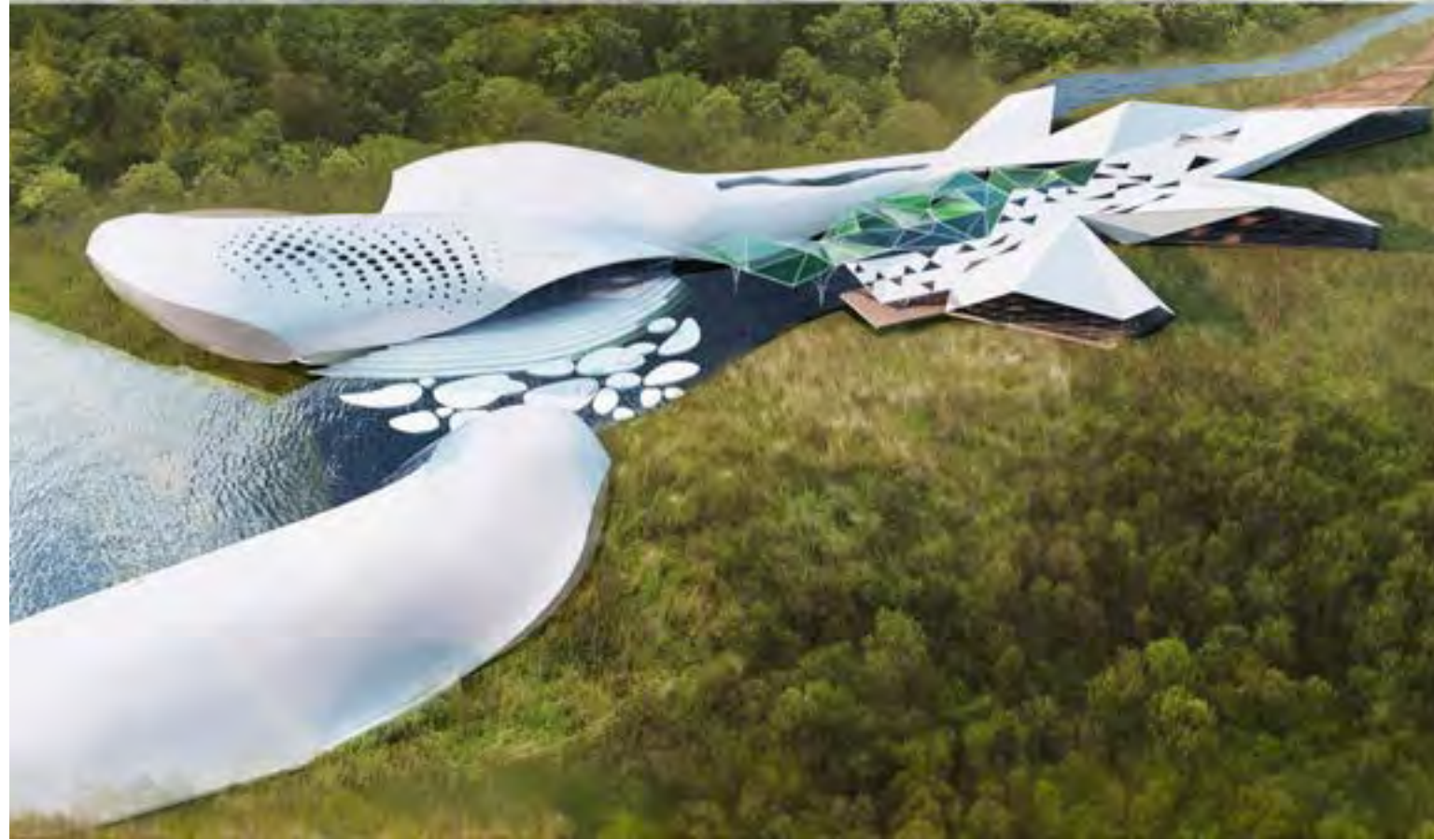










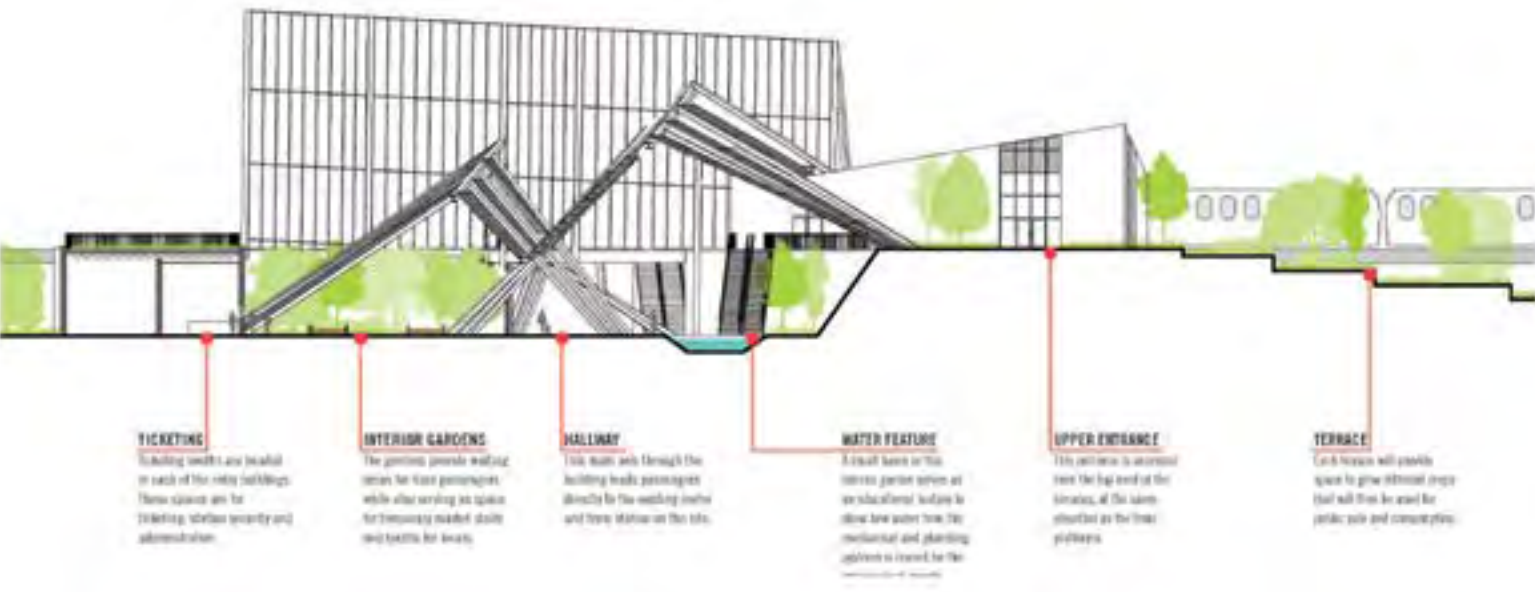
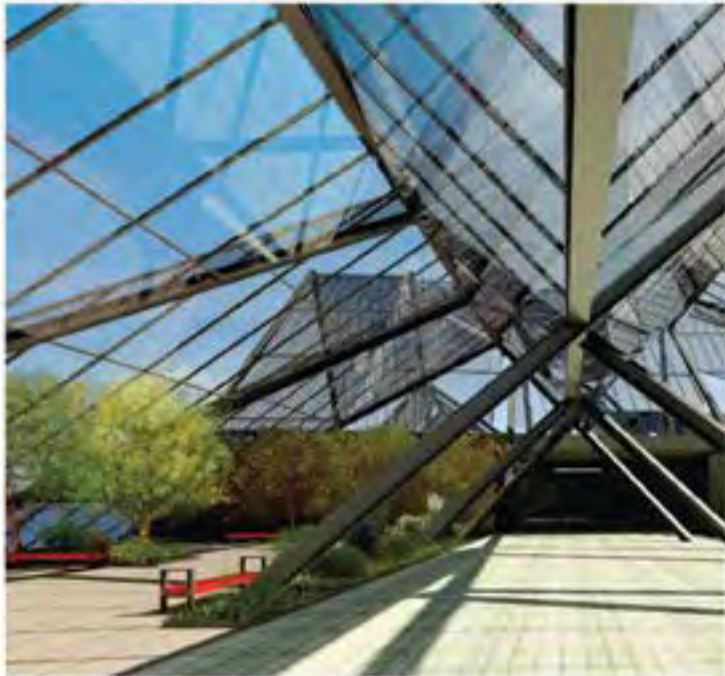




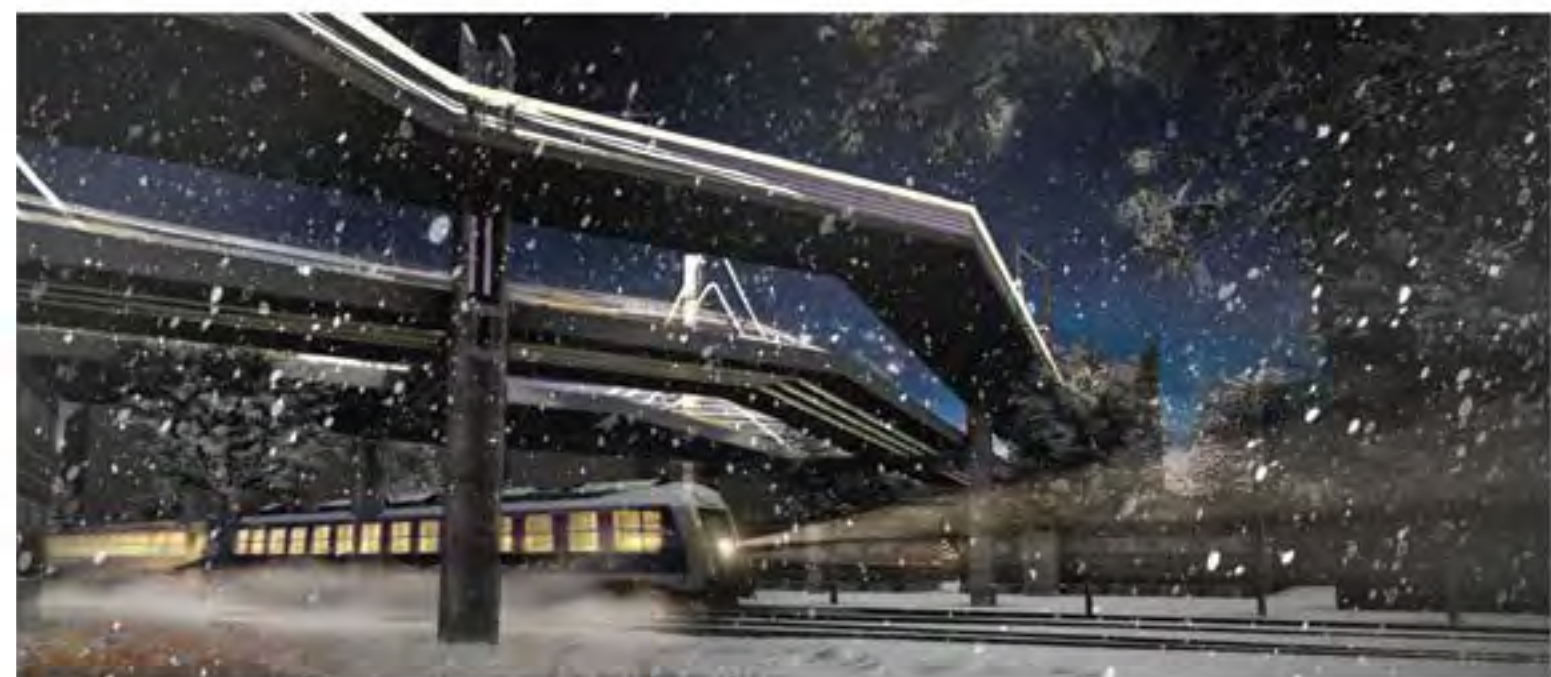
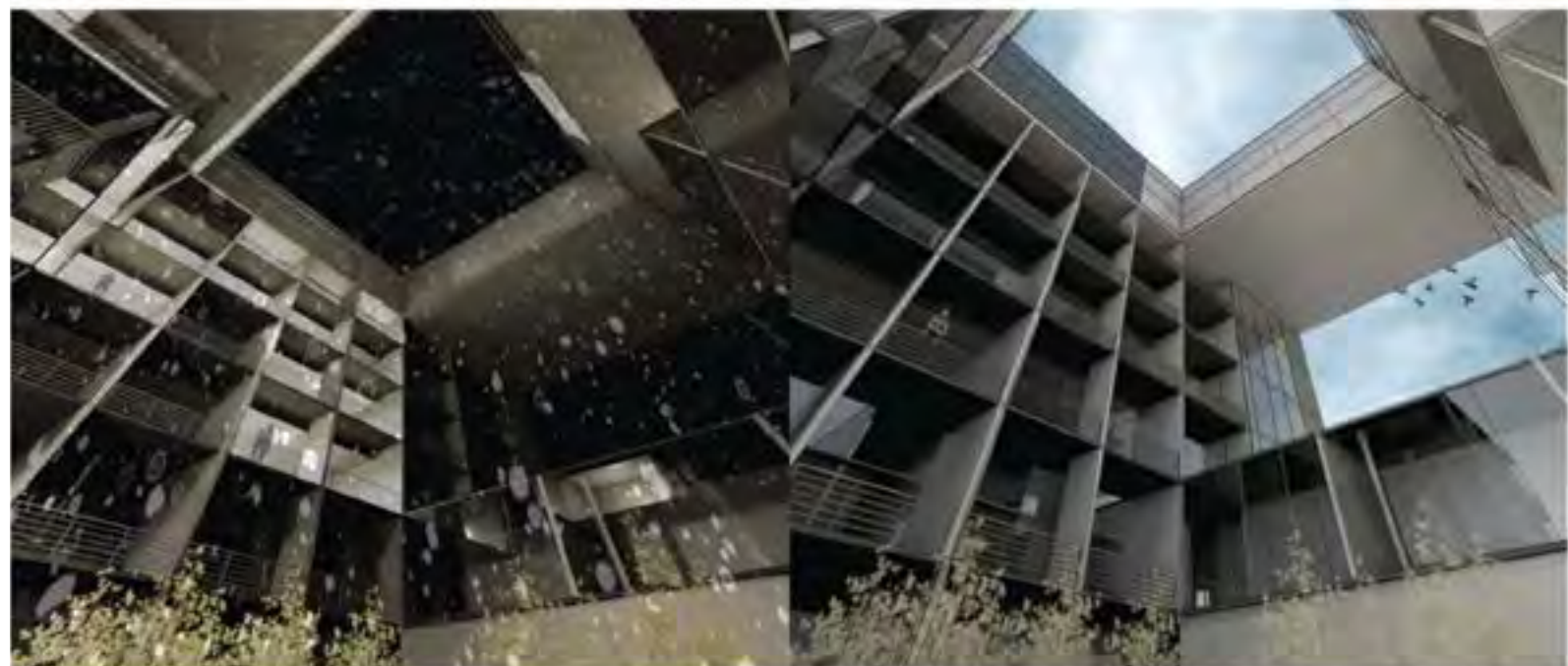
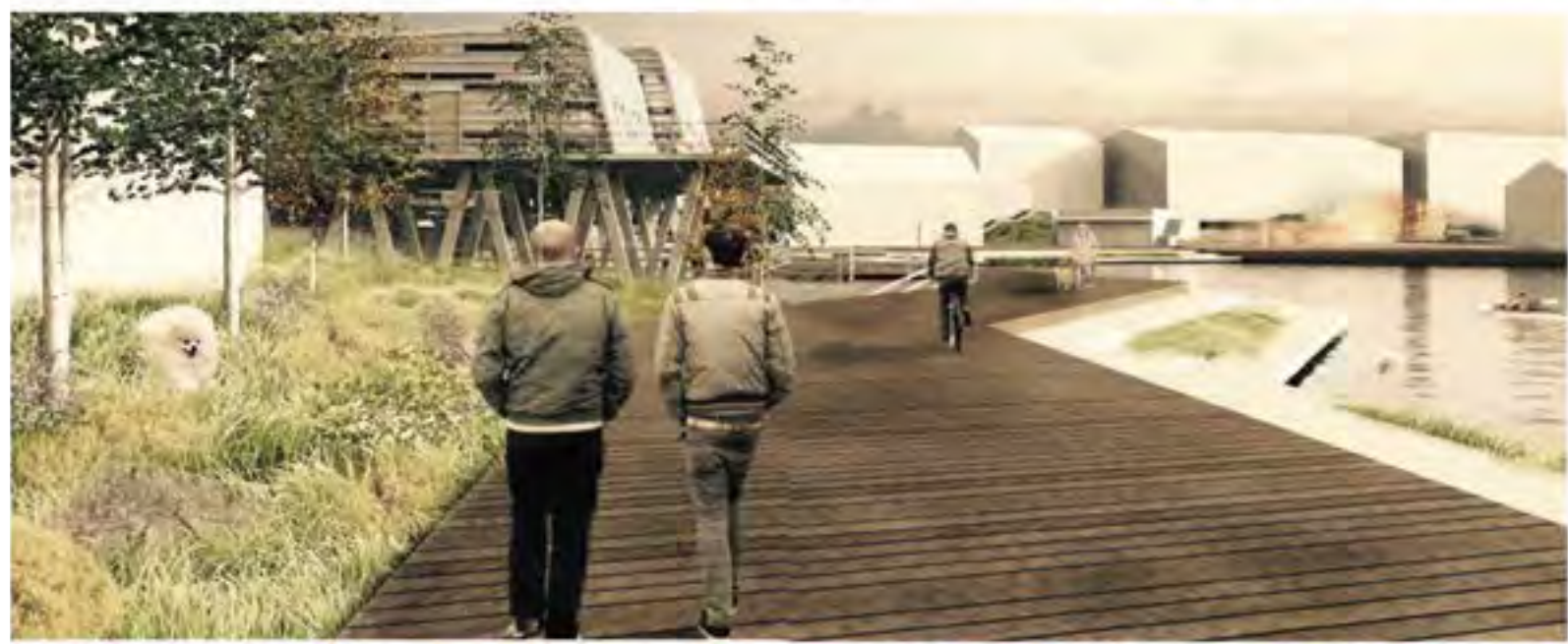
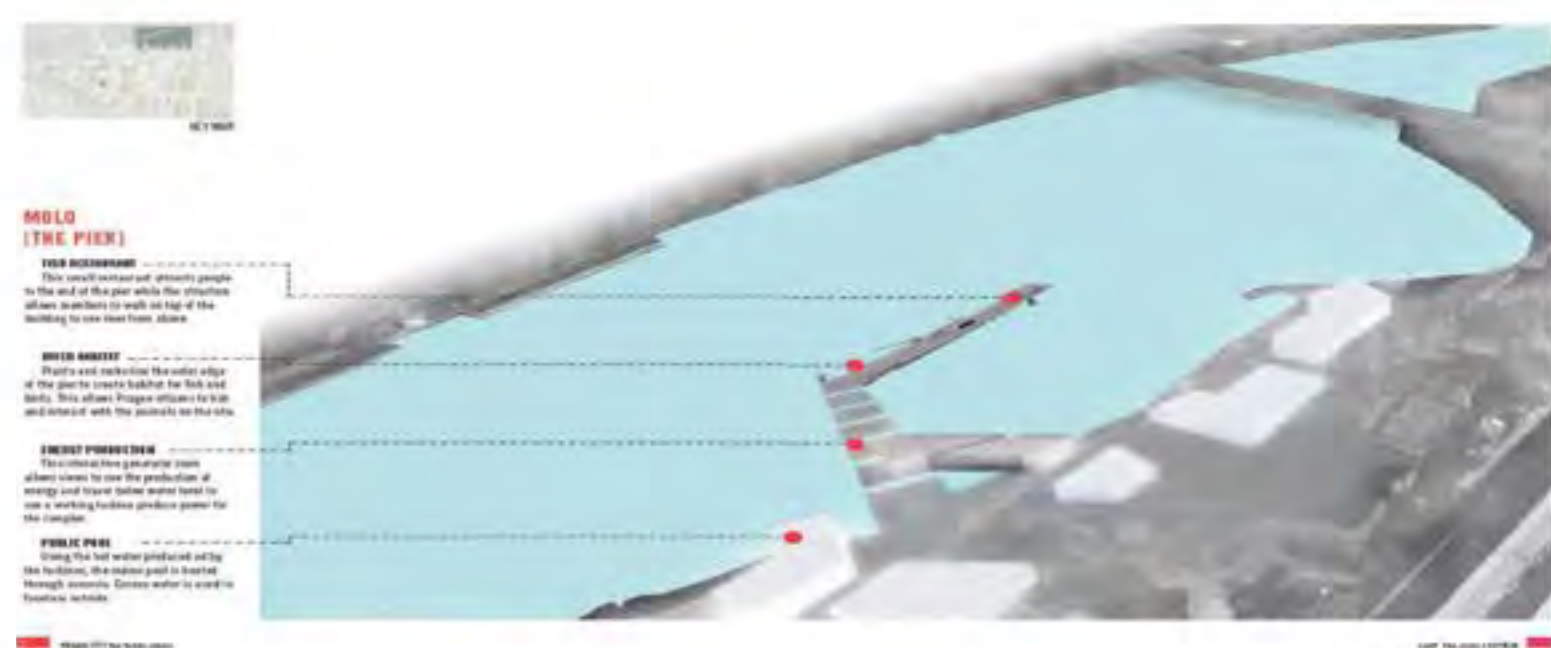


PRAHA 7 / 2015

Fall semester of 2015, we offered a vertical, interdisciplinary and international studio integrated into the core design curricula of three universities: the Architectural Institute in Prague, Bilkent University in Turkey and the University of Arizona. Wethen developed highly selected teams of students to participate in an urban design studio in Prague. The project focused on the redevelopment of the post industrial urban water front of District Seven in Prague. This project seems to have catalyzed a better understanding of the potential influences and confines inherent in our design and planning professions regarding their ability to effect meaningful change in urban fabric. Cultural and professional commonalities also emerged and became apparent to all participants.







AL HAMRIYA / OMAN:

During Fall semester 2014, CAPLA offered a vertical, interdisciplinary and international studio integrated into the core curricula of our three schools. We developed an interdisciplinary team to participate in an urban design studio / practicum in Oman in collaboration with the planning offices of the Muscat Municipality. Their Director and Mayor of Muscat, Sultan bin Hamdoon Al Harthi, invited us to participate in the urban revitalization master planning of the Al Hamriya District of Muscat. The basic pedagogical intent of the program was to enhance cross-cultural and cross-disciplinary awareness, collaboration and learning in the students and faculty of Architecture, Landscape Architecture, and Planning in both the University of Arizona and the Sultan Qaboos University. We trust that the processes employed and the community development solutions generated during this complex and multi-layered project will eventually gain relevance and bear witness in subsequent research and professional work of all student and faculty participants. Although cultural and political schisms are at times all too apparent, students and faculty in the allied design and planning professions do in fact share many common goals. And, we chose to focus this studio experience on perhaps the most important of these objectives: that of creating and revitalizing urban fabric envisioned and developed across a range of interrelated variables that are also their own measures of sustainability. Although we remain apprehensive regarding the use of the term “sustainability”, we do honor it as an elusive yet worthy goal integrated into all of our planning and design efforts. We believe that a truly sustainable urban environment must necessarily be defined across an array of dimensions: economic, cultural, environmental, functional, and aesthetic.





MASTER PLAN DESIGN



DESIGN



MOUNTAIN PARK

STREET EDGE



PEDESTRIAN UNDERPASS

STREET EDGE



DESIGN STRATEGIES

STREET EDGE



EL CORAZON / TUCSON:

The spring semester 2013, Pima County, Arizona gave us the opportunity to participate in a wonderful project in Tucson along the Santa Cruz river corridor. The site north of Grant Rd. and south of Ina Rd., presented our design team an array of critical environmental and social issues with which to contend, i.e., uncontrolled growth, economic stagnation, transportation inefficiencies, a dearth of healthy natural habitat and recreational opportunities, environmental degradation, as well as diminishing sense of place. Consequently, the overarching intent of this project focused on the development of a sustainable urban living prototype for Tucson. A prototype that approaches sustainability across an array of dimensions: economic, environmental, cultural, aesthetic, and functional. Our master plan strives to encourage intelligent nodal development along the Santa Cruz river corridor in which dense, walkable mixed-use nodes are combined with strategically placed conservation easements that preserve, revitalize and interconnect the many unrealized/underutilized natural, cultural and economic amenities existing throughout the area. This was accomplished by graduate students in Landscape Architecture.



Mixed Use High Density - South



This perspective illustrates the relationship between the new development and the existing urban fabric. The design is integrated into the existing urban fabric, with the new development building and existing buildings in a way that is both respectful and responsive to the existing urban fabric.

In addition to the design, the design team has also focused on the design of the public spaces. The design team has created a series of public spaces that are both functional and aesthetically pleasing. These spaces are designed to be both functional and aesthetically pleasing, and they are designed to be both functional and aesthetically pleasing.



EL CORAZÓN CENTRAL | DESIGN

EL CORAZÓN CENTRAL | DESIGN

Mixed Use High Density - North



This perspective illustrates the relationship between the new development and the existing urban fabric. The design is integrated into the existing urban fabric, with the new development building and existing buildings in a way that is both respectful and responsive to the existing urban fabric.

In addition to the design, the design team has also focused on the design of the public spaces. The design team has created a series of public spaces that are both functional and aesthetically pleasing. These spaces are designed to be both functional and aesthetically pleasing, and they are designed to be both functional and aesthetically pleasing.



EL CORAZÓN CENTRAL | DESIGN

EL CORAZÓN CENTRAL | DESIGN

Transit Stop and Path



This perspective illustrates the relationship between the new development and the existing urban fabric. The design is integrated into the existing urban fabric, with the new development building and existing buildings in a way that is both respectful and responsive to the existing urban fabric.

In addition to the design, the design team has also focused on the design of the public spaces. The design team has created a series of public spaces that are both functional and aesthetically pleasing. These spaces are designed to be both functional and aesthetically pleasing, and they are designed to be both functional and aesthetically pleasing.



EL CORAZÓN CENTRAL | DESIGN

EL CORAZÓN CENTRAL | DESIGN

The Boulevard



This perspective illustrates the relationship between the new development and the existing urban fabric. The design is integrated into the existing urban fabric, with the new development building and existing buildings in a way that is both respectful and responsive to the existing urban fabric.

In addition to the design, the design team has also focused on the design of the public spaces. The design team has created a series of public spaces that are both functional and aesthetically pleasing. These spaces are designed to be both functional and aesthetically pleasing, and they are designed to be both functional and aesthetically pleasing.



EL CORAZÓN CENTRAL | DESIGN

EL CORAZÓN CENTRAL | DESIGN

The Plaza



This perspective illustrates the relationship between the new development and the existing urban fabric. The design is integrated into the existing urban fabric, with the new development building and existing buildings in a way that is both respectful and responsive to the existing urban fabric.

In addition to the design, the design team has also focused on the design of the public spaces. The design team has created a series of public spaces that are both functional and aesthetically pleasing. These spaces are designed to be both functional and aesthetically pleasing, and they are designed to be both functional and aesthetically pleasing.



EL CORAZÓN CENTRAL | DESIGN

EL CORAZÓN CENTRAL | DESIGN

Ina Mixed Use Center



This perspective illustrates the relationship between the new development and the existing urban fabric. The design is integrated into the existing urban fabric, with the new development building and existing buildings in a way that is both respectful and responsive to the existing urban fabric.

In addition to the design, the design team has also focused on the design of the public spaces. The design team has created a series of public spaces that are both functional and aesthetically pleasing. These spaces are designed to be both functional and aesthetically pleasing, and they are designed to be both functional and aesthetically pleasing.



EL CORAZÓN NORTE | DESIGN

EL CORAZÓN NORTE | DESIGN

Eco Resort and Sunset Canyon EL CORAZÓN NORTE I. DESIGN



The purpose of the proposed eco resort is to enhance the urban environment and create a new urban fabric. The resort will be a sustainable and eco-friendly development that will provide a new urban fabric and a new urban fabric. The resort will be a sustainable and eco-friendly development that will provide a new urban fabric and a new urban fabric.



EL CORAZÓN NORTE I. DESIGN

AVENIDA CENTRAL / Panama City, Panama:

In the summer of 2011, the Tejido Group from the University of Arizona gathered a group of volunteer students from both the Architecture and Landscape Architecture programs to develop conceptual design solutions along a pedestrian corridor in Panama City. The project illustrated a collaborative effort between the students from the University of Arizona and students from la Universidad de Panama as both groups worked together to create a revitalization master plan for Avenida Central, supplemented with connective strategies and circulatory corridors. With strong support from the governor's office, the students, professors, and all others involved experienced some unique design challenges resulting in experiences which fostered both academic and cultural growth. This revitalization project of Avenida Central has evolved into an attempt to develop a "sustainable urban living" prototype that may also have relevance to other distressed neighborhoods in this rapidly growing urban environment.

Eco-Resort and Sunset Canyon EL CORAZÓN NORTE I. DESIGN



The purpose of the proposed eco resort is to enhance the urban environment and create a new urban fabric. The resort will be a sustainable and eco-friendly development that will provide a new urban fabric and a new urban fabric. The resort will be a sustainable and eco-friendly development that will provide a new urban fabric and a new urban fabric.



EL CORAZÓN NORTE I. DESIGN



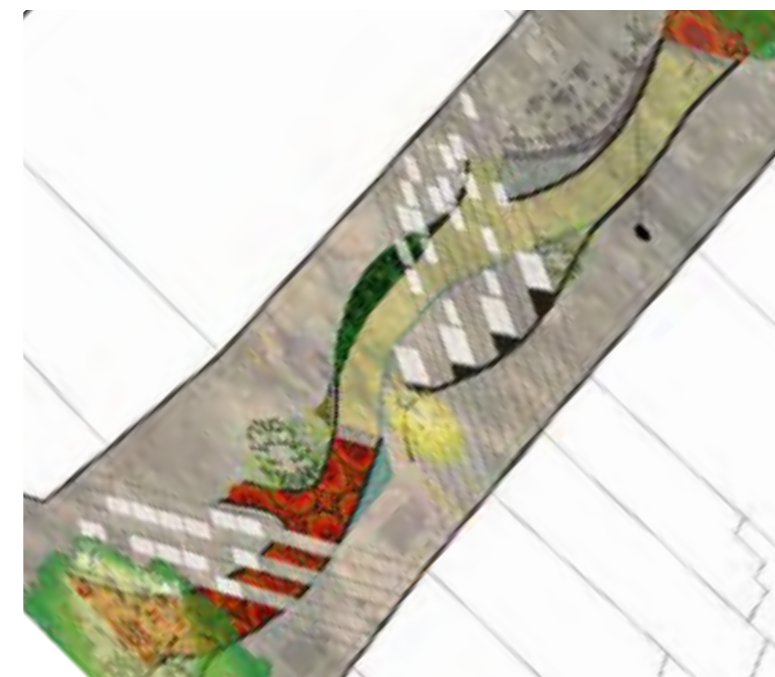
Ina Preservation Park EL CORAZÓN NORTE I. DESIGN

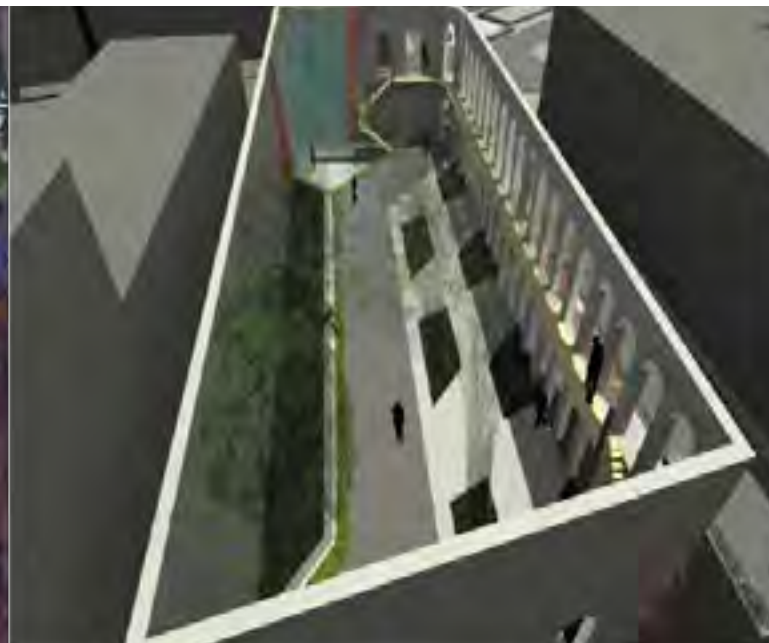
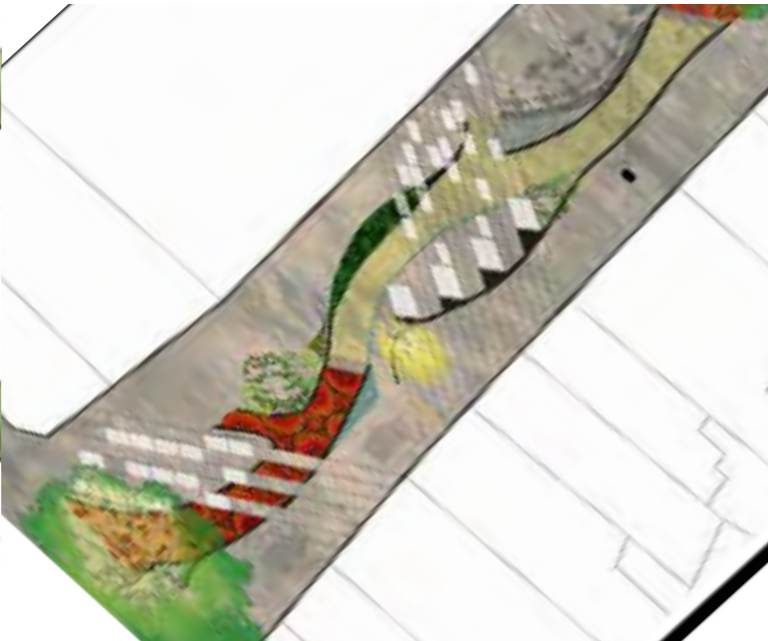


The purpose of the proposed eco resort is to enhance the urban environment and create a new urban fabric. The resort will be a sustainable and eco-friendly development that will provide a new urban fabric and a new urban fabric. The resort will be a sustainable and eco-friendly development that will provide a new urban fabric and a new urban fabric.



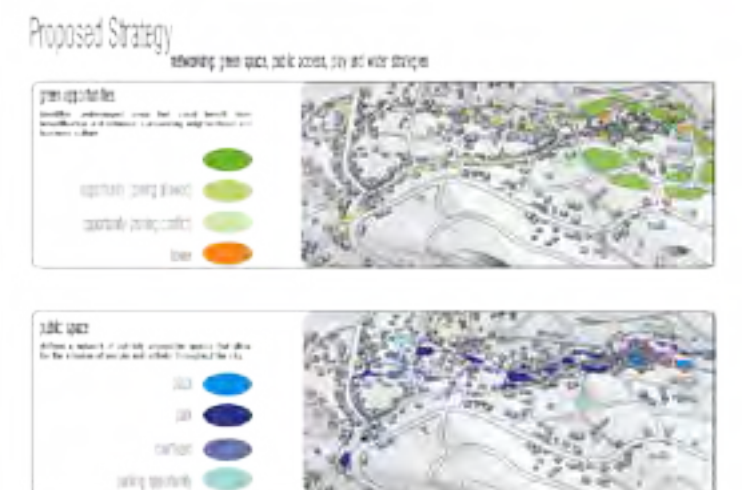
EL CORAZÓN NORTE I. DESIGN





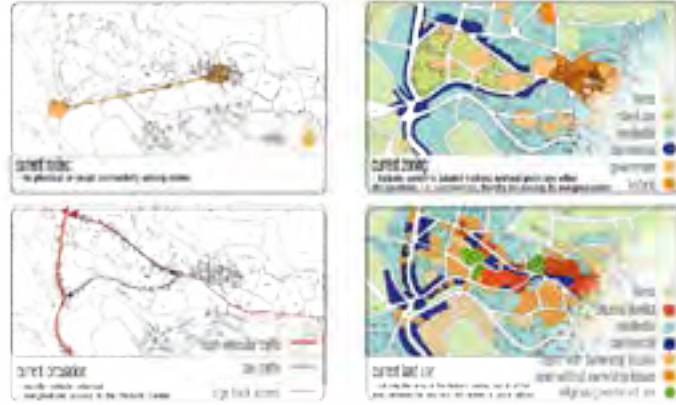


During the summer of 2010 the Tejido Group from the University of Arizona assembled a group of volunteer students from the University's College of Architecture and Landscape Architecture to collaborate on a series of projects in Palestine with RIWAQ / Centre for Architectural Conservation. The two groups focused on developing urban revitalization and connectivity strategies for historic Birzeit near Ramallah, Palestine. It was a wonderful experience for all involved. We grew in many unanticipated ways, both personally and professionally. As a consequence, the relationship between Tejido and RIWAQ will continue to flourish in the foreseeable future. The following is a brief summary of the design and planning outcome of this year's collaborative effort in Birzeit. The vision set forth in the following pages, is a result of the collaborative effort among faculty and students of the University of Arizona / College of Architecture and Landscape Architecture / Tejido Group and the RIWAQ Centre for Architectural Conservation in Palestine. The Tejido Group and RIWAQ have a long-standing relationship which provided the opportunity for our group of architectural students to come and take part in one of RIWAQ's most challenging design projects. The goal was to build off of previous RIWAQ research and through a fresh perspective, generate community revitalization and development concepts that could be coalesced into relevant master planning and design options for historic Birzeit and the surrounding Birzeit urban fabric. RIWAQ and the Birzeit project received an Aga Khan Award / 2013.



Existing Conditions

nodes, circulation, land use, zoning



Existing Conditions

overall condition of the city

Node Separation

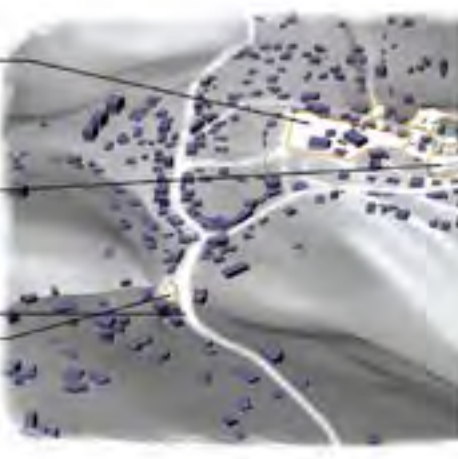


New City Center



Proposed Strategic Plan

overall condition of the city



05 Old City Network

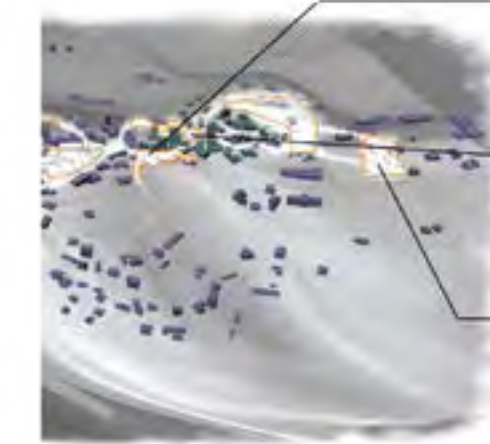
plan network



The proposal is to create a series of nodes that connect the city and the world. The nodes are the physical and visual connectivity among nodes. The nodes are the physical and visual connectivity among nodes. The nodes are the physical and visual connectivity among nodes.

Proposed Strategy

nodes, circulation, land use, zoning

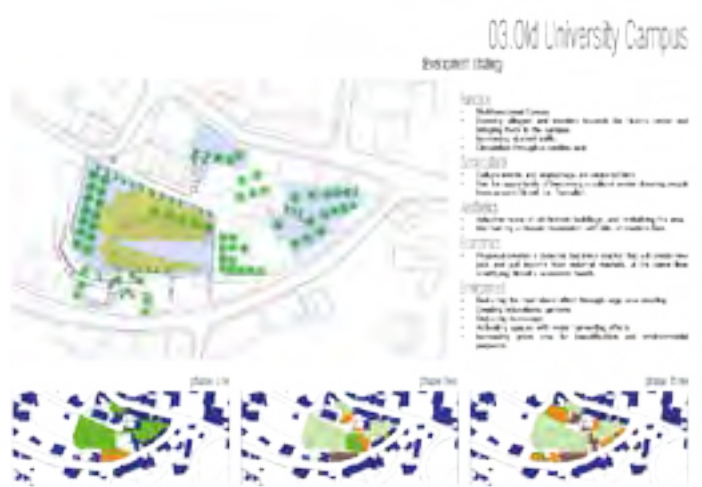


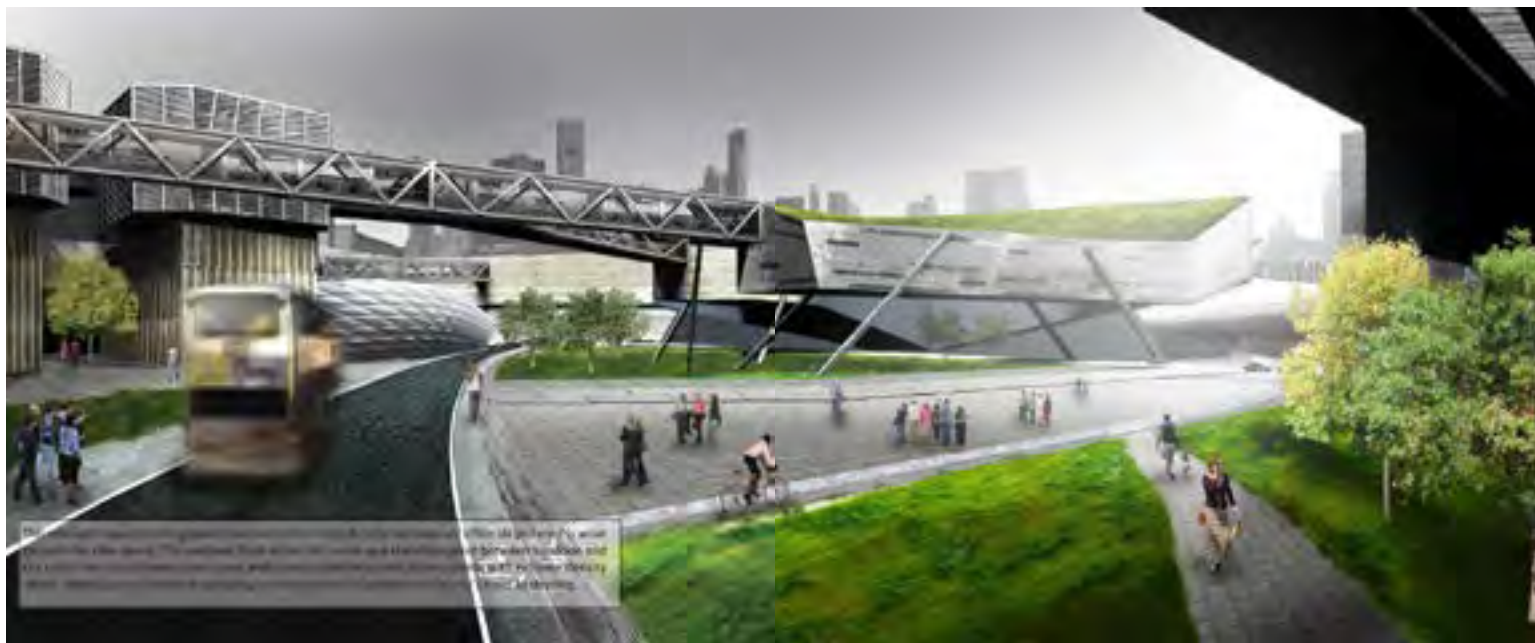
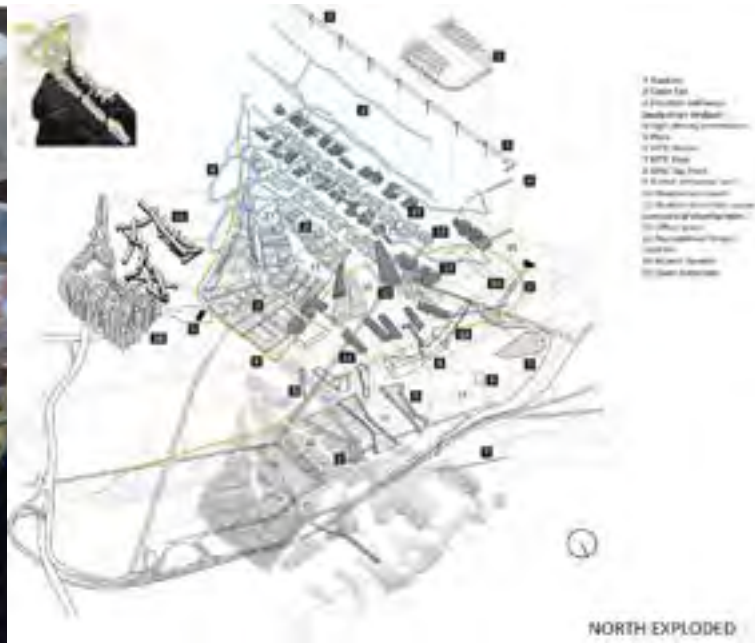
Operable windows and cross ventilation strategies are utilized to keep cool and eliminate the need for central air conditioning. The visual condition is also provided by proximity to trees that create a cooler microclimate. Level changes and shared courtyards reference the traditional building style, and more spaces are created for spontaneous social interaction.



KAI TAK / HONG KONG:

In the summer of 2013, the Tejido Group from the University of Arizona / CAPLA assembled a group of volunteer students from both Schools of Architecture and Landscape Architecture to develop an urban redevelopment master plan for the former International airport of Hong Kong - KAI TAK in East Kowloon Harbor. The project illustrated a collaborative and interdisciplinary effort among our faculty and students from the University of Arizona. Our design team was graciously hosted by the Chinese University of Hong Kong throughout the four week duration of the project. CUHK faculty and students assisted us greatly in adapting to, and in better understanding the many complex social, economic and environmental issues confronting us in this fascinating project. With strong support from CUHK and their School of Architecture, the students, professors, and all others involved experienced unique design challenges resulting in experiences which fostered both academic and personal growth. This urban redevelopment project for KAI TAK has evolved into an attempt to develop a multipronged approach to the revitalization and conservation of the wonderfully complex urban and natural environment in need of open space, environmental remediation and an array of urban functions - housing, commercial and recreational. We sincerely hope that this “sustainable urban development prototype” may assist the East Kowloon area of Hong Kong in it’s revitalization efforts. The area has immense potential.





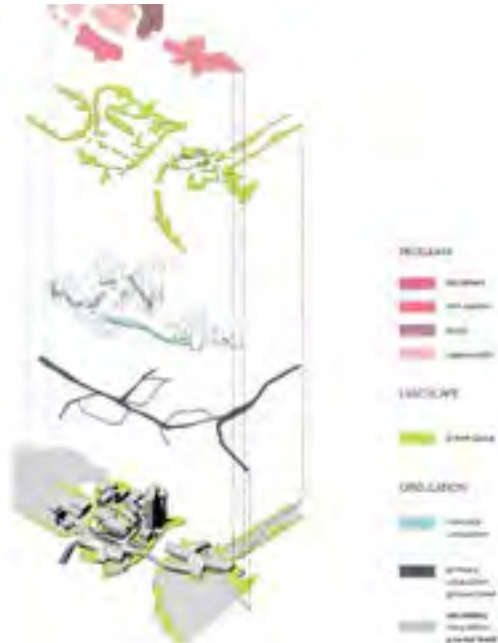
AQUARIUM



The programmatic addition of an aquarium to Kai-Fai is designed to serve as an existing attraction and as a point of architecture for Hong Kong. Attracting tourists and locals alike, it generates a large source of revenue for the city. The revenue capitalizes from the revenue as well as the restoration of this local ecosystem.

Bioremediation:
A channel divides the aquarium into a North and South wings, each housing two main - the freshwater/saltwater corridor and the open harbor. The north basin on the harbor while the south accommodates the regeneration of freshwater and saltwater along the channels and coves that rehabilitate mangrove ecosystems.

Spine:
The aquarium is an attraction that generates large amounts of revenue. Its proposed accessibility via MTR and cable car would maximize its economic value. The programmatic events that surround the aquarium such as the mall and hotel also generate revenue.



TAI-O / LANTAU:

In the summer of 2013, the Tejido Group from the University of Arizona / CAPLA assembled a group of volunteer students from both Schools of Architecture and Landscape Architecture to develop a revitalization master plan for one of the last remaining fishing villages in the Hong Kong territories – TAI-O on Lantau Island. The project illustrated a collaborative and interdisciplinary effort among our faculty and students from the University of Arizona. Our design team was graciously hosted by the Chinese University of Hong Kong throughout the four week duration of the project. CUHK faculty and students assisted us greatly in adapting to, and in better understanding the many complex social, economic and environmental issues confronting us in this fascinating project. With strong support from CUHK and their School of Architecture, the students, professors, and all others involved experienced unique design challenges resulting in experiences which fostered both academic and personal growth. This revitalization project of TAI-O has evolved into an attempt to develop a multipronged approach to the revitalization and conservation of the wonderfully complex social and environmental context which is TAI-O. We sincerely hope that this “sustainable rural development prototype” may assist TAI-O in revitalizing a threatened, yet truly unique and relevant lifestyle. With very special thanks to CUHK and our gracious host Patrick Hwang we offer the following as a brief summary of the design and planning outcomes resulting from this summer’s three week charrette in Hong Kong.



North

This edge condition with broader Kowloon serves as a high-traffic activity center characterized by a network of open spaces that blurs the site boundary by bridging the site connecting to the city in multiple ways.

Runway

The runway brings a lively new economic and social outlet that provides locals with much more centralized businesses, jobs, shopping districts, and open spaces. The runway is divided into three islands that have different functions but are woven together by a continuous urban path that runs along the stretch of the runway.

East

This waterfront region becomes the venue over which East Kowloon's emerging artistic and entrepreneurial culture is manifested. It will unfold as another destination in Hong Kong's nightlife and entertainment culture. The highway-lined waterfront becomes a vibrant hub of culture.



EXISTING LAND USE

Much of the land surrounding the village of Tai O is already protected and not slated for development. Any future development within the historic village is also strictly limited, either times not allowing houses that have been destroyed to be rebuilt.



CIRCULATION

Circulation within the village is good, if not somewhat limited by the shape of the development and the water that surrounds most of it. Circulation is most limited in the access to the village from the outside, with the only main circulation paths being one road from the rest of Lantau and one ferry entrance at the port.



AMENITIES

There are amenities for the residents of the village, but they are often not placed with regard to the limited mobility of the mostly aging population of the village. Amenities tend to be concentrated in the newer developments, presumably because they are more easily located there in the existing village fabric.



ENTRANCE AND COMMERCIAL ZONE

Tai O is a picturesque fishing village that's facing several challenges. It's fishing industry has been fading off as the young people are turning away from it, leaving behind a physically demanding career. To them, some opportunities in urban living exist. The village is also gaining attention as a possible ecotourism destination. With this in mind, the design team determined that enhancing the fishing industry was important for integrity and relevance, but ecotourism should also be a target.

Over coastal design issue was the purely functional but uninteresting entry sequence for visitors to Tai O. The bus depot dominated the entry plaza and there was no striking sense of arrival. Also the seawall and drainage river between the old village and new high-rise housing created a barrier, both physically and visually. The wall is so close to the old village buildings that it inhibits expansion and personal gardens and outdoor open space.



WEST SIDE INFILL STRATEGIES

As you enter through the busy commercial center the historic pit house community that is centrally located in the heart of Tai O has a charming quality that is rich with authenticity, but not seem very congested, disorganized and lacks a direct connection to the waterfront. By breaking up the historic fabric to create boardwalks and courtyards, the design proposes a green network that allows for better access to and through the old historic town.

The pocket park is also connected to the tourist boardwalk, which gives opportunities for social interaction.



CULTURAL

Provides community spaces that are comfortable for locals and visitors year-round.

Green space that provides an unobstructed view to the ocean which also creates a direct connection with visitors being transported via boat.

Instead of having a large central park, small pocket parks were provided to recreate the natural habits of the people of Tai O, such as gathering in small groups and enjoying a game of mahjong. These pocket parks allow for small groups to get together and experience a moment of quiet practice.

FUNCTIONAL

Open space to be shared mostly by local people that live attached to or near the pocket park for recreational activities.

The pocket park is also connected to the tourist boardwalk, which also offers opportunities for social interaction.

ENVIRONMENTAL

Improve park life for the residents of Tai O, who do not have much in the way of private green spaces or parks.

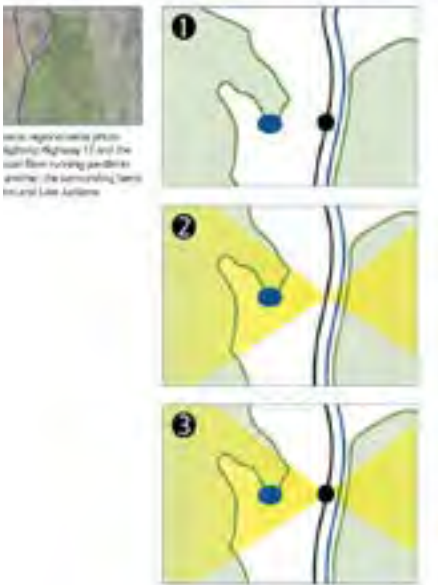




FRONTERAS / MEXICO:

Roberto Valenzuela in the Spring of 2008, approached the Tejido Group to develop a revitalization plan for Fronteras, Sonora, Mexico that would inspire economic stimulus as well as a plan for the anticipated future expansion of the town. The Valenzuelas articulated their vision of an enlivened Fronteras benefiting from the development of “diversified, grass roots enterprises” and an investment in infrastructure to support public health, light industrial and residential development. The Valenzuelas have since expanded their business to include eco-tourism adventures in the mountains that surround their ranch. Unfortunately, the culturally and historically vibrant town of Fronteras has not fared as well. Due to the closing of a local manufacturing facility in 2002, most jobs were lost. The lack of employment opportunities in Fronteras has forced many people to leave in search of work elsewhere. Despite the economic circumstances of the town, it is rich in cultural and natural resources which can serve as opportunities for economic stimulation. The town’s proximity to the Douglas, Arizona border to the north, the Sierra Madre mountain range to the east and west and its rich cultural history are all assets that could serve as a draw for tourism and investors. Community members have a vision for Fronteras, one with a healthier, more diversified economy for the town. A healthy economy will enable the children of Fronteras to remain if they choose and to raise their families in their hometown, secure in knowledge that there will be job opportunities for their children. Our clients envision a future full of growth and opportunity for the community. As Fronteras looks forward to a brighter future, having a master planning document to guide its development and growth has the potential to be a vital asset, particularly for attracting investment. This master planning document is intended to identify ways in which the town could be revitalized and to provide a basic road map for growth. It is important to note that this is a conceptual plan meant to stimulate discussion, begin the idea generation process and serve as a communication tool.

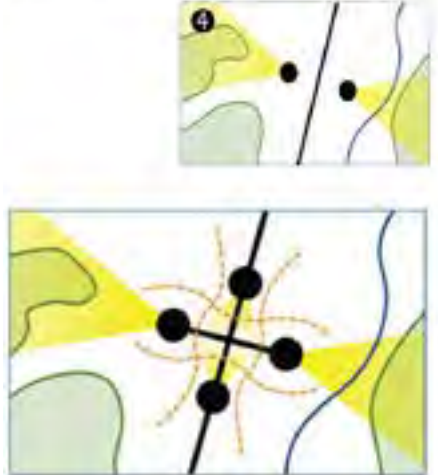
CONCEPT DEVELOPMENT | REGIONAL SCALE DIAGRAMS



CONCEPT DEVELOPMENT | LOCAL SCALE DIAGRAMS



CONCEPT DEVELOPMENT | FINAL SYNTHESIS DIAGRAM





GENERAL IGNACIO ZARAGOZA PROMENADE

The main promenade is the main and central axis of the town, and the adjacent spaces are the focus of the town. The redesign of the promenade will bring more greenery and open spaces to the town, and will also bring more greenery and open spaces to the town.



As an effort to create a more vibrant town, the redesign of the promenade will bring more greenery and open spaces to the town, and will also bring more greenery and open spaces to the town.

But the events will also bring more greenery and open spaces to the town, and will also bring more greenery and open spaces to the town.

DESIGN 131



The primary design goal is to create a more vibrant town, and the redesign of the promenade will bring more greenery and open spaces to the town, and will also bring more greenery and open spaces to the town.



Living areas are designed to accommodate a variety of uses and activities, from people watching and social performance, to private conversation and outdoor action. They are also designed to provide a sense of community and social interaction.

The redesign of the promenade will bring more greenery and open spaces to the town, and will also bring more greenery and open spaces to the town.



PLAZA

In Mexico, plazas are a common feature of the town, and they are often the center of the town. The redesign of the plaza will bring more greenery and open spaces to the town, and will also bring more greenery and open spaces to the town.

The primary design goal is to create a more vibrant town, and the redesign of the plaza will bring more greenery and open spaces to the town, and will also bring more greenery and open spaces to the town.



DESIGN 132



PLACITAS

The primary design goal is to create a more vibrant town, and the redesign of the placitas will bring more greenery and open spaces to the town, and will also bring more greenery and open spaces to the town.

By creating a more vibrant town, the redesign of the placitas will bring more greenery and open spaces to the town, and will also bring more greenery and open spaces to the town.



The primary design goal is to create a more vibrant town, and the redesign of the placitas will bring more greenery and open spaces to the town, and will also bring more greenery and open spaces to the town.



The primary design goal is to create a more vibrant town, and the redesign of the placitas will bring more greenery and open spaces to the town, and will also bring more greenery and open spaces to the town.

DESIGN 133

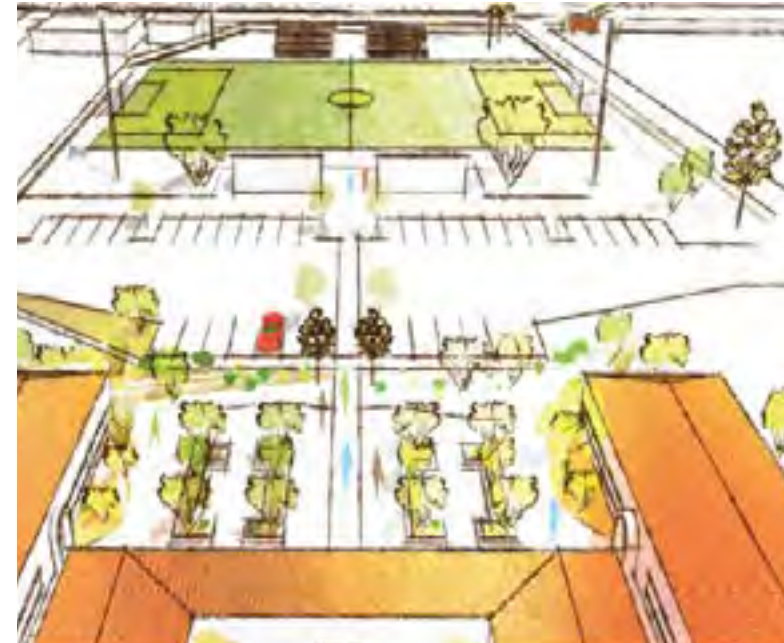
DESIGN 134



EDUCATIONAL DISTRICT

The primary design goal is to create a more vibrant town, and the redesign of the educational district will bring more greenery and open spaces to the town, and will also bring more greenery and open spaces to the town.

The primary design goal is to create a more vibrant town, and the redesign of the educational district will bring more greenery and open spaces to the town, and will also bring more greenery and open spaces to the town.

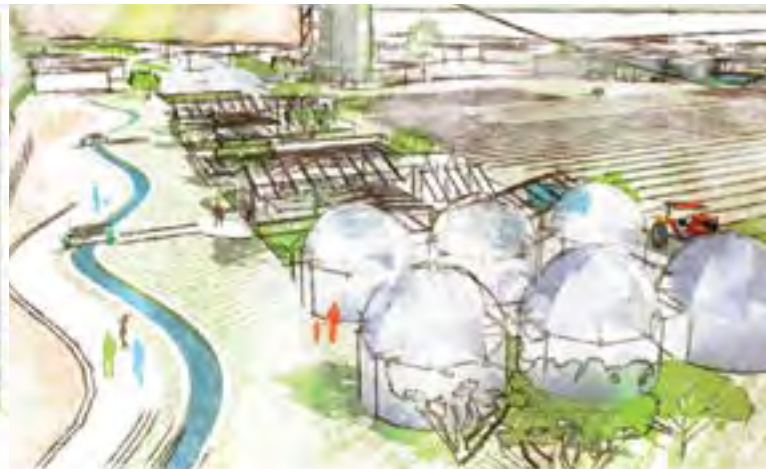


DESIGN 135



GREEN HEART

Central to the revitalization of Porterville is the development of the Green Heart. The Green Heart occupies the historic agricultural fields between the streets Plumas, Elm, Tulles and Ave. C (Sancti Spiritus). Within the area is a variety of benefits including their ability to increase the city's food security, reduce the city's carbon footprint, and provide a place for the community to connect with nature. The Green Heart is located at the western edge of the residential street Sancti Spiritus (C) and the intersection of the historic agricultural fields. The Green Heart is a large public space on a former agricultural field. The facility includes the proposed Plumas Farm Sustainable Community Development (see Appendix B) as well as a community center, Alternative Agricultural Learning Center, and urban vegetable garden.



The Greenbelt supports a range of innovative agricultural pro-



HOMESTAYS

"Homesick" is a story of a teacher that brings readers across a world at the heart of a local town, rather than a commercial model. Homesick enables readers to earn money from within their own communities. The form of homesick also creates a sense of connection between the city of population and foreign countries. While readers are encouraged to (re)discover the world beyond the borders of their own country, the novel's language and structure also encourage readers to think about the world in a new way. The novel's language and structure also encourage readers to think about the world in a new way. The novel's language and structure also encourage readers to think about the world in a new way.

Exemplar Museum, Fort Lauderdale, Florida.

<https://www.karger.com/ArticleFullText/524784>

From

Project Name: Project Number:

Philip, Charles, Hugh, and Thomas (2010). *Orthodox Education: Transforming Faithful Learning*. Grand Rapids, MI: Eerdmans.



The sparse vegetation lower than 1 m likely shows experimental agricultural fields. This cover may be seen from the southwest.

The negative-ion features a spine that is not only a component of the agricultural machinery, but also an integral part of the system. Although the negative-ion spine is not a work climbing-up the spine, it is a jumping from the spine.



GERONIMO'S CAVE



A local park in the Italian neighborhood can act as a gathering space and recreation area for residents on the west side of town.



The O-Danien path may also serve as a gateway to a rail system along the coast to the west, as well as, the future German rail line.



RESIDENTIAL INFILL

The Institute for Sustainable Communities Development focuses on emerging technologies in architecture, landscape architecture, and urban design including solar and wind technologies, and more. The focus of Institute will be the primary sustainability of the moment, through the design and construction of innovative and sustainable houses that increase UTO principles.

WEE refers to the issue of land or space within a built environment, in a form of indigenous and contemporary of growth within a town or city zone. The goal is to present agriculture and rural areas and rural areas, emphasizing collecting existing a tradition that is dependent on agriculture.

The recommended daily oral antibiotic (400 mg) includes 100 mg every 4 hours. Please to Chlor-Lipids, and closely to the use and control the symptoms. These should not likely be interrupted until the symptoms, along with the patient's condition, are under control.



EQUESTRIAN CENTER

Multiple providers offer a total visit. Richard L. Rodriguez, emphasizing a central aspect of aquaponics, must convert the knowledge along the route to the Green House and beyond. An aquaponics center, including studies, research, education, and a growing can be utilized by visiting home owners and will also provide constant help to be needed town and island groups.

Along the right side of the river, a gently sloping river terrace is along the bank to the river. The surrounding area is mostly just the edge of a wilderness, half made up of the remains of a rocky canyon, and half made up of a river terrace and a river terrace. The river terrace is a gently sloping river terrace, and the river terrace is a gently sloping river terrace. The river terrace is a gently sloping river terrace, and the river terrace is a gently sloping river terrace.

Address only. We will ignore mail that is payable by return delivery mail (for use as the envelope). In order to make a useful link between names and dates, signatures must not be predated by a month or more (only if the month, day, or year is not a holiday, weekend, or holiday).





LIGHT INDUSTRIAL PARK

Light industrial development is designed for the area north of the Peninsula City Center. Industry will include plastics recycling, assembling of battery cabinets, and other manufacturing of materials for reuse. The entry to this industrial park will include a gas station, convenience store, and gas pump.



THE DESIGN

