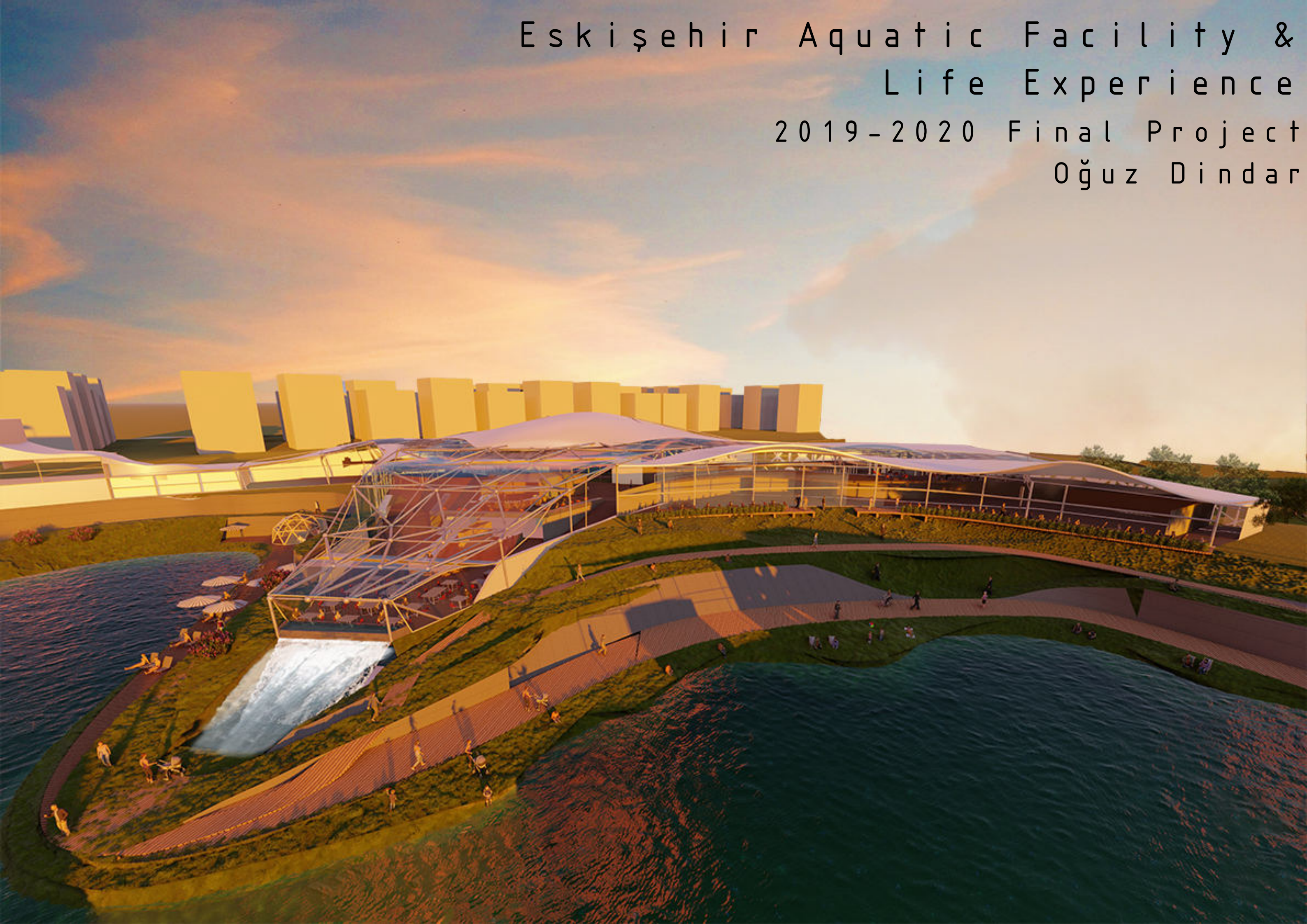
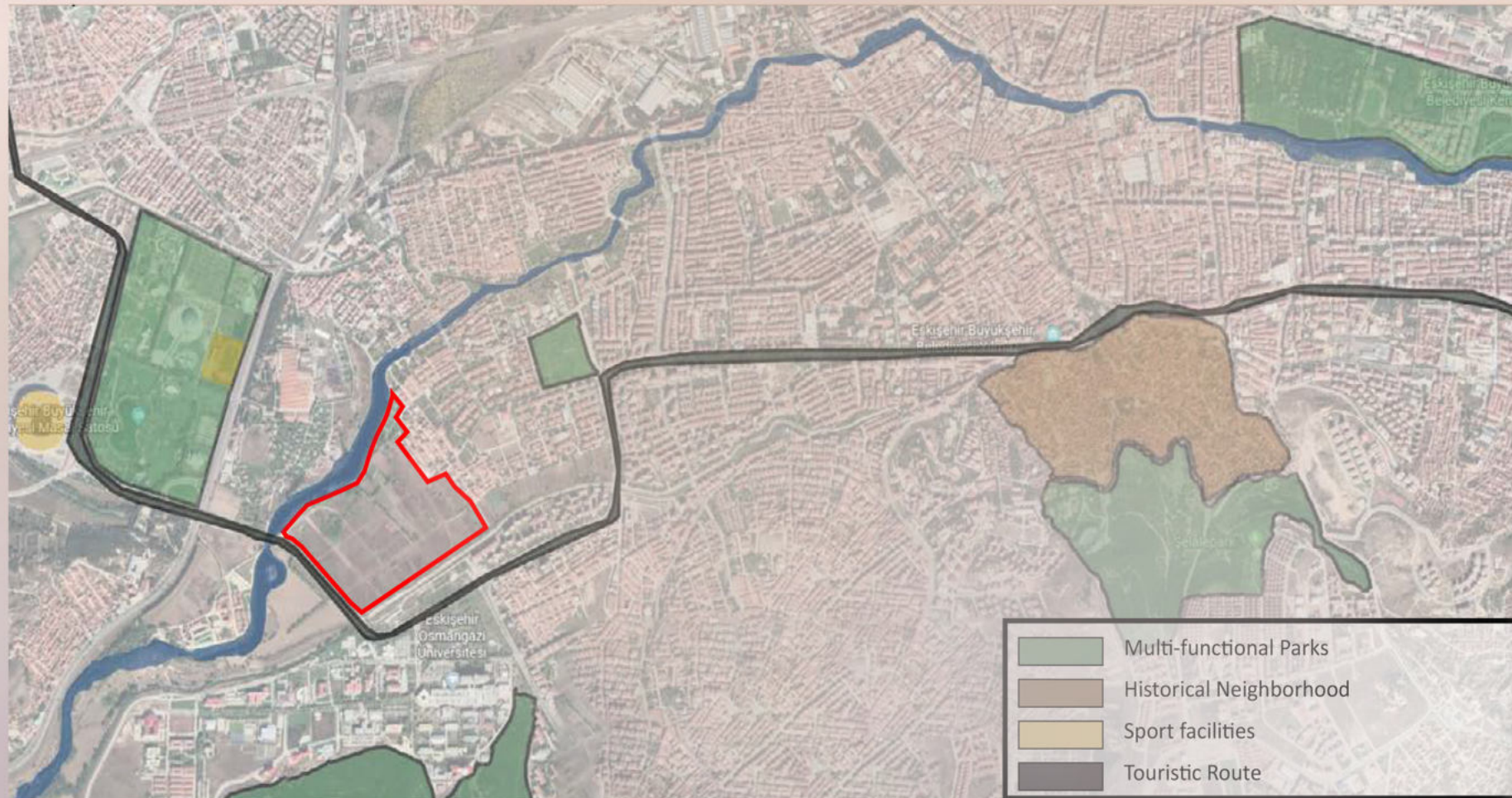


Eskişehir Aquatic Facility &  
Life Experience  
2019-2020 Final Project  
Oğuz Dindar



Eskişehir locates in between metropolys such as İstanbul, Ankara, Bursa and the city is not a metropol city that the population is araound 1 million. The main economic resources of the city are tourism and education.

One of the most important feature of the site that it is located on a touristical route.

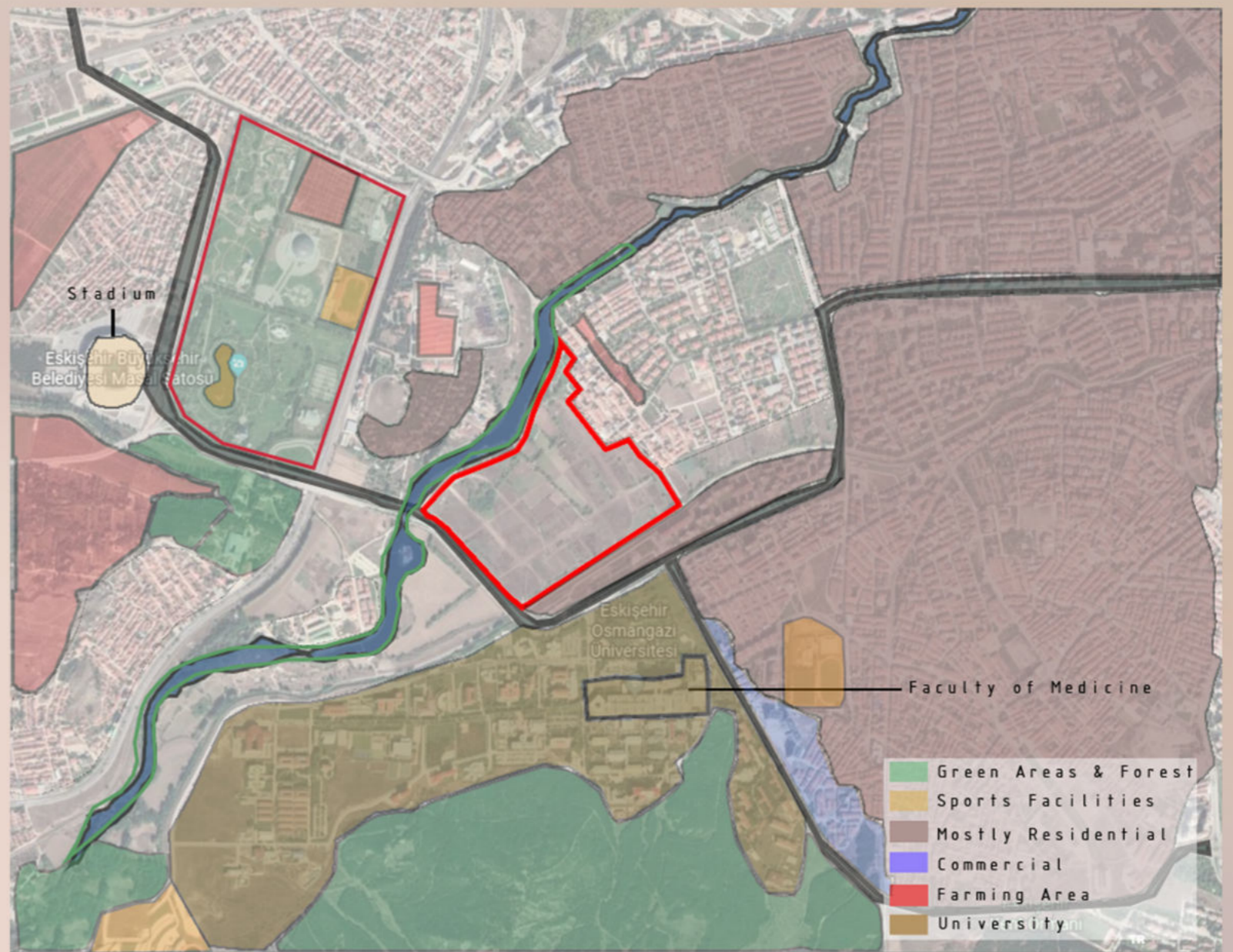
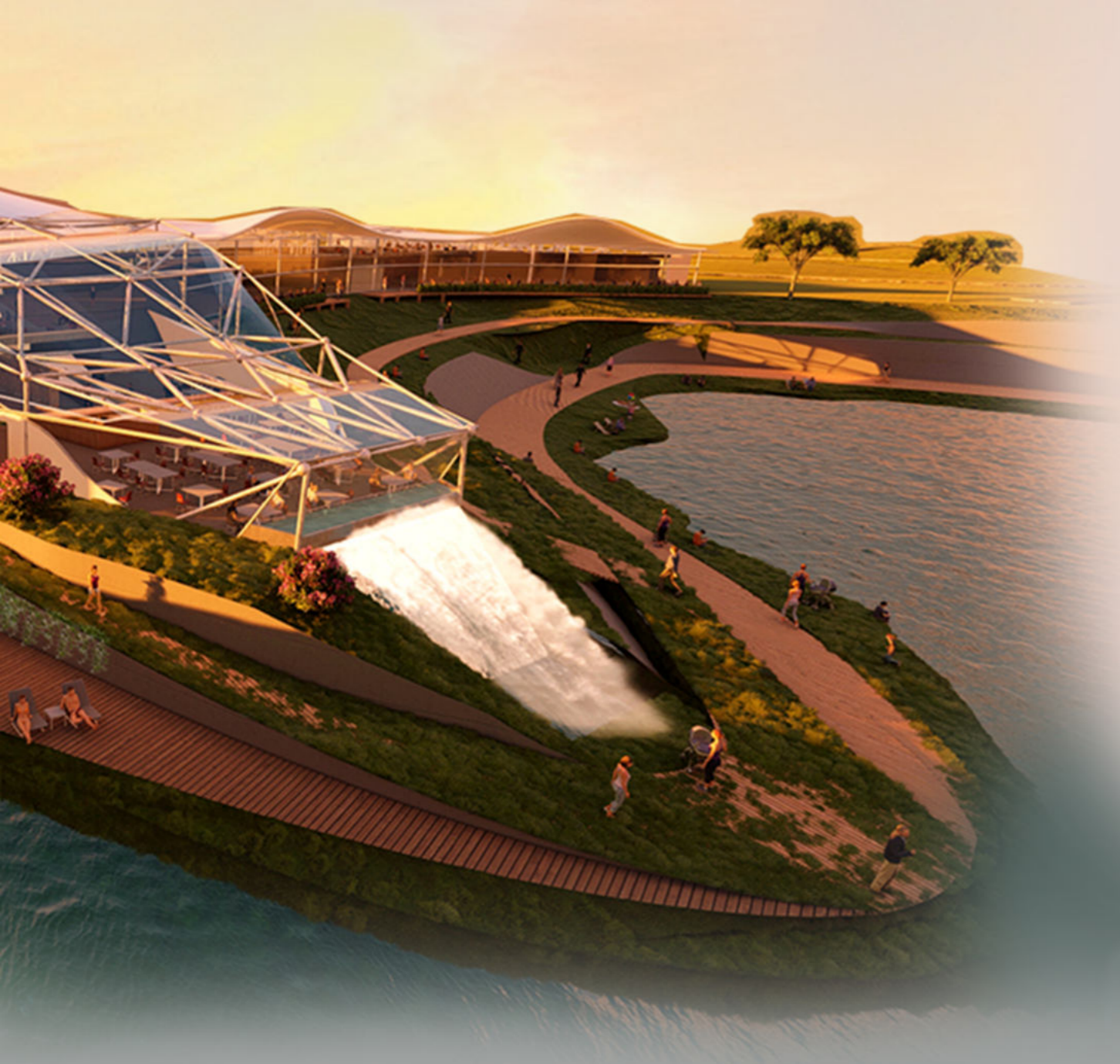


The route starts and ends which includes science and Odunpazarı Houses which is includes mainly housing, r visited by tourists and lo to be design in the site f they are local or tourist needs of locals.



## Site Information & Analysis

with two multi-functional park  
sport facilities. Additionally,  
a historical neighborhood which  
religious places and museums that  
cal people. Function is supposed  
focuses to tend people whether  
by touristic facilities and

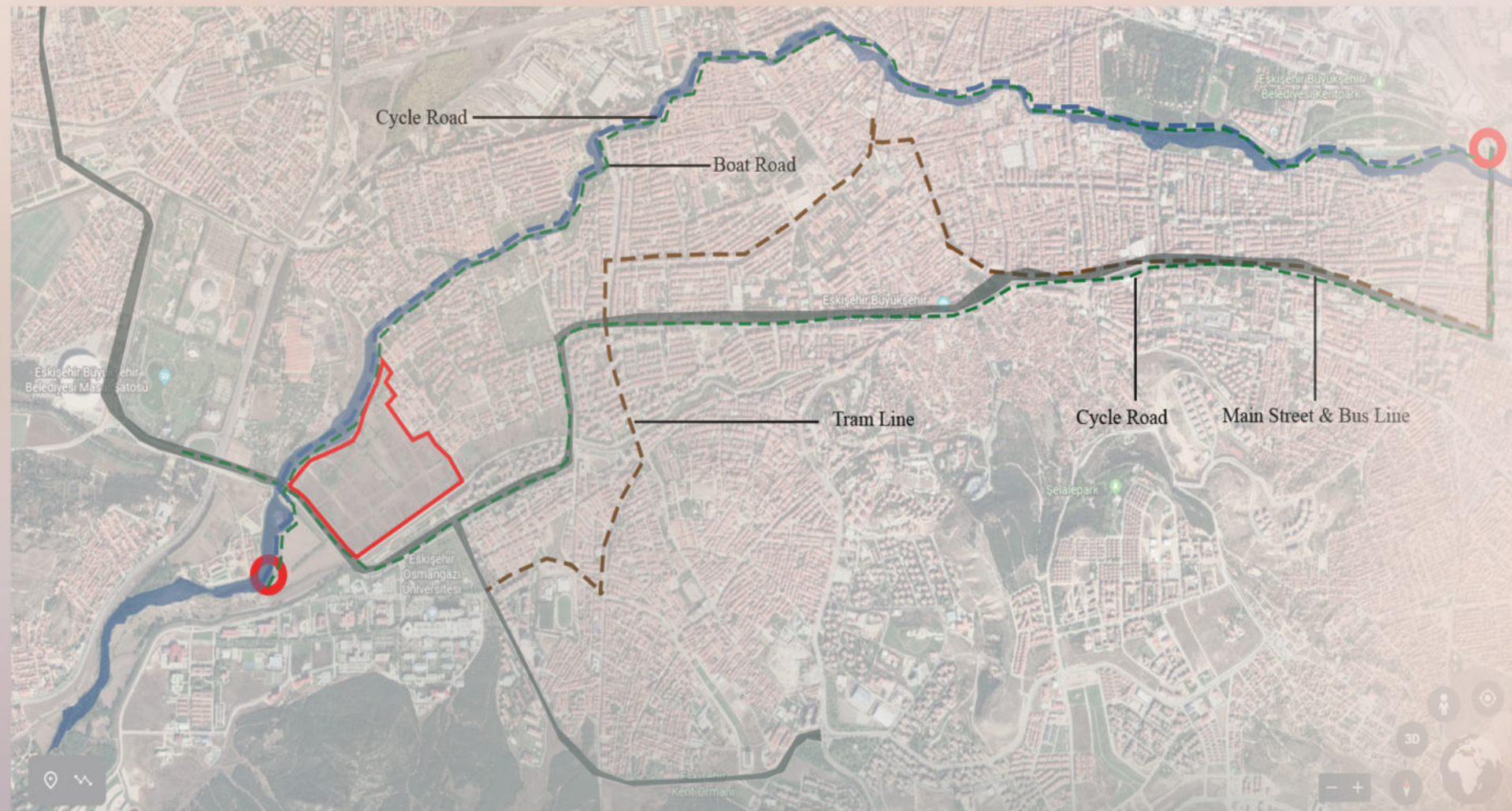


The close area of the site is  
generally residential areas  
with some commercial areas  
generally at the ground floor  
of the residential building.  
The site is also near to  
Faculty of Medicine which can  
allow create healthy programs.

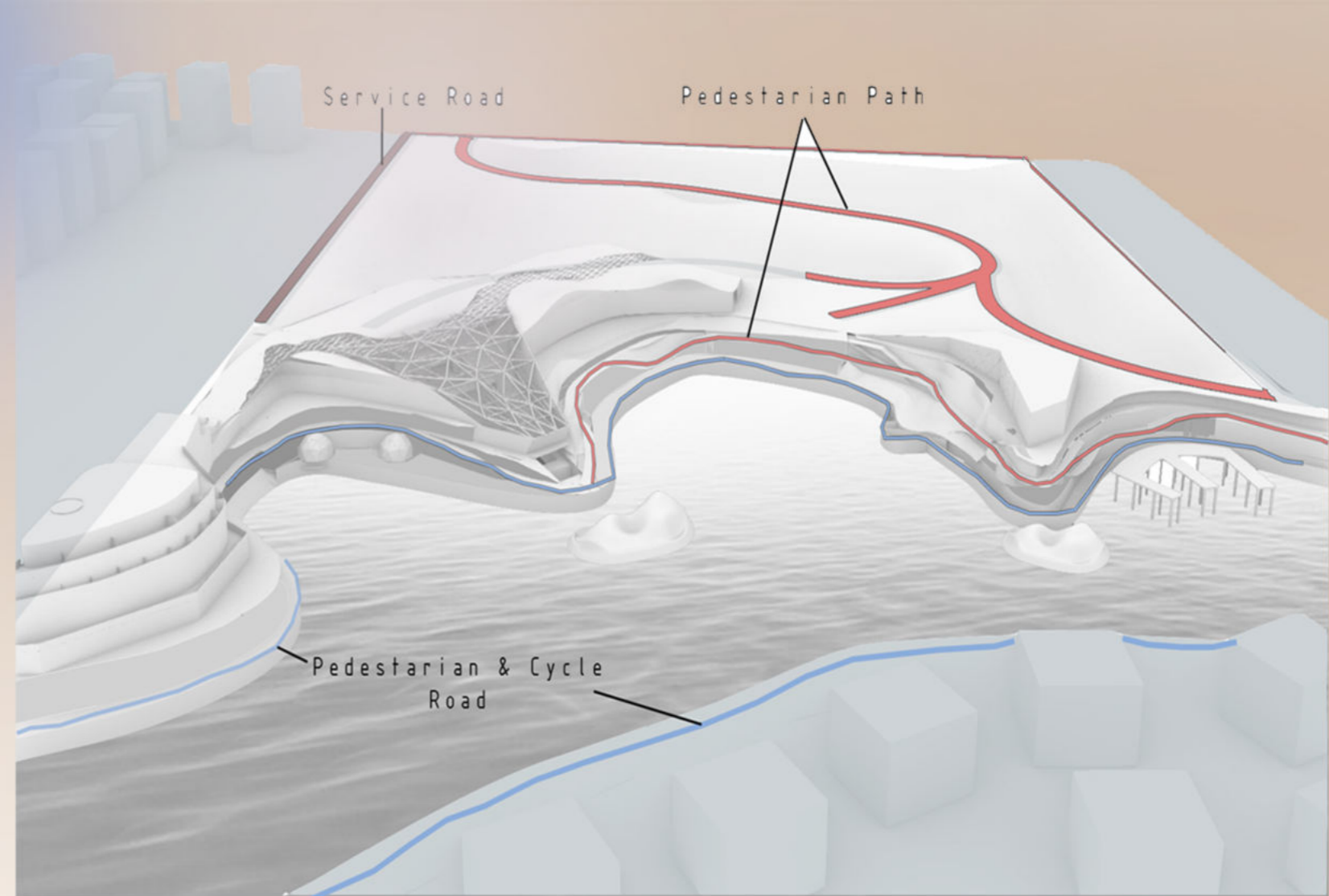
The site locates on boat transportation route by Porsuk River and it has direct accessibility from pier.

There is a cycle road along the Porsuk River and Atatürk boulevard which is called touristic route.

There is also tram line between the University and the Kentpark multi-functional Park.



## Site Information & Circulation



Site continues the existing cycle and pedestrian path without blocking the privacy/publicity degree by changing levels.



## Minghu Wetland Park

Minghu Wetland Park is designed and applied to keep the water level on optimum level for local and environmental needs.



## Kennedy Center for Theatre

Some artificial ponds and wetlands could be used in masterplan for some activities like fishing and ice skating.



## Landscape Urbanism

The project aims to create connection of green areas by increasing the landscape features and elements in selected area to connect ecosystem. Landscape urbanism is also supported on ecosystem of the river by Aquapond ideology.

## Aquapond

Porsuk river has signs of living creature at some parts but there are disconnection. The project aims to support the connection of disconnected points by Aquapond idea that empower the animal and plant ecology. Aquapond is also used for landscape vegetation by some natural ingredients such as fertilizer of fishes.

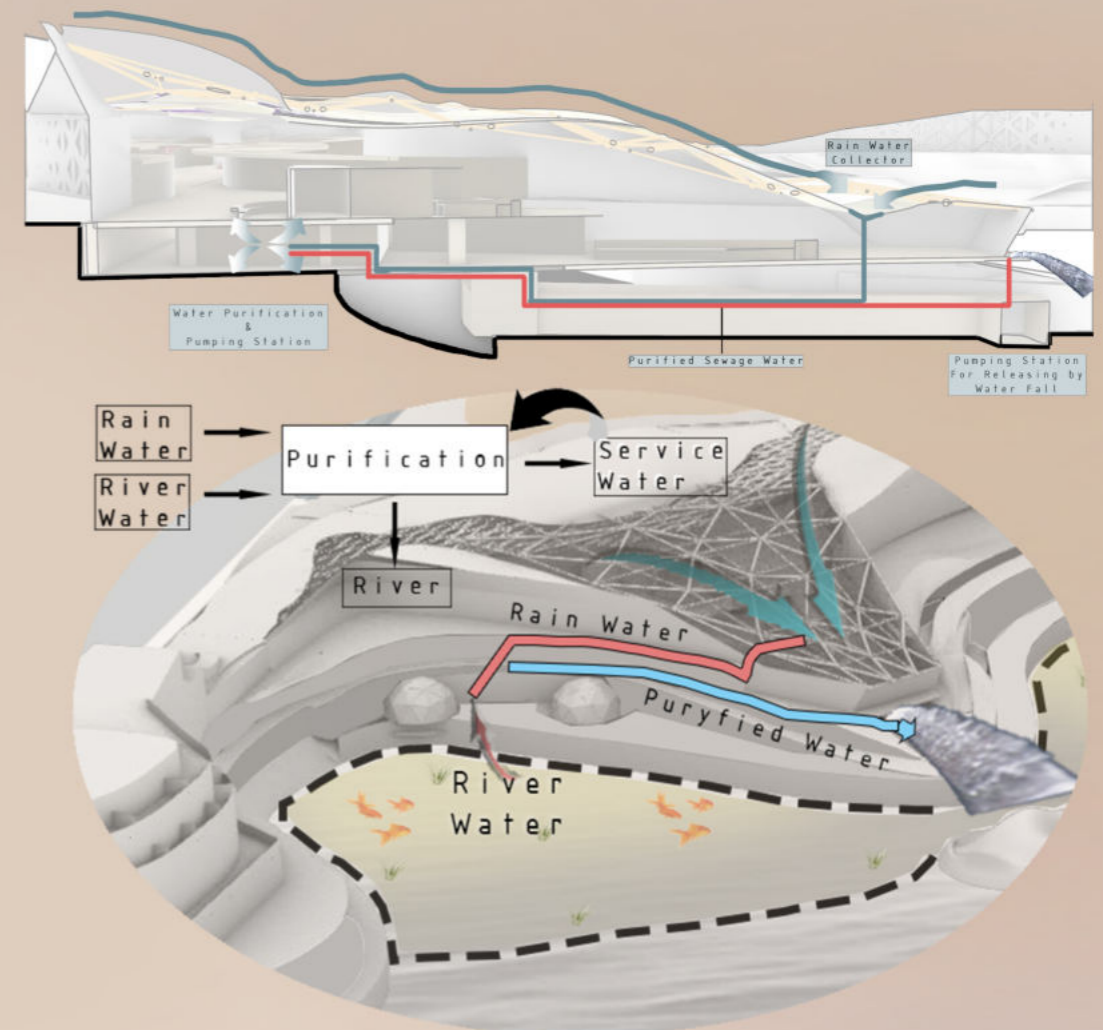
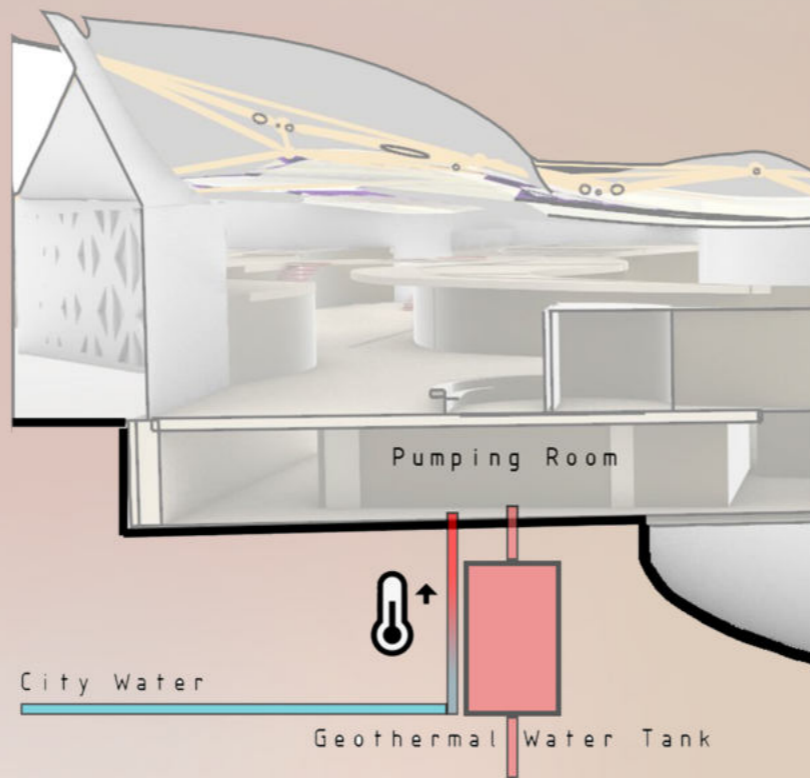
## New Urbanism

The projects aims to create a commercial area for not only tourists but also locals by environmental-friendly activities which benefit from natural facilities such as Porsuk river.



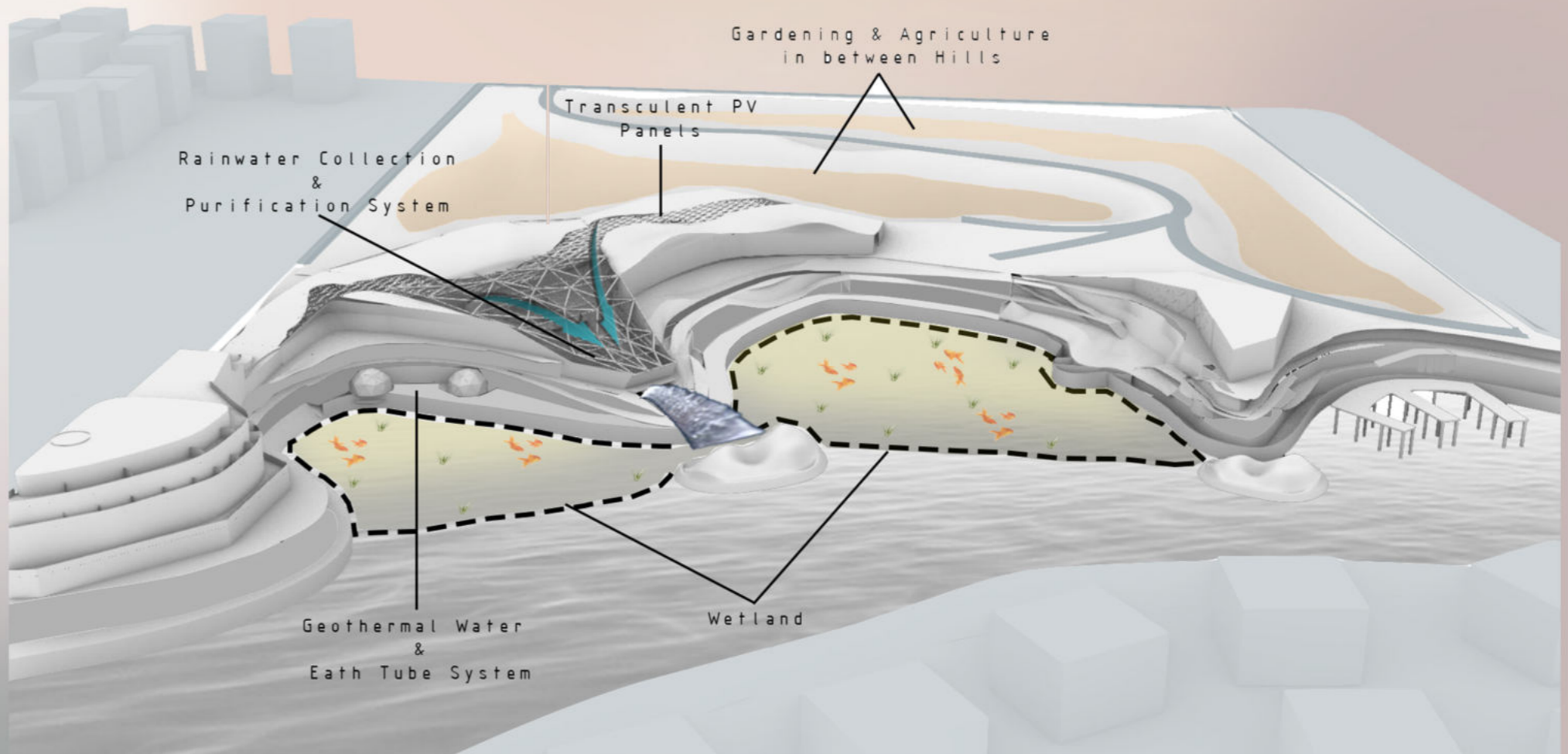
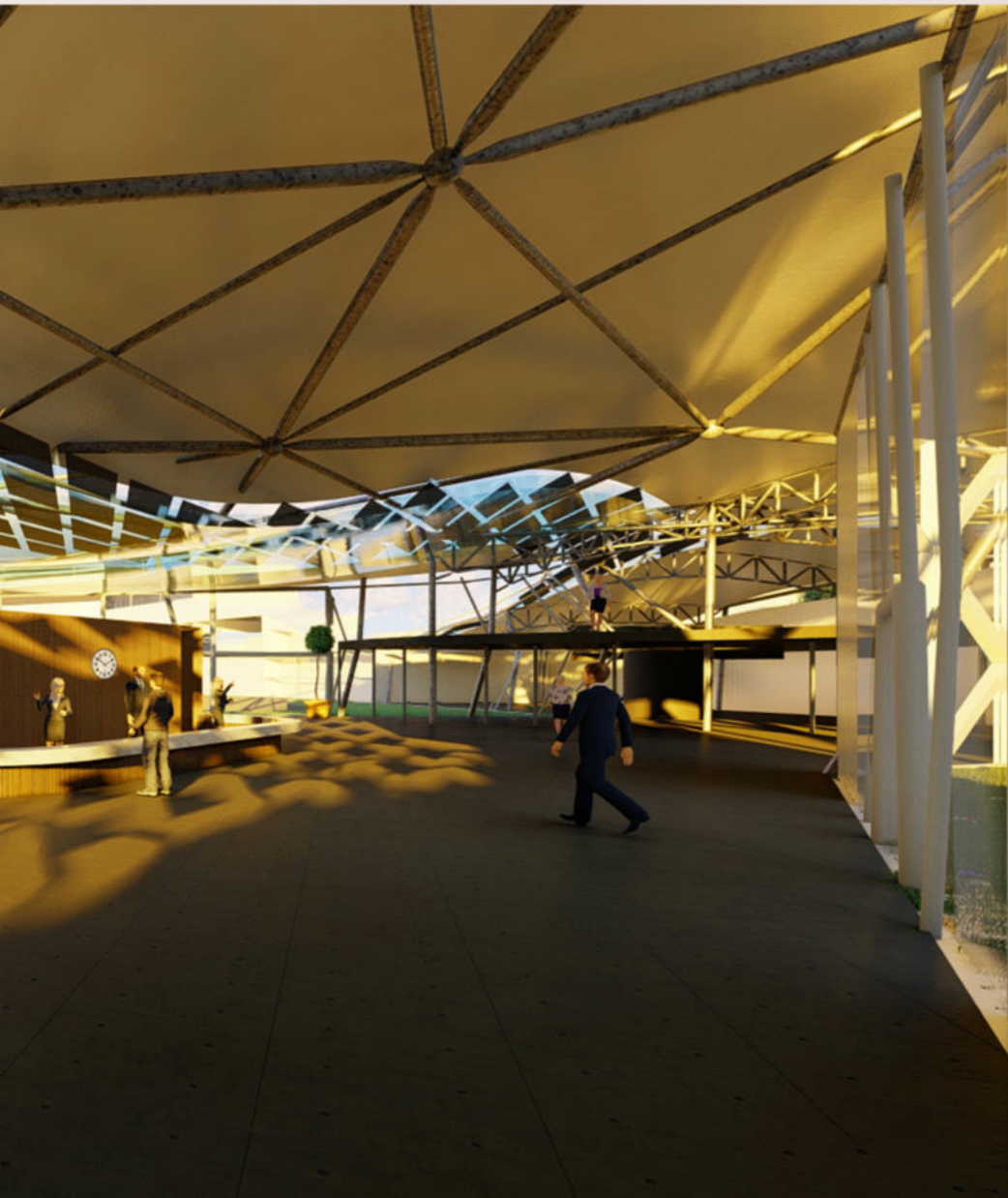


Münich Artificial Surf Area  
 By regulating the flow pressure of the river it allows to do surfing and also it allows to keep the water level on optimum level.



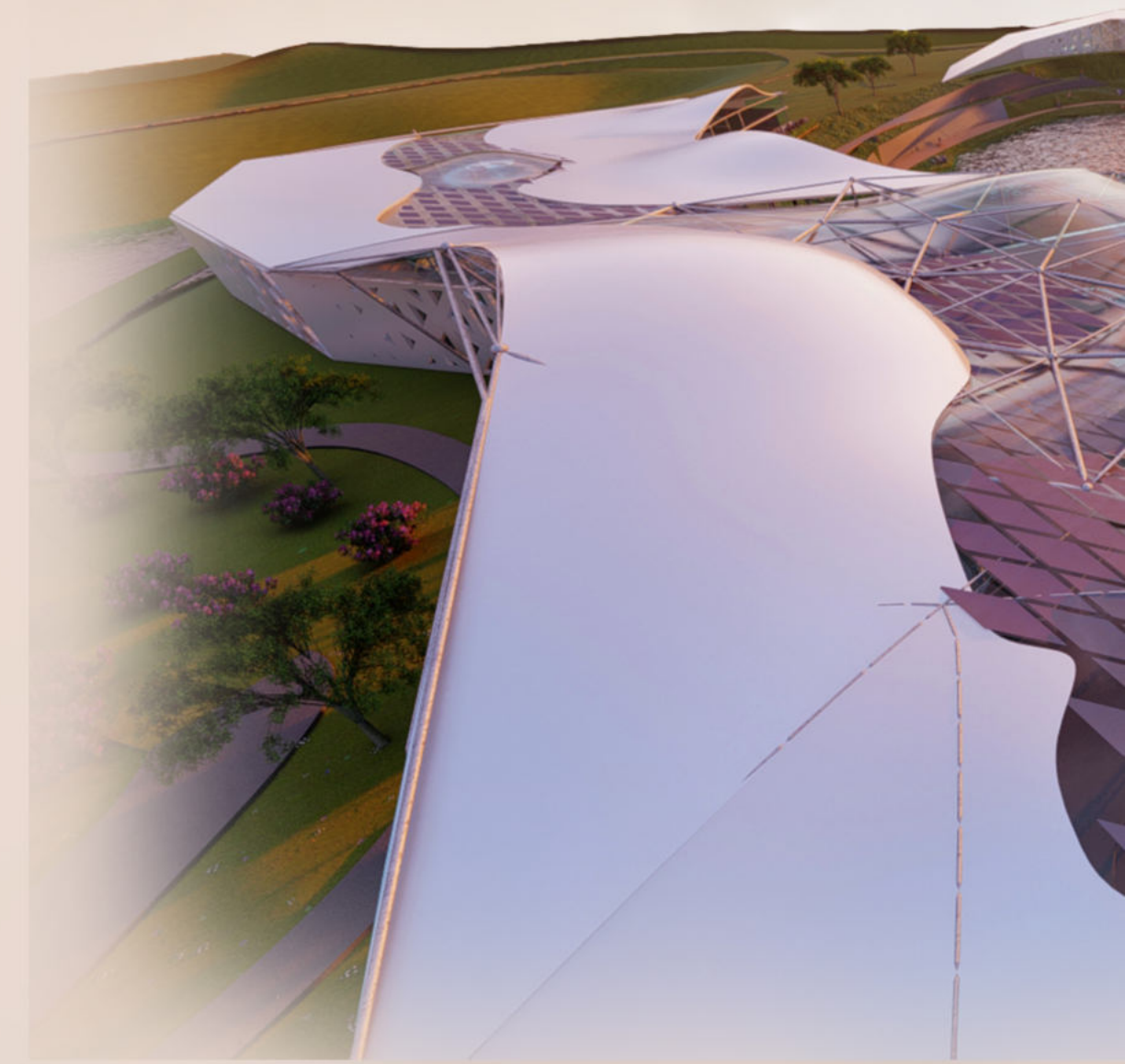
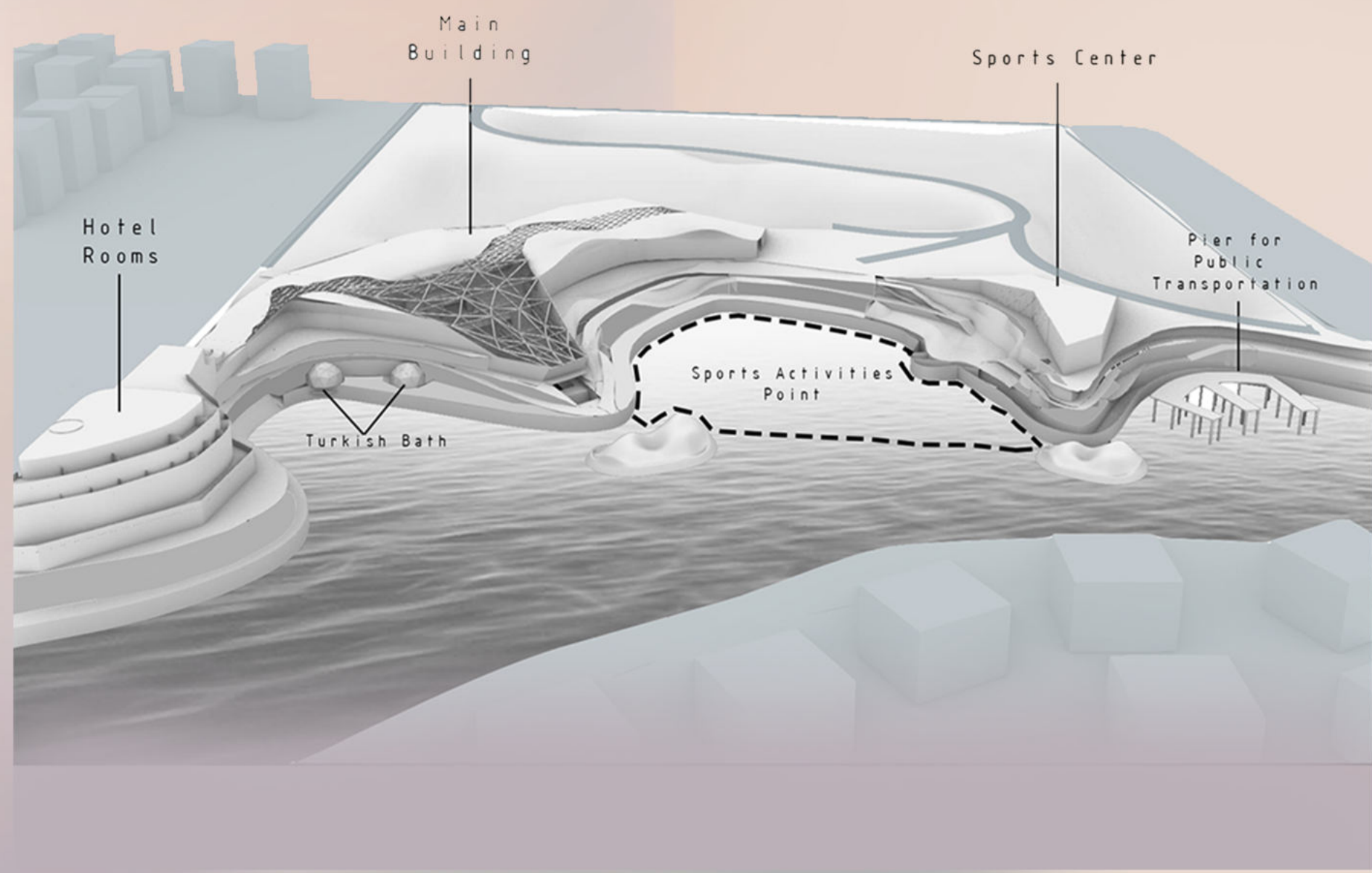
Earth Tube System with Geothermal Water Source

Rain-water Collection & Purification System



The idea of the program is creating attractive places and activities by using local and natural sources. For example, Turkish bath and SPA by using geothermal water source, white water kayak, ice skating and rowing on Porsuk River for different seasons. Additionally, ice skating and rowing is traditional activities for locals.

Swimming pool and hot tub on ground floor of hotel building.



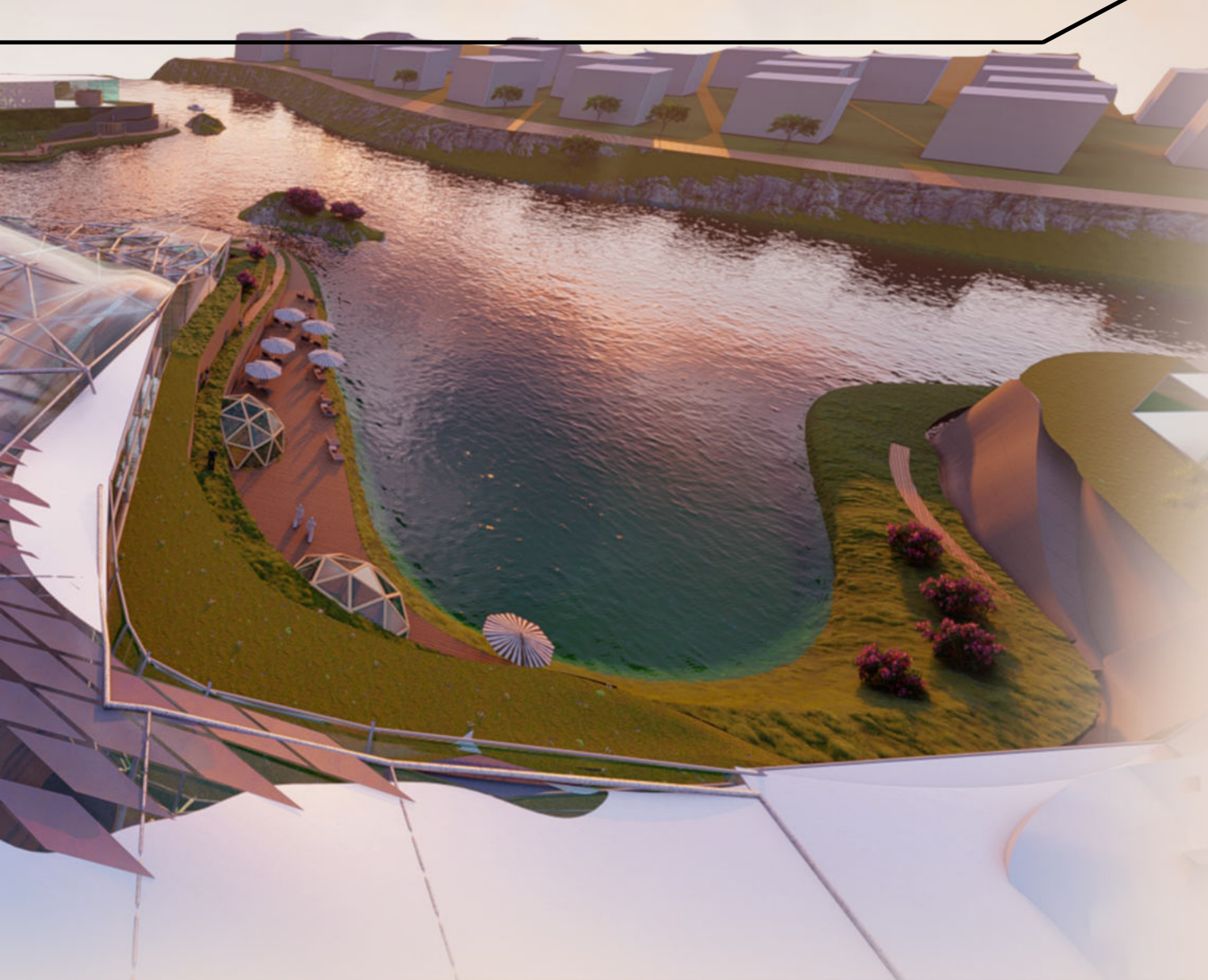
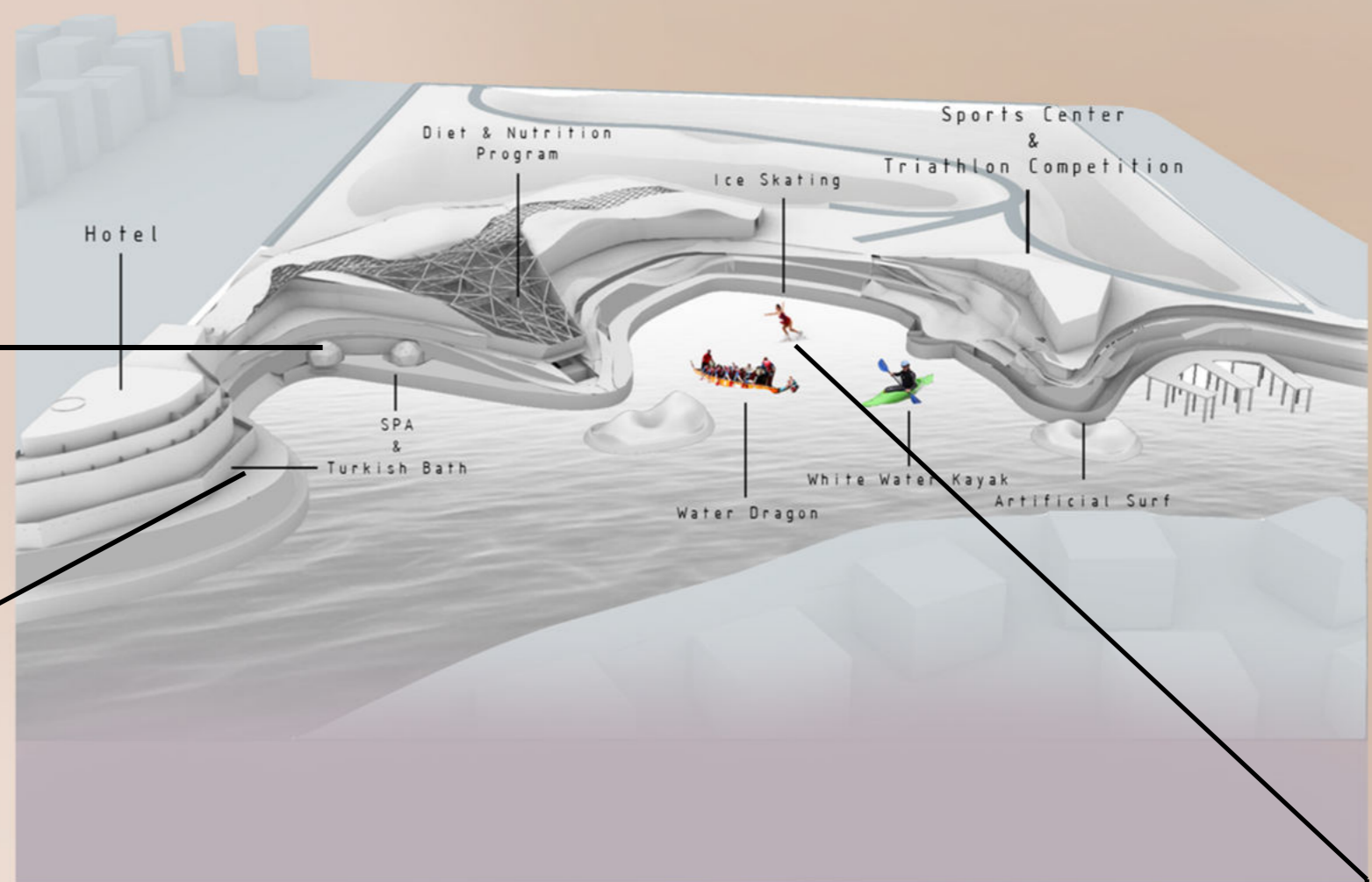
# Master Plan & Programming



place

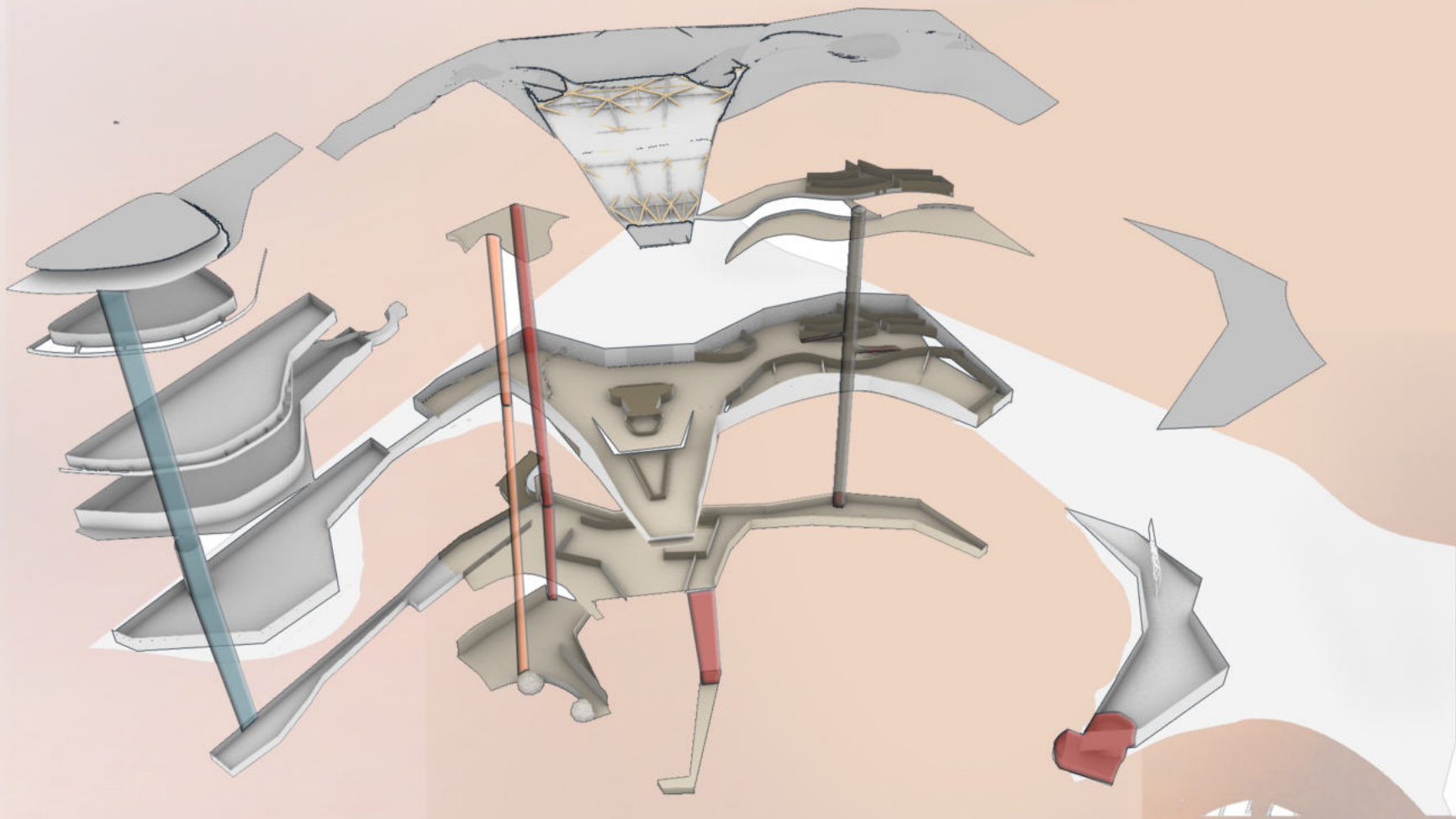


Turkish bath and Spa has space to rest side to Porsuk River.

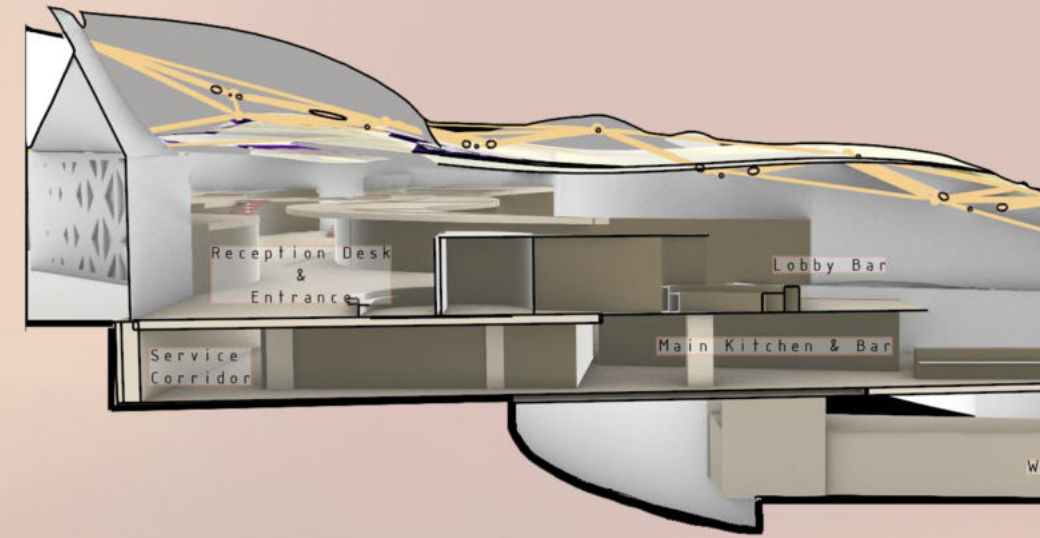


Riverside is extended by carving the site to be creating new spaces for activities such as ice skating which is easy to control the freezing level due to low depth of water.





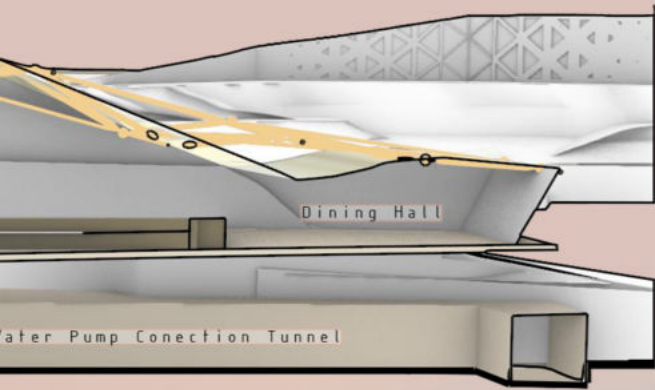
Service entrance is on first basement level which allows connection between the hotel and main building.



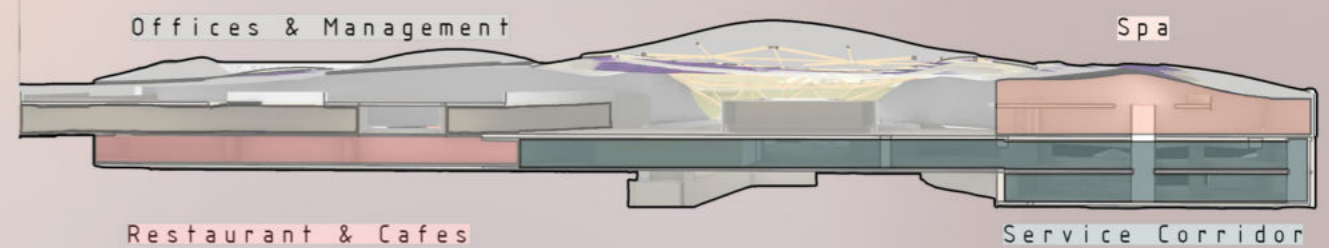
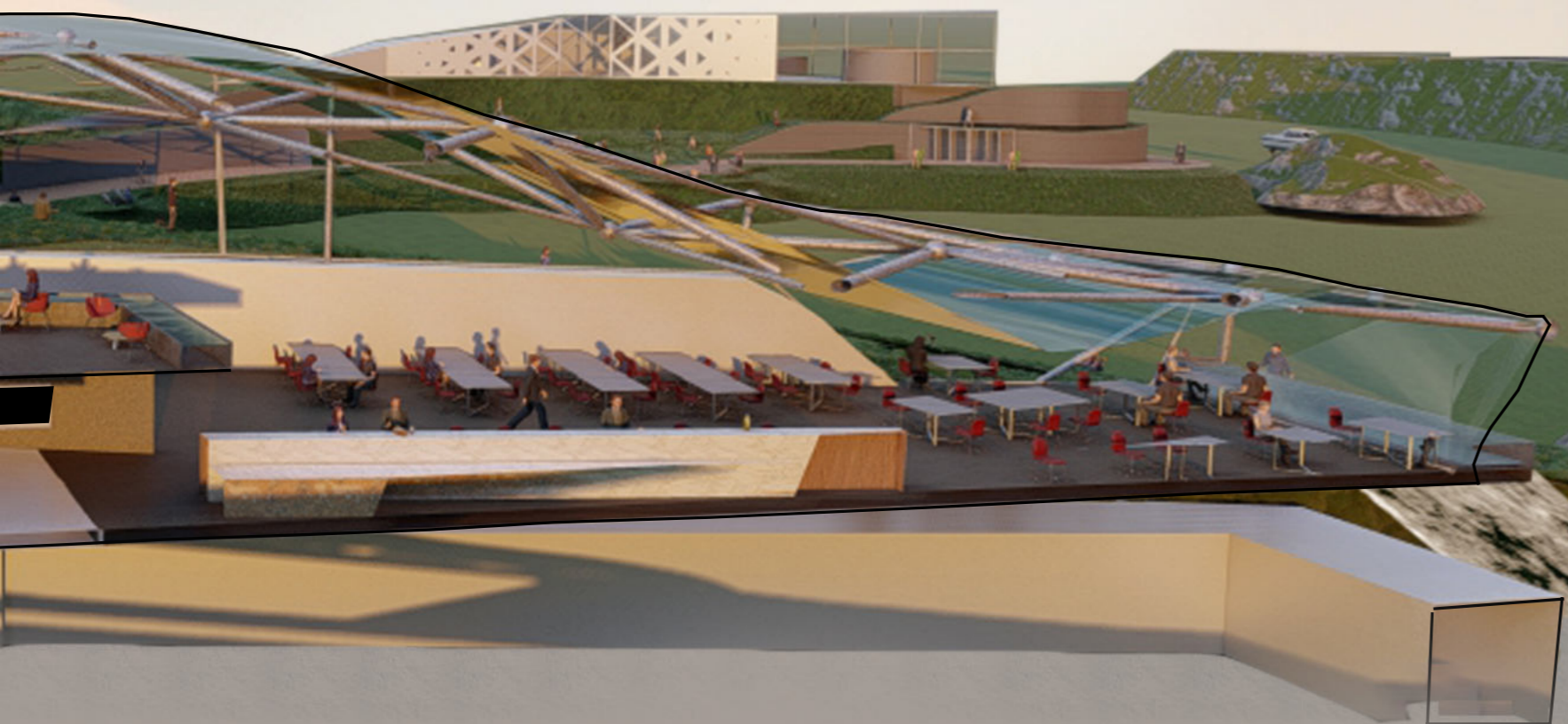
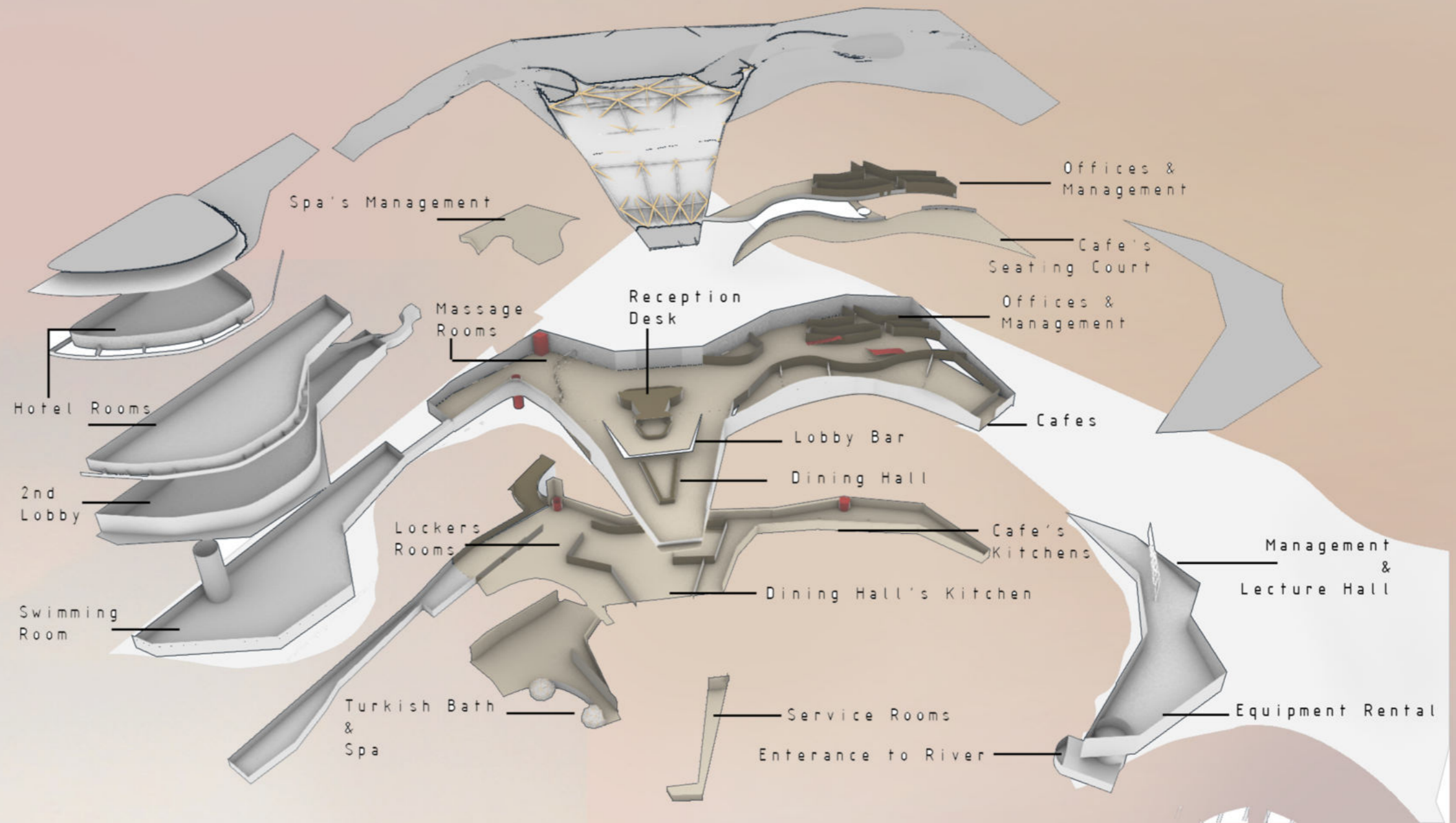
Main Dining Hall is ramps to entrance level difference allow to direct without level difference connection between service and dining hall.



Plans & Sections

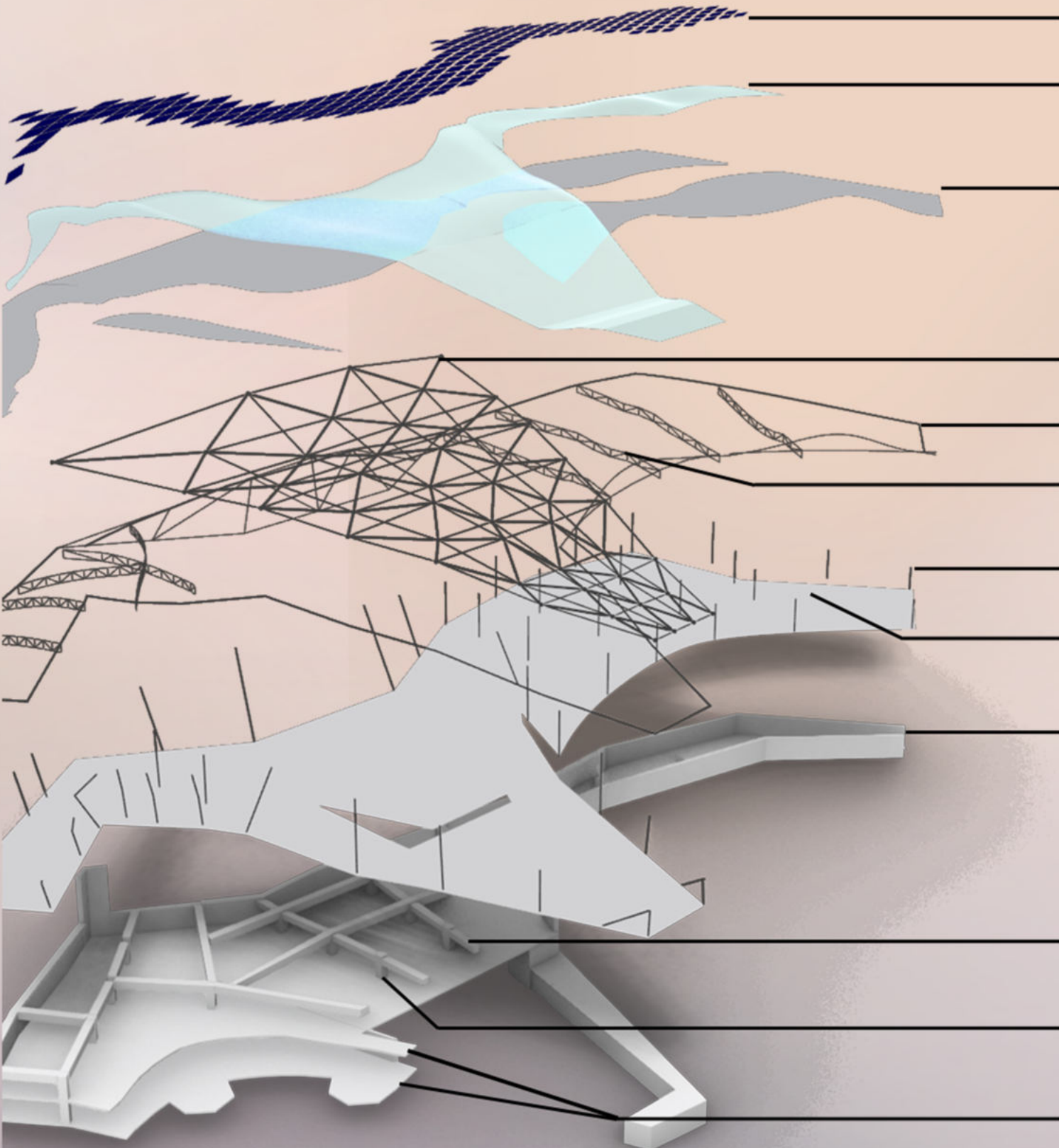


linked by  
 el. This level  
 ect access  
 ce on  
 vice kitchen





Titanium Dioxide  
Used as Roof  
Material



Translucent PV Panels

Tempered Glass

Titanium Dioxide

3D Truss

Main Steel Beam

Steel Truss

Steel Column

Steel Slab

Reinforced-Concrete  
Load-Bearing Wall

Reinforced-Concrete  
Beam

Reinforced-Concrete  
Column

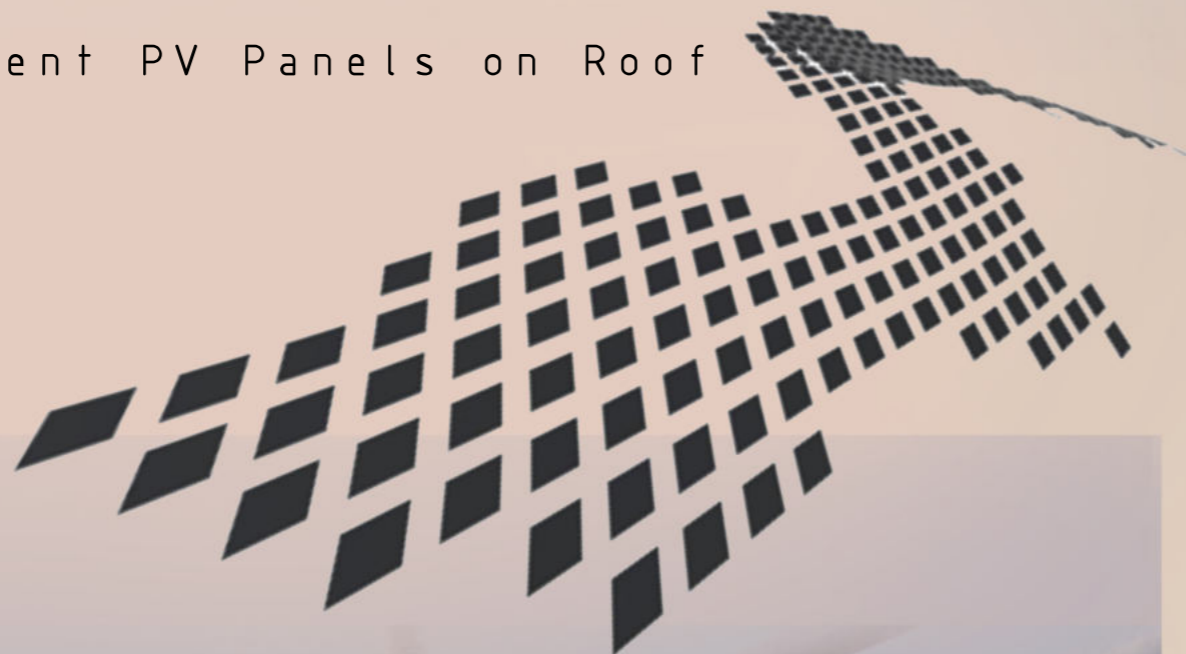
Reinforced-Concrete  
Slab



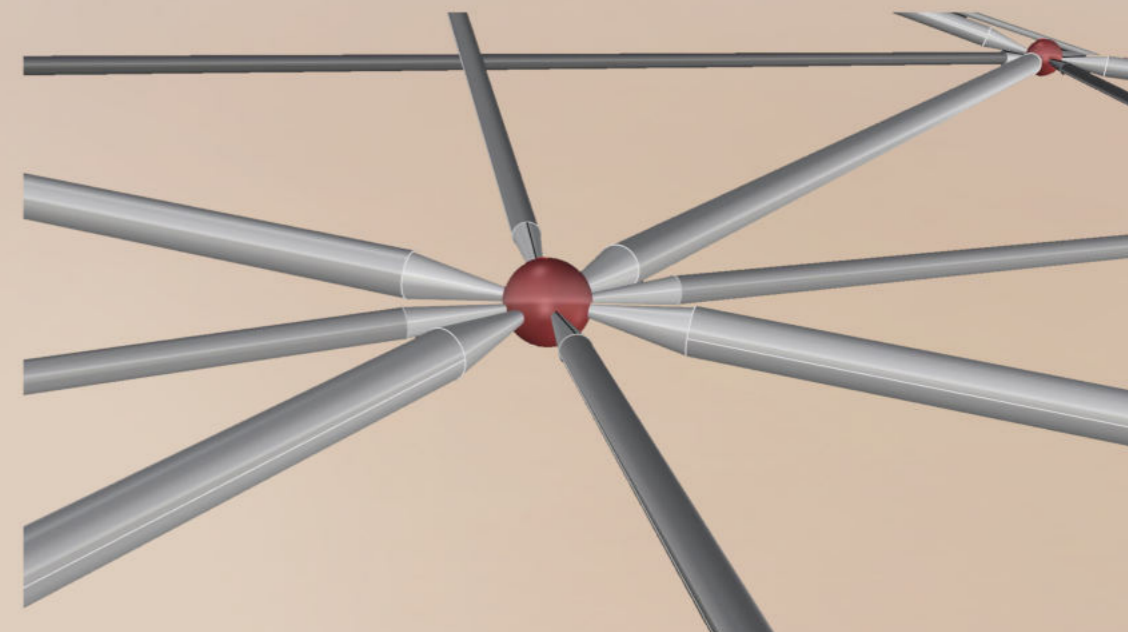
# Structure & Materials



Trasculent PV Panels on Roof



Cladding  
Facade



3D Truss Detail



Steel Structure Detail