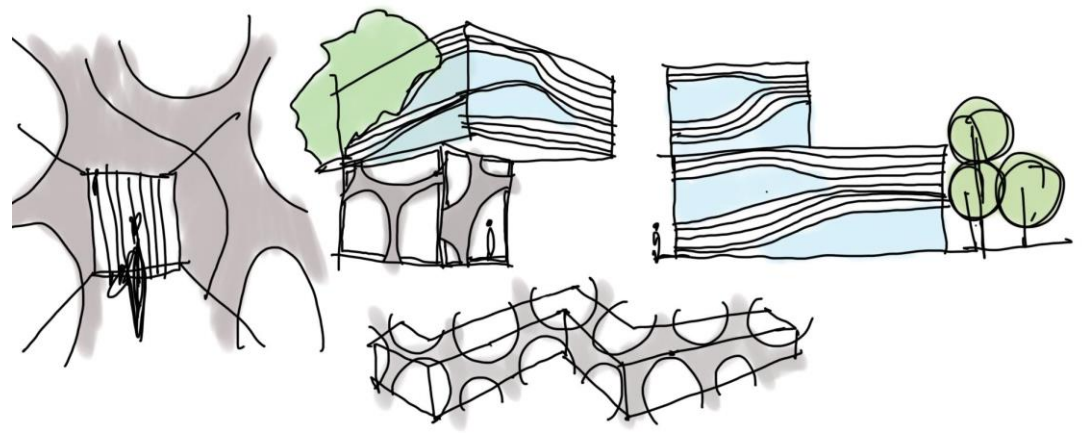
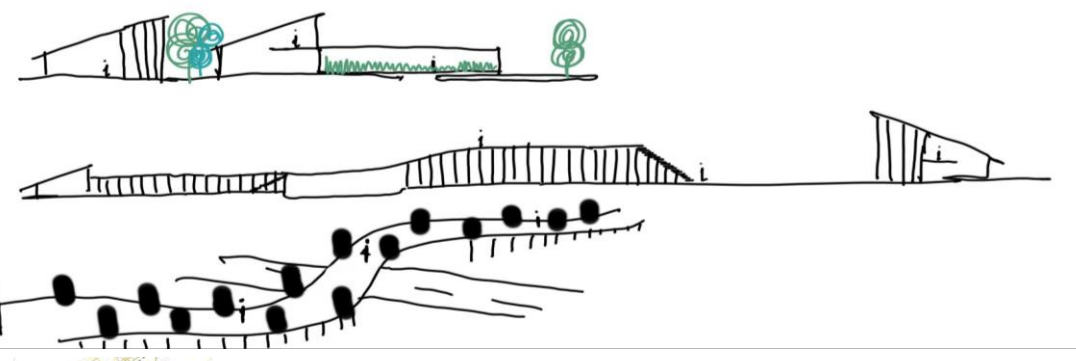
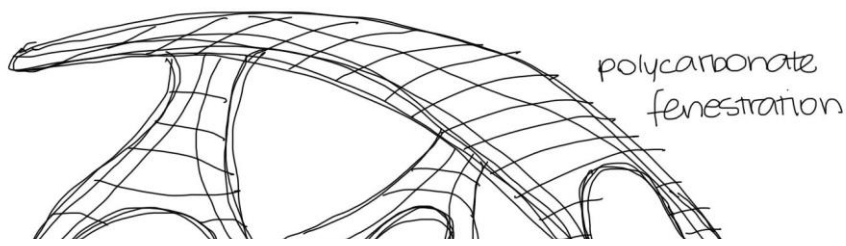
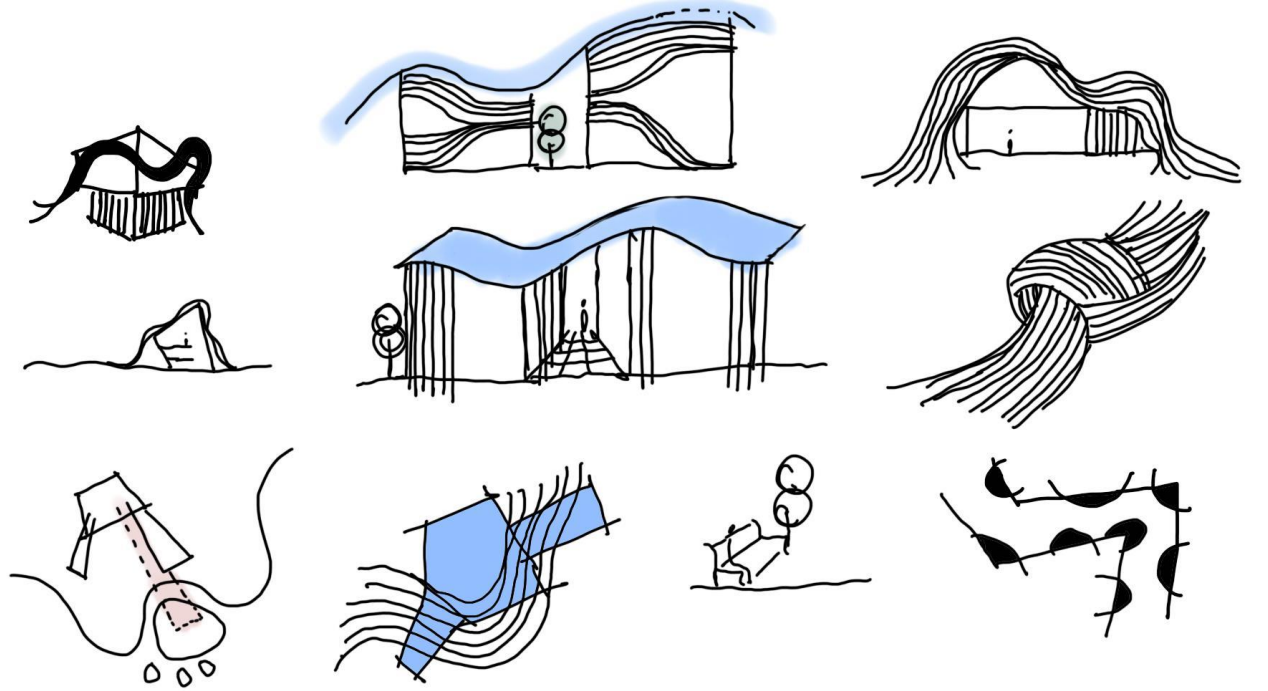
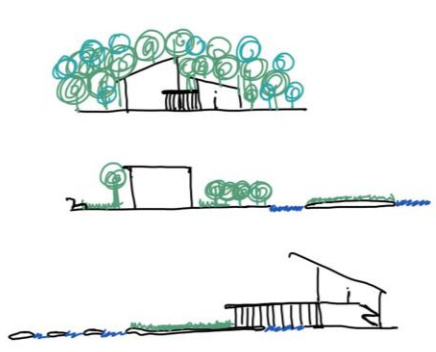
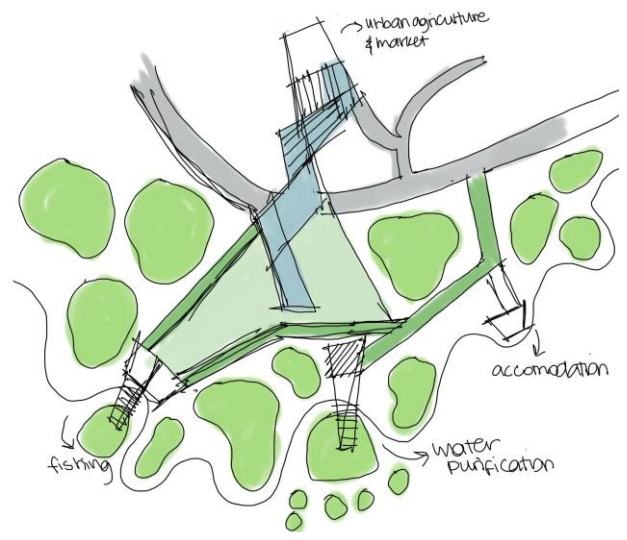


FIRST TURN
RANA GÜLİN GENÇ

CONTENTS

- INTRODUCTION
- SITE ANALYSIS
- LIT REVIEW
- CASE STUDIES
- THE DESIGN



INTRODUCTION



AYVALIK

General Information About Ayvalık

- Ayvalık population is 70.000
- Mediterranean climate can be seen.
- Mostly stable but on summers wind from Kaz Mountains dominates the weather.
- People's livelihood mostly based on olive and olive products but also pine nuts, cotton and Kozak honey.



FLORA

- Ayvalik is in protected area category since 11 September 1946.
- There is 750 different species in Ayvalik.
- 17 of them is Anatolian and 4 of them is endemic.
- Red pine, pistacchio pine, olive trees, oak and maquis are exist on the site.



UNDERWATER

- There is 142 different species of fish.
- Eel, blue fish, bonito, sardine and mackerel fish are the examples.
- Also red coral can be seen underwater only in Ayvalik.



SOME THREATS FOR AYVALIK

- Drying wetlands
- Secondary housing
- Fires
- Hunting
- Tourism
- No sewage system
- Poaching



THE SITE



Tulip Island

Cunda Island

Ayvalık

SITE AREA



From hill to the sea

From sea to the hill

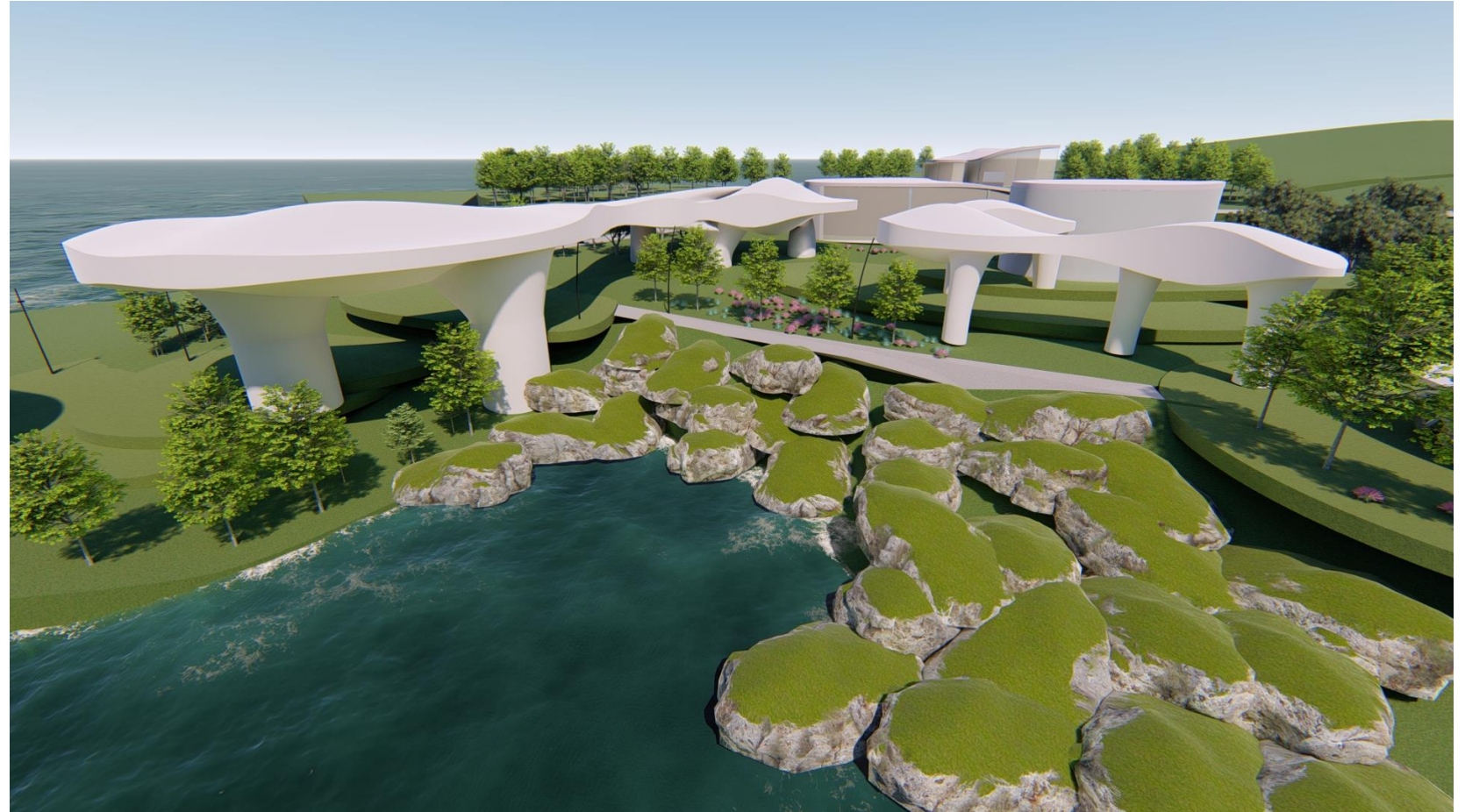




LIT REVIEW

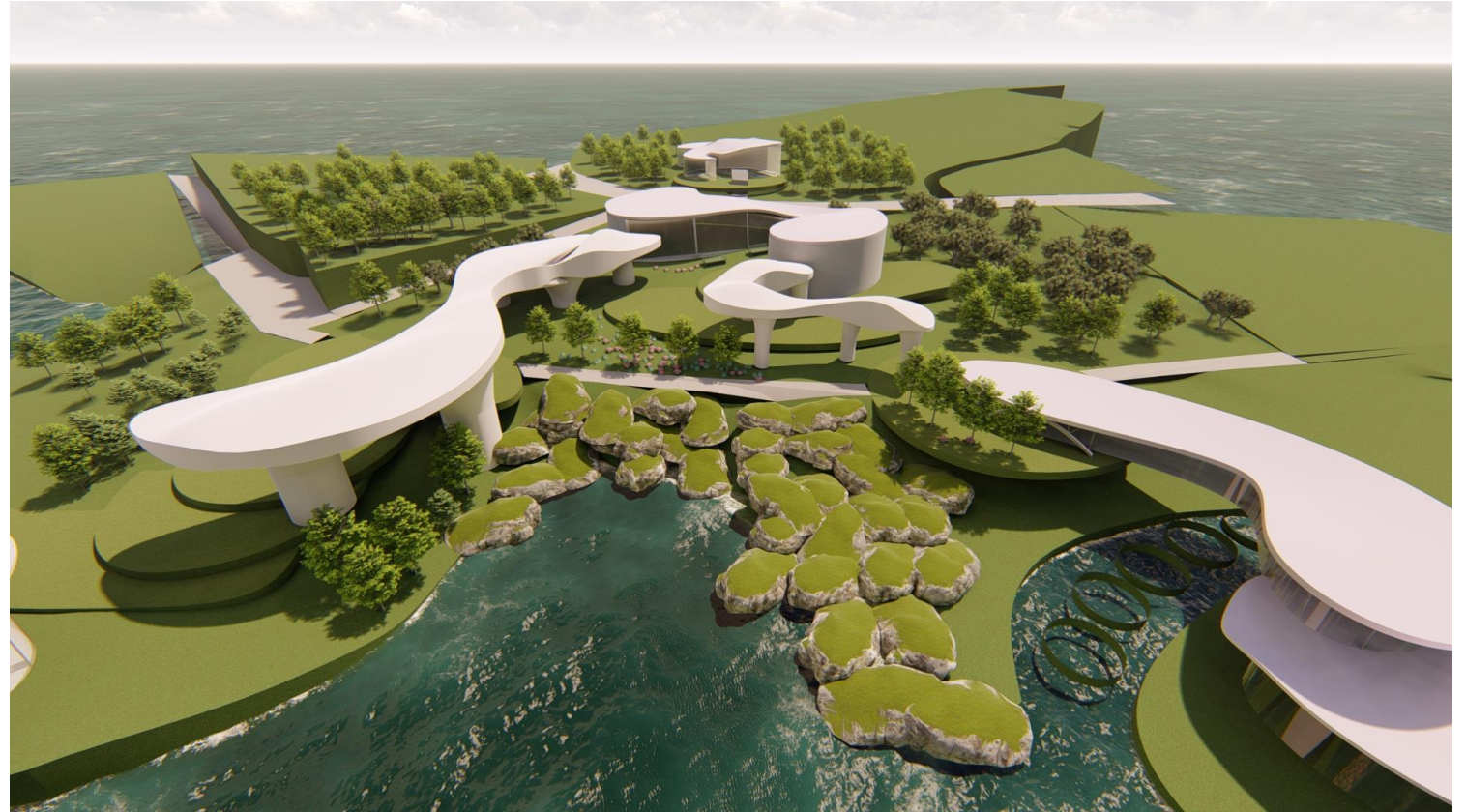
URBAN MARKET

- New job alternatives
- Local product selling
- Increasing economy
- Opportunities



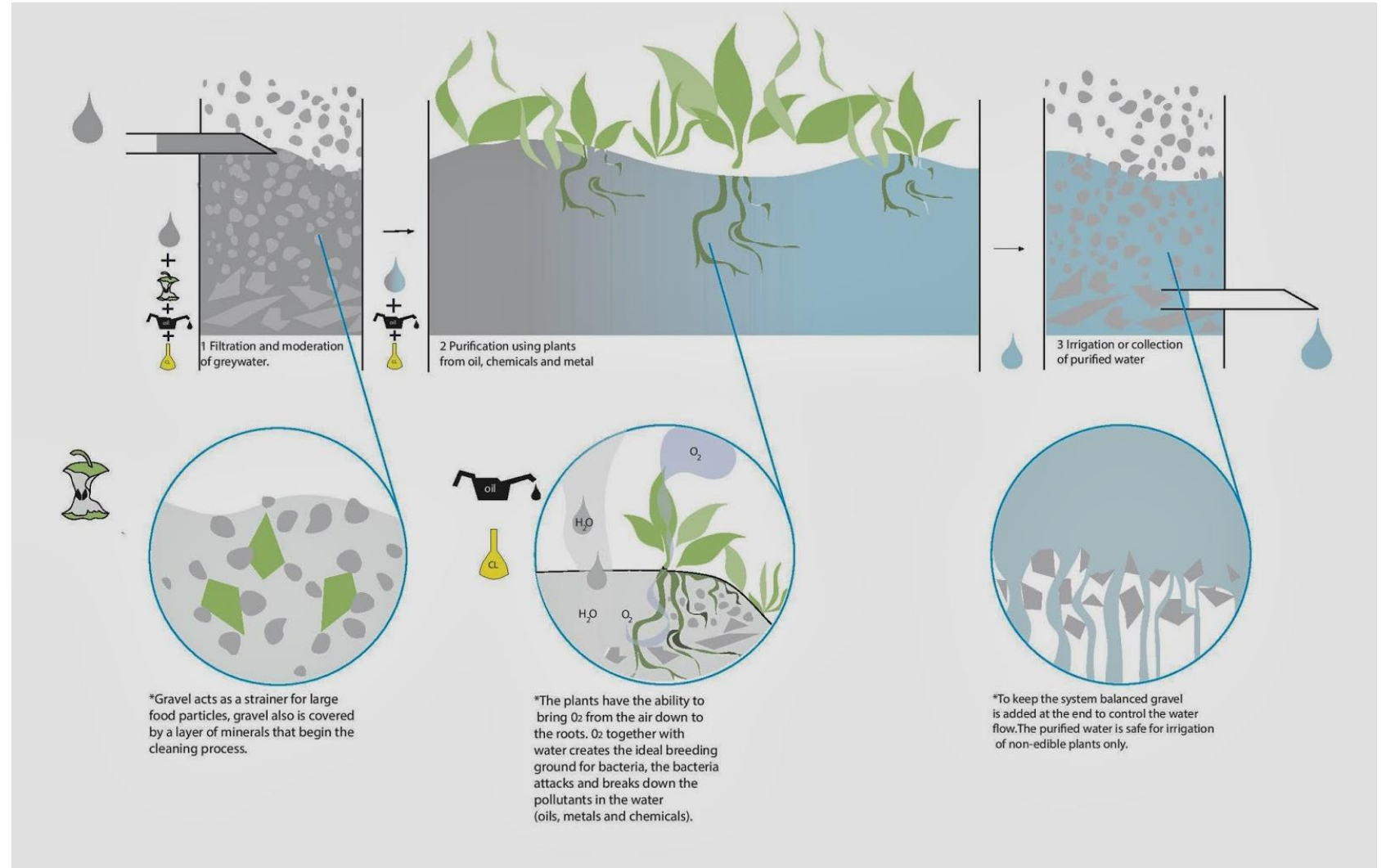
LANDSCAPE URBANISM

- Relief to urban life
- Healthy life style
- Communication between people
- Fields for action



WATER PURIFICATION

- Suitable drinking water
- Fit usage of water
- More healthy





CASE STUDIES

7000 Oaks Park at CEVA Station / Daniel Zamarbide + Leopold Banchini



https://www.archdaily.com/951111/7000-oaks-daniel-zamarbide-plus-leopold-banchini?ad_source=search&ad_medium=search_result_projects

Gad Line+Studio above Dongximen Village, China



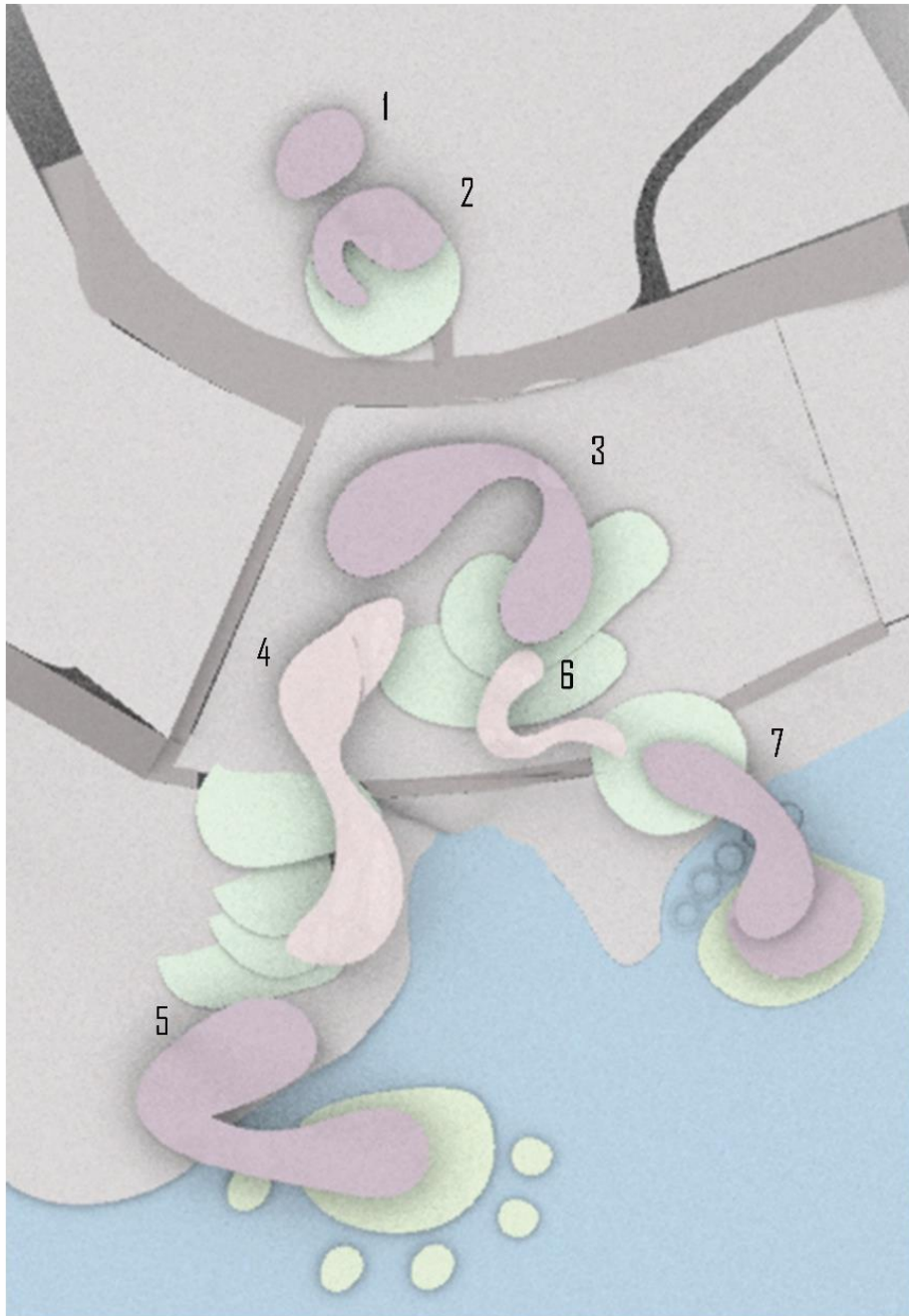
Dongdaemun Design Plaza and Park (DDP) Zaha Hadid



<https://www.archdaily.com/489604/dongdaemun-design-plaza-zaha-hadid-architects>



THE DESIGN



1 - Accomodaiton

2 - Urban Agriculture

3 - Lobby & Educational Area

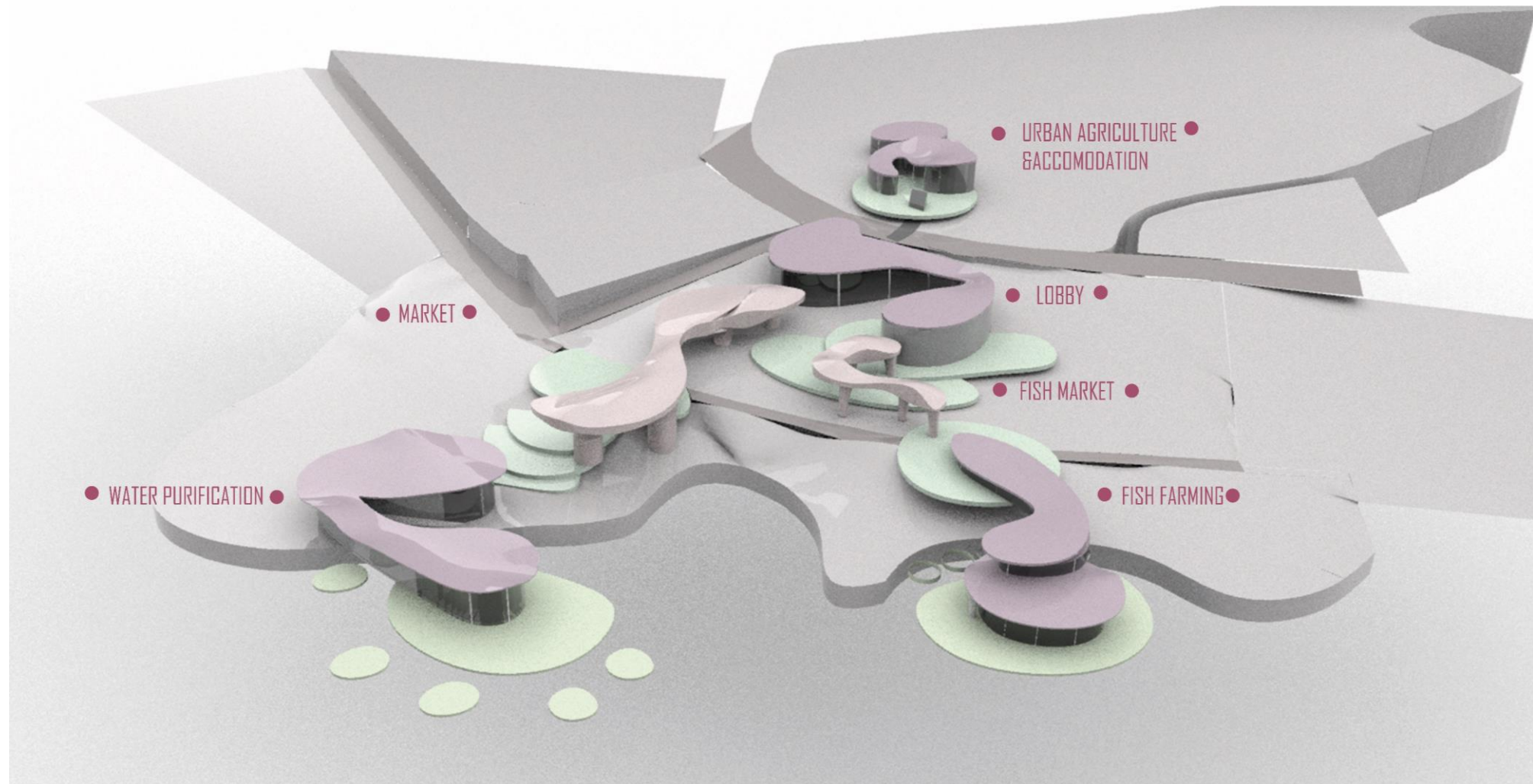
4 - Urban Market

5 - Water Purification

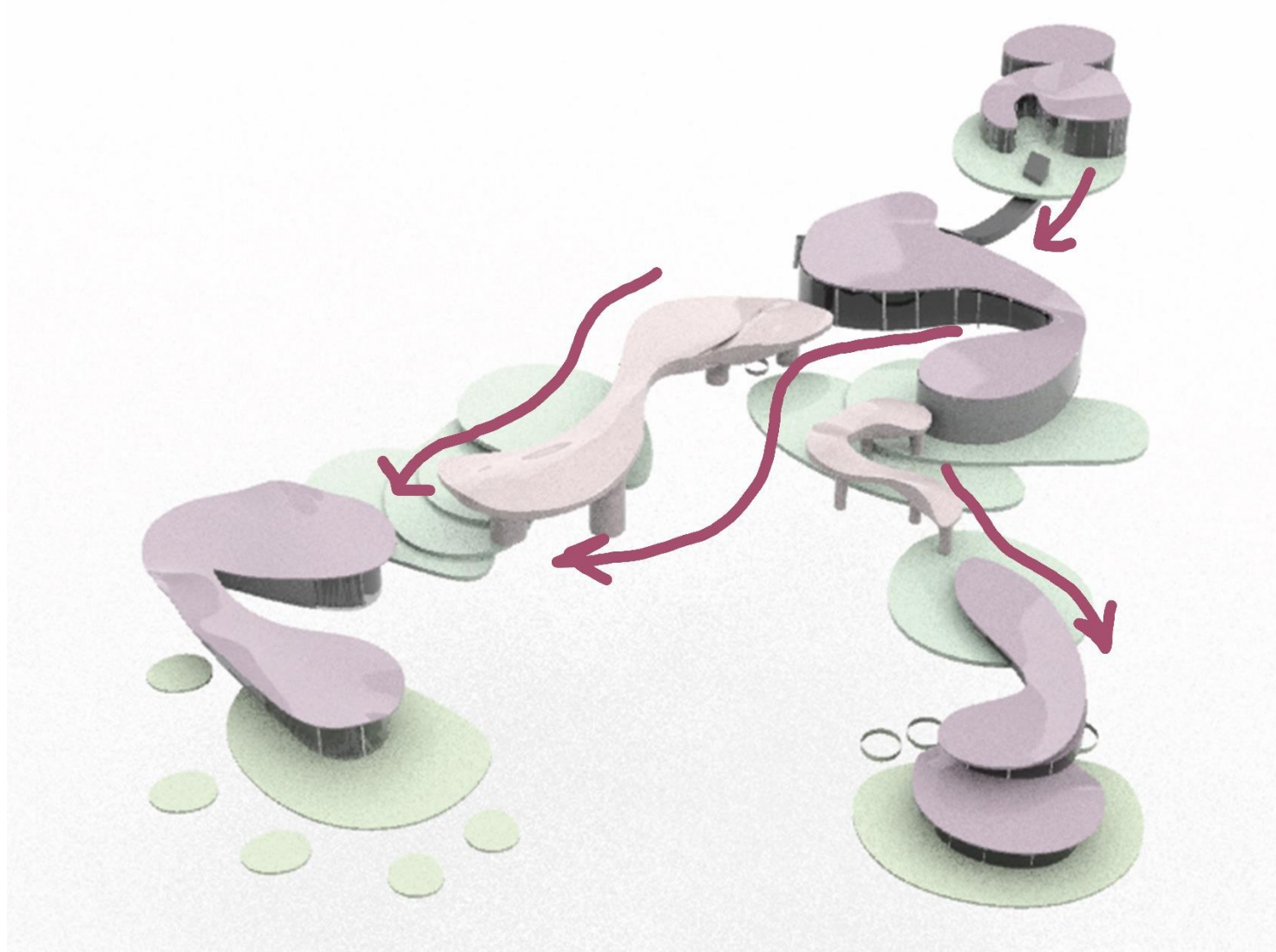
6 - Fish Market

7 - Fish Farming

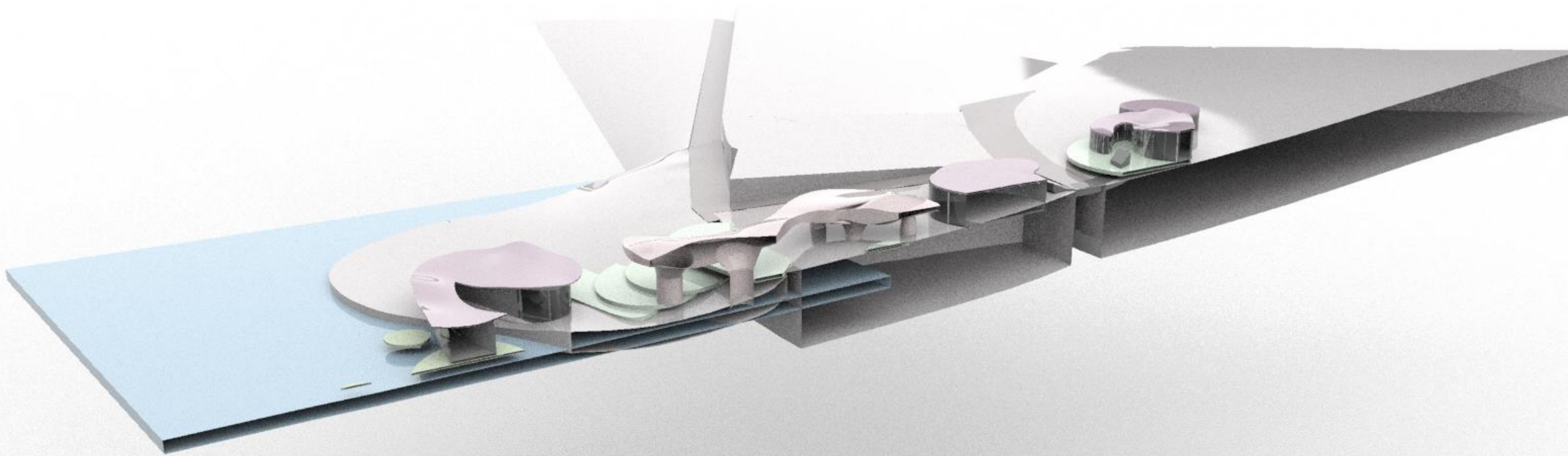
FUNCTIONS



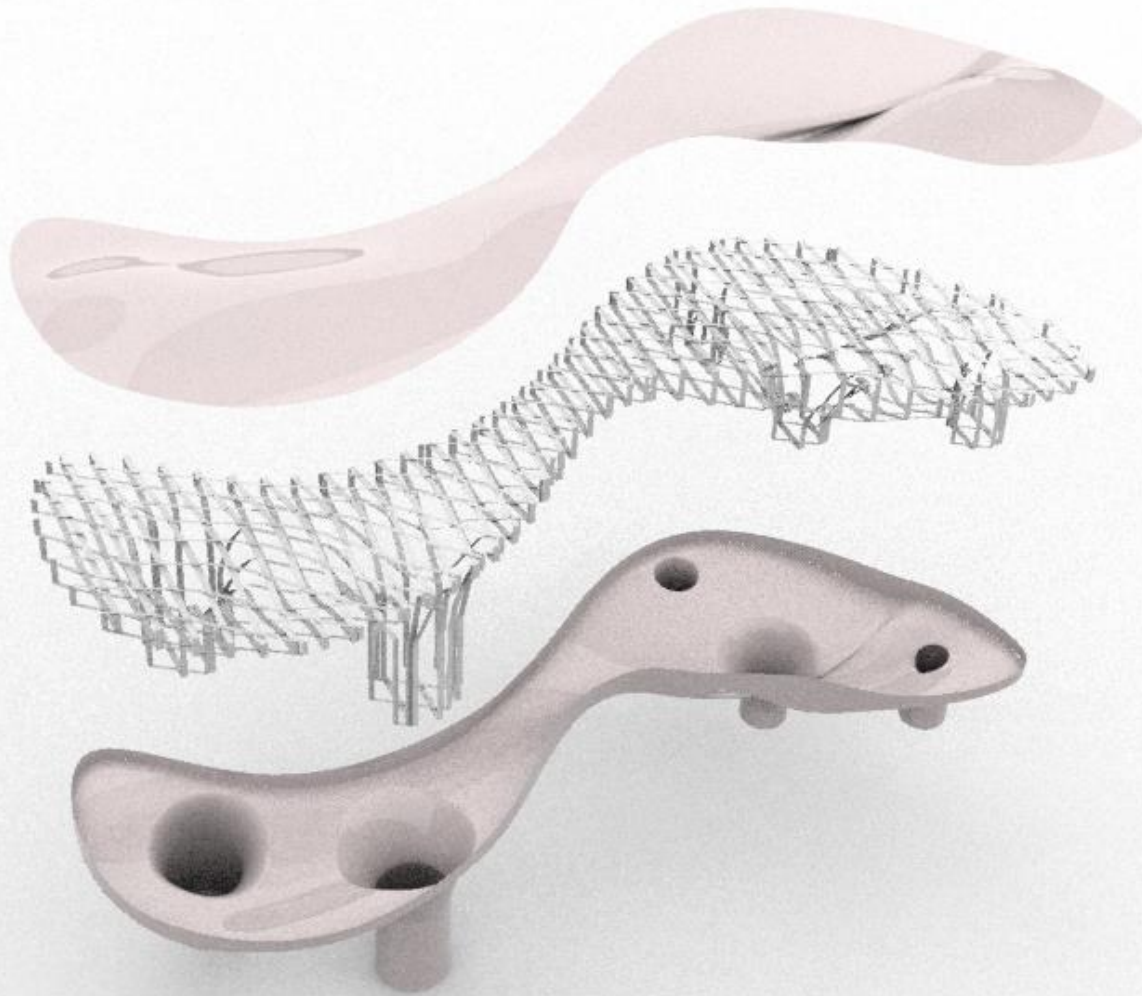
CIRCULATION



SITE SECTION



MARKET STRUCTURE



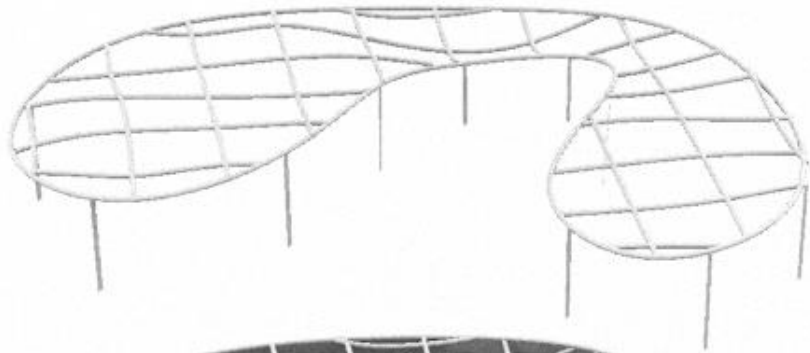
Glass fibre reinforced concrete

Steel diagrid

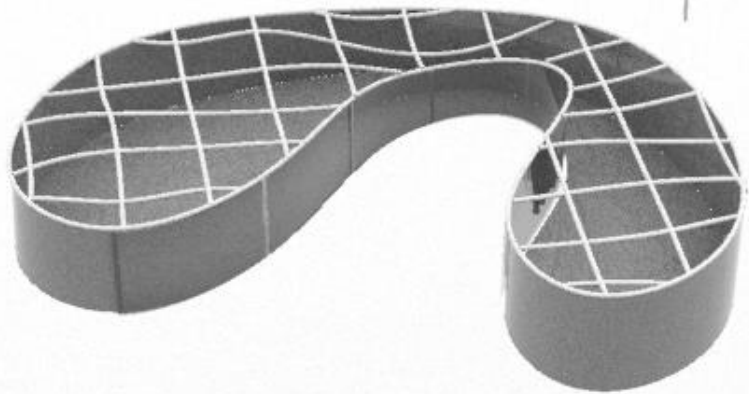
BUILDING STRUCTURE



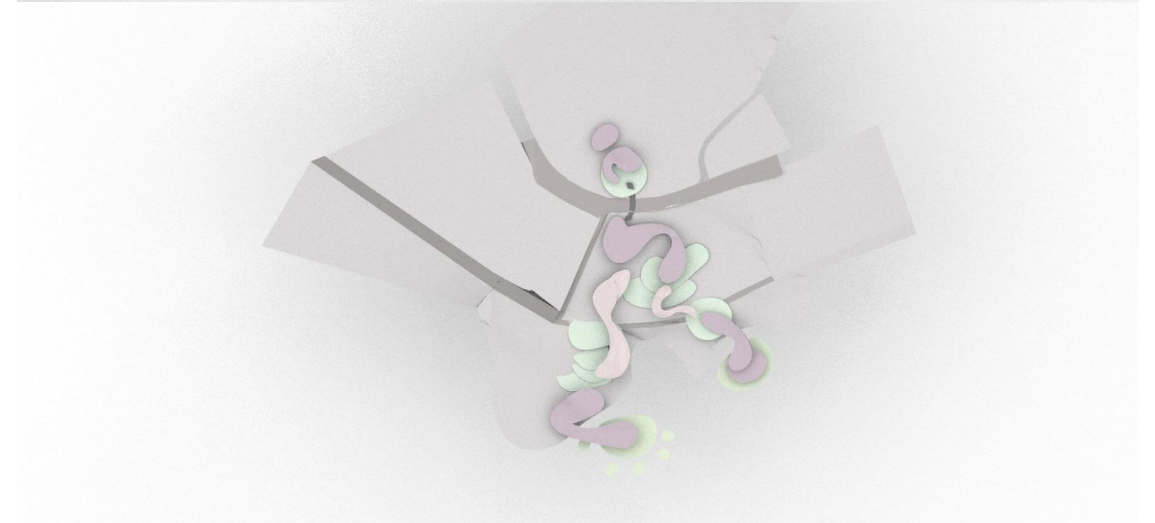
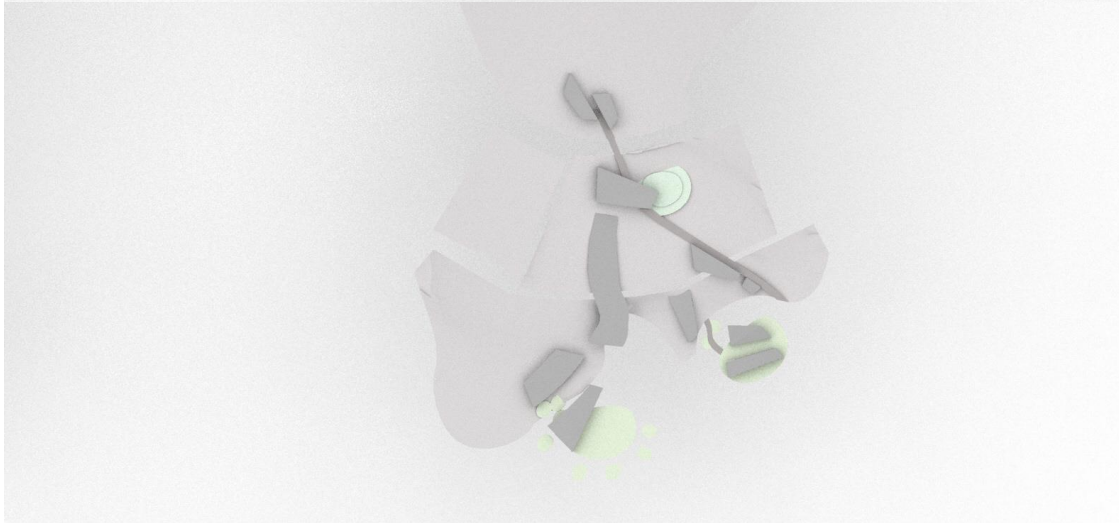
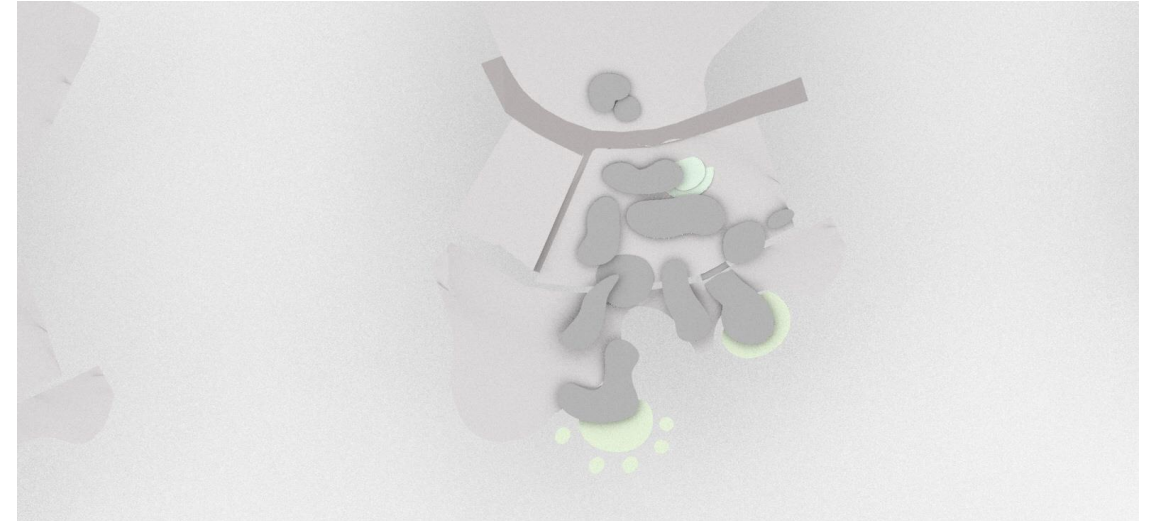
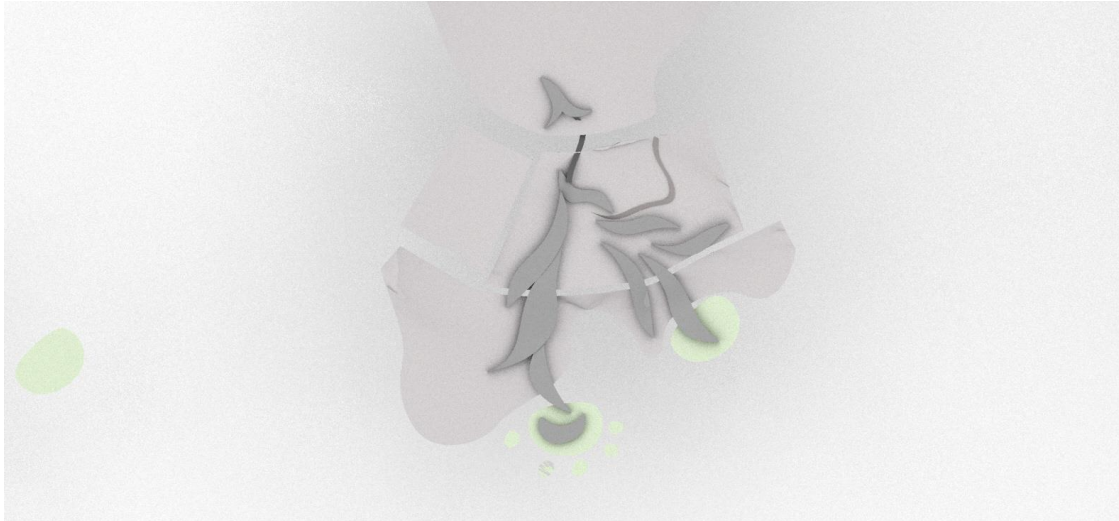
Glass- fibre reinforced concrete



Steel diaphragm

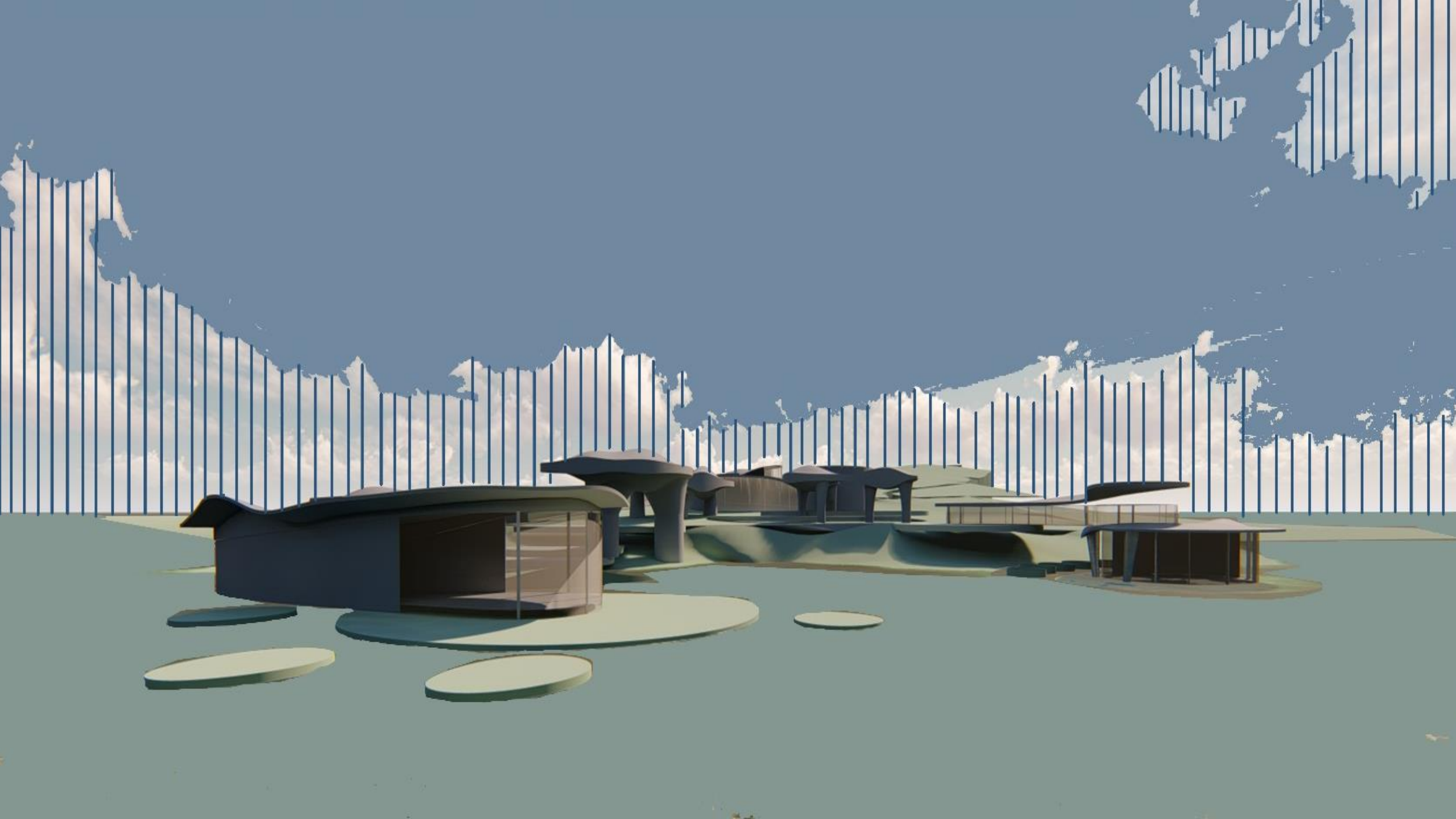


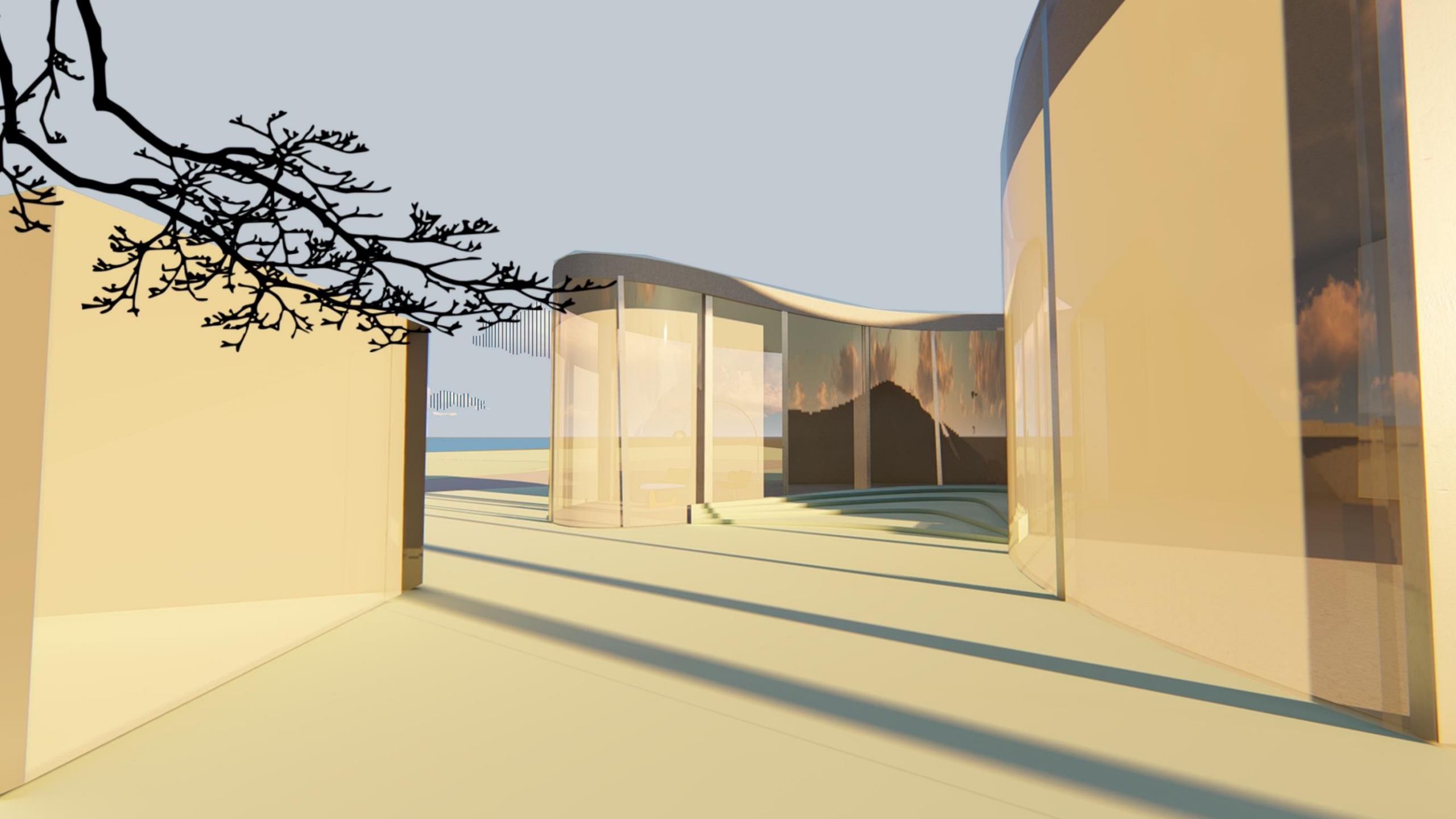
PROCESS

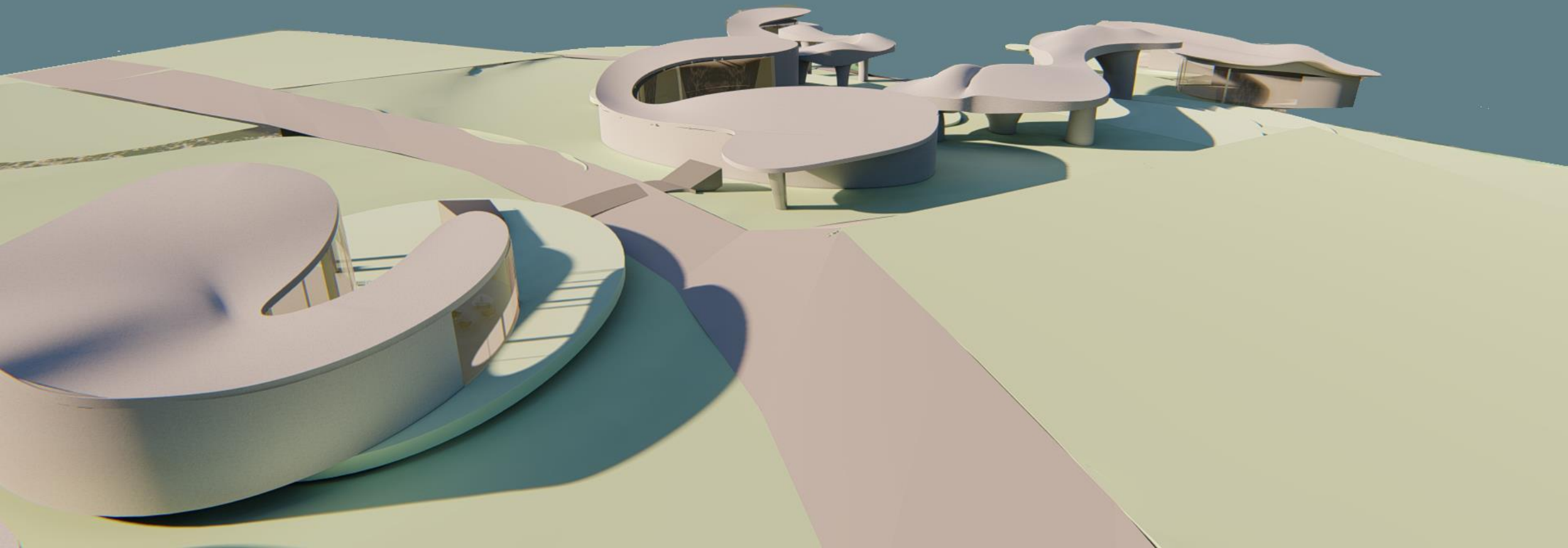
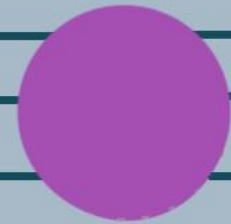


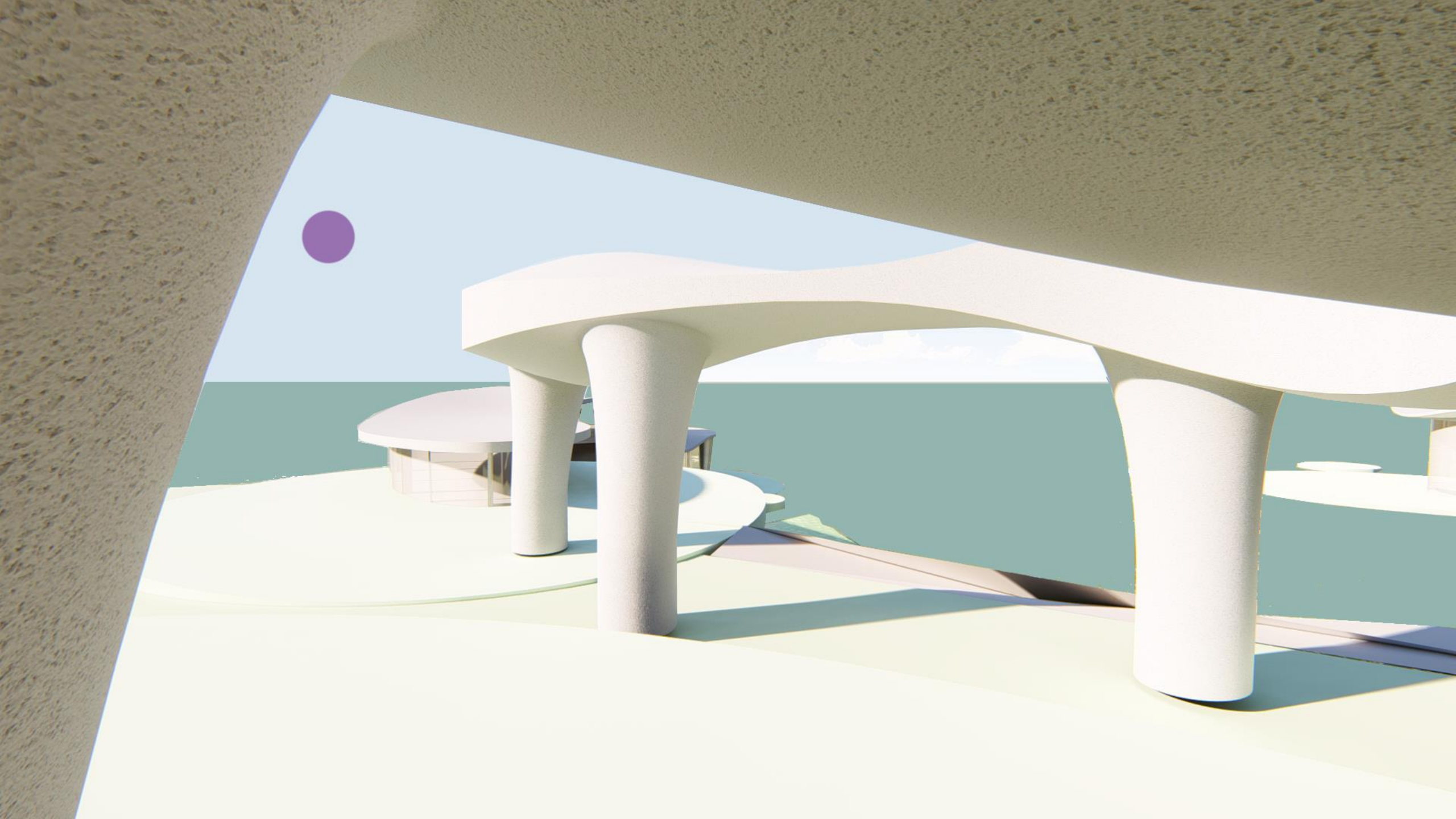


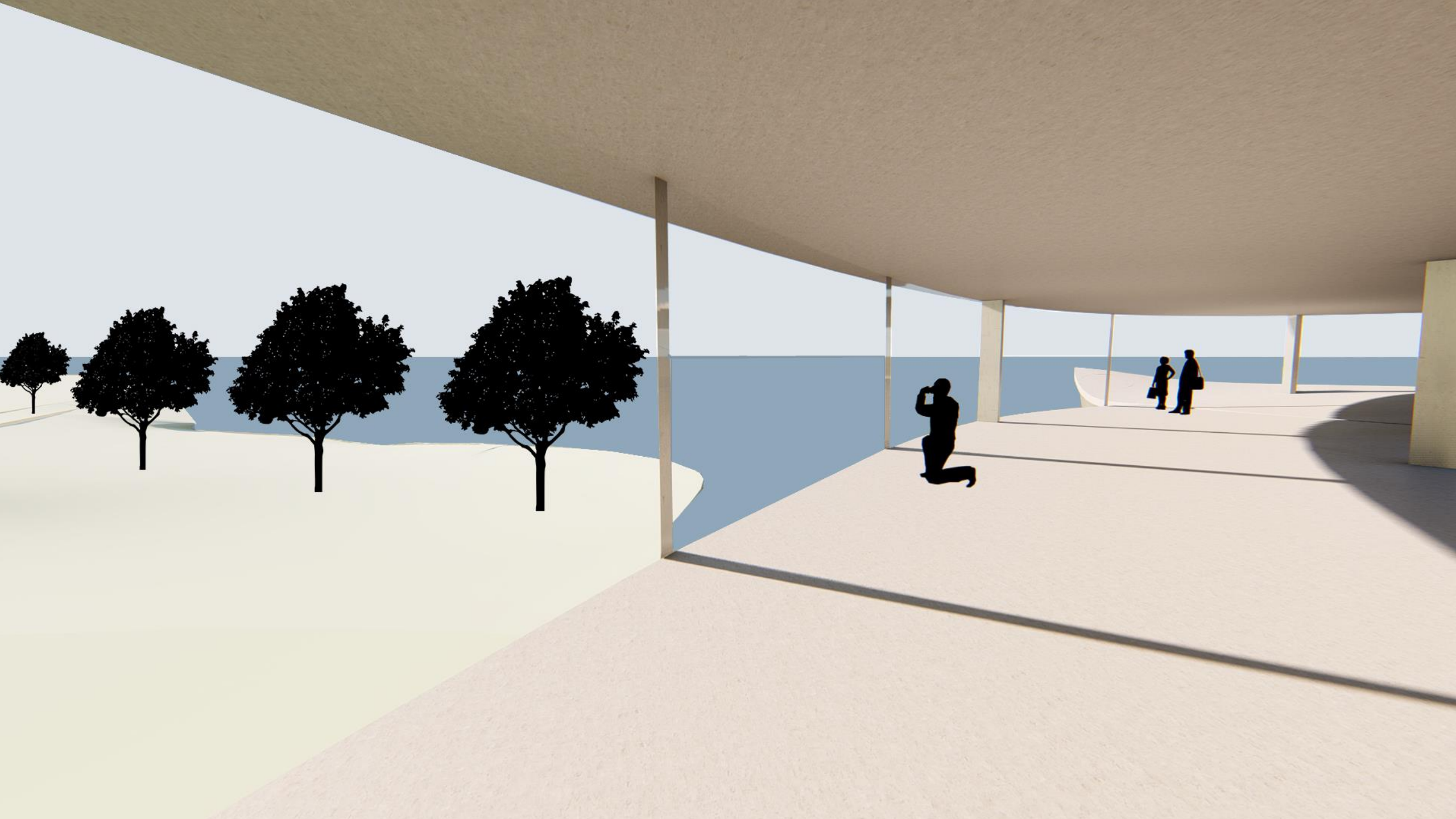
RENDERS

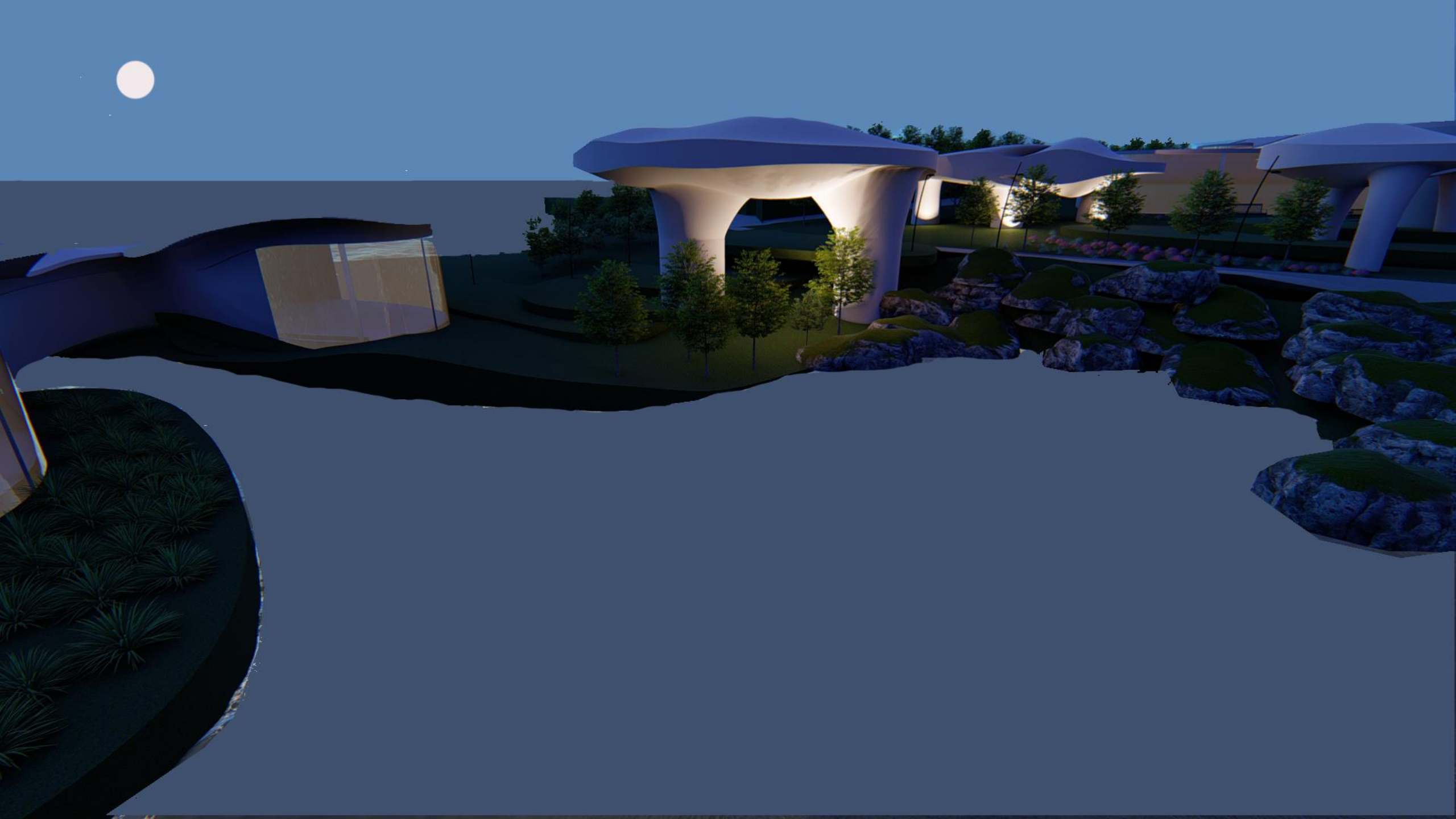


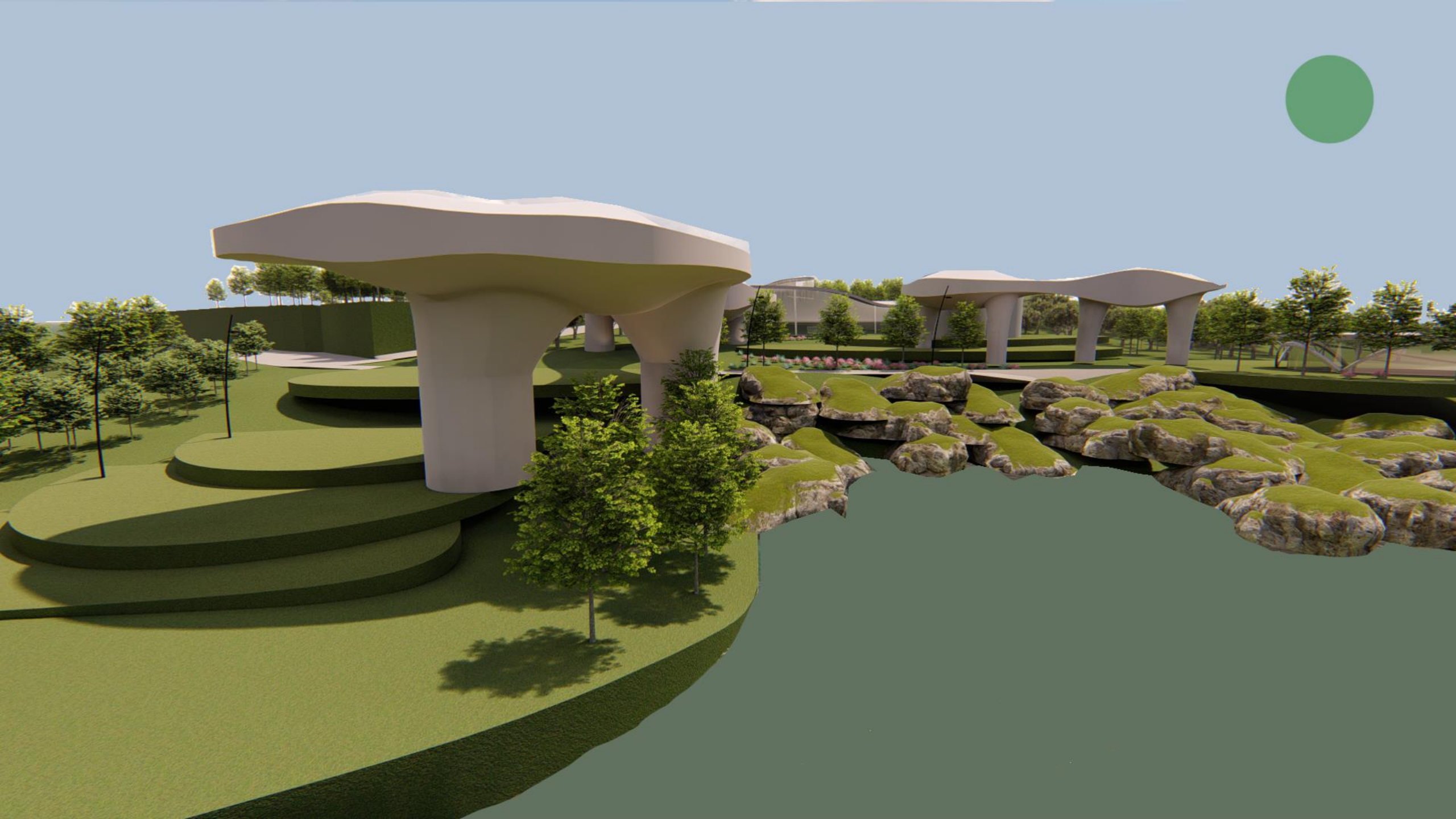


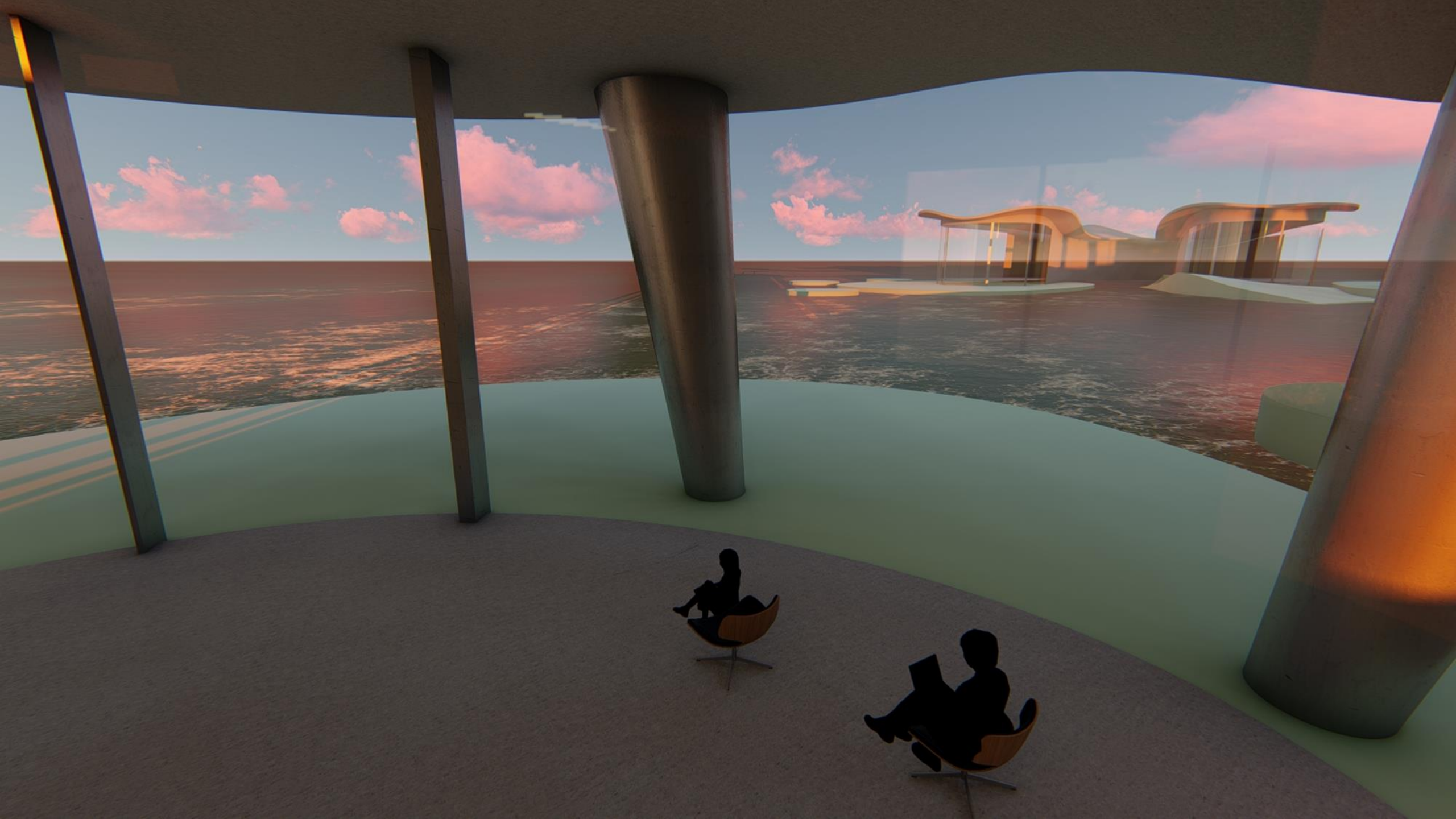












INTERIOR

