



KATTAUNE SOBHANI

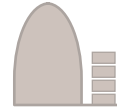
KATTAUNE SOBHANI

kattaune@gmail.com
sobhani@email.arizona.edu

425-803-5288

kattaune.com

Bachelor of Architecture
May 2014 University of Arizona College of architecture



Capstone Project

Barrio Mausoleum



Center for Collaboration

2012



800sqft Villa

2013



House of Writing

2013



Material + Furniture

2013



Various Art





Barrio Mausoleum

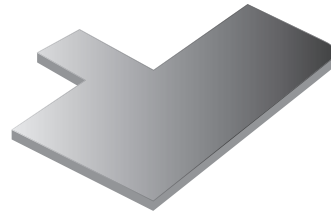




I chose light + metaphor as my capstone because I wanted to understand how to design spaces that combine function with the effects of light and what it can represent.

I specifically chose the mausoleum as my capstone project because I found it challenging to come up with a design that primary function what to embrace the human psychology when its at its most fragile state. At the same time the design had to serve practical needs related to burial services. Creative use of light and metaphor were key to a successful design.

My position is that the design manipulates light and material to create fluid connections between: the living and the dead, the neighborhood and the site, the user through spaces, the program with material and lastly the unknown through metaphor



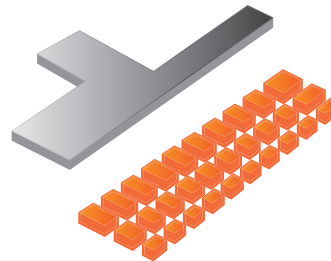
Barrio street front set back is pushed back and replaced with vegetation to create a open area for the community



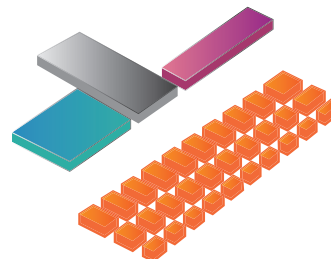
Returning the huma body to the earth and creating a realm for the dead.



Rammed earth is used for the underlying structure. This material was selected to symbolize the return of the body to the earth after ones death. Rammed earth is known to have structural limitations in the length it can span, there for the ceiling of the structure is supported with catenary arches carving through the earth, creating mass to place the dead and voids for the living. - This design also influences the structural grid



To connect the bodies placed in the earth with the heavens above, a lightwell is placed at every intersection of the catenary arch (where to paths of the vault meet) allowing light to enter the underground structure.

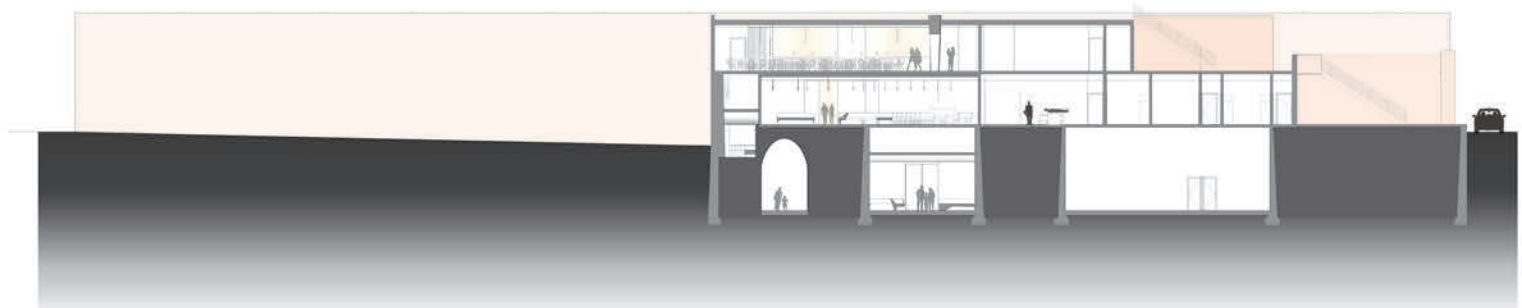
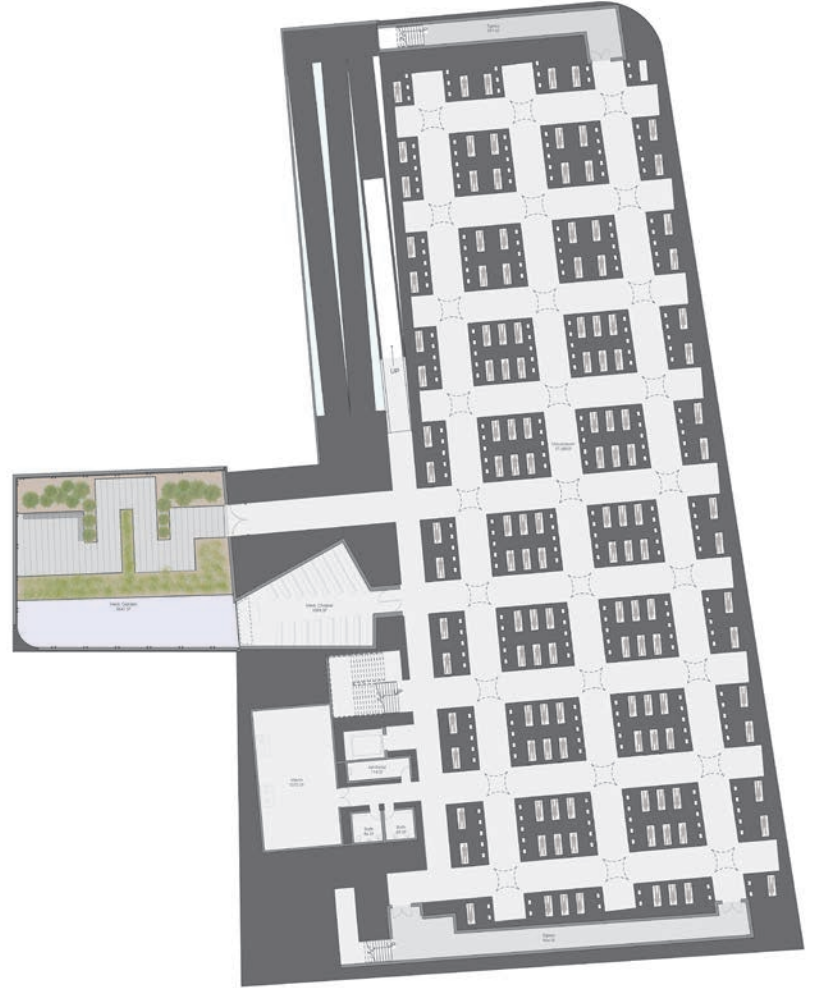


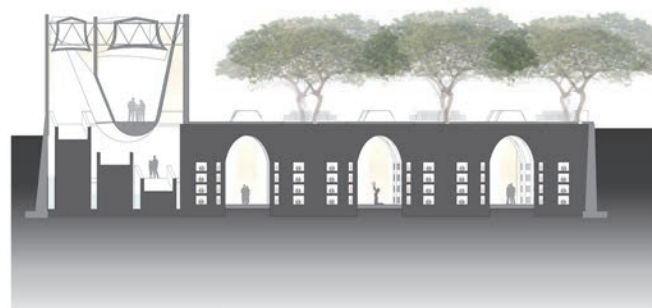
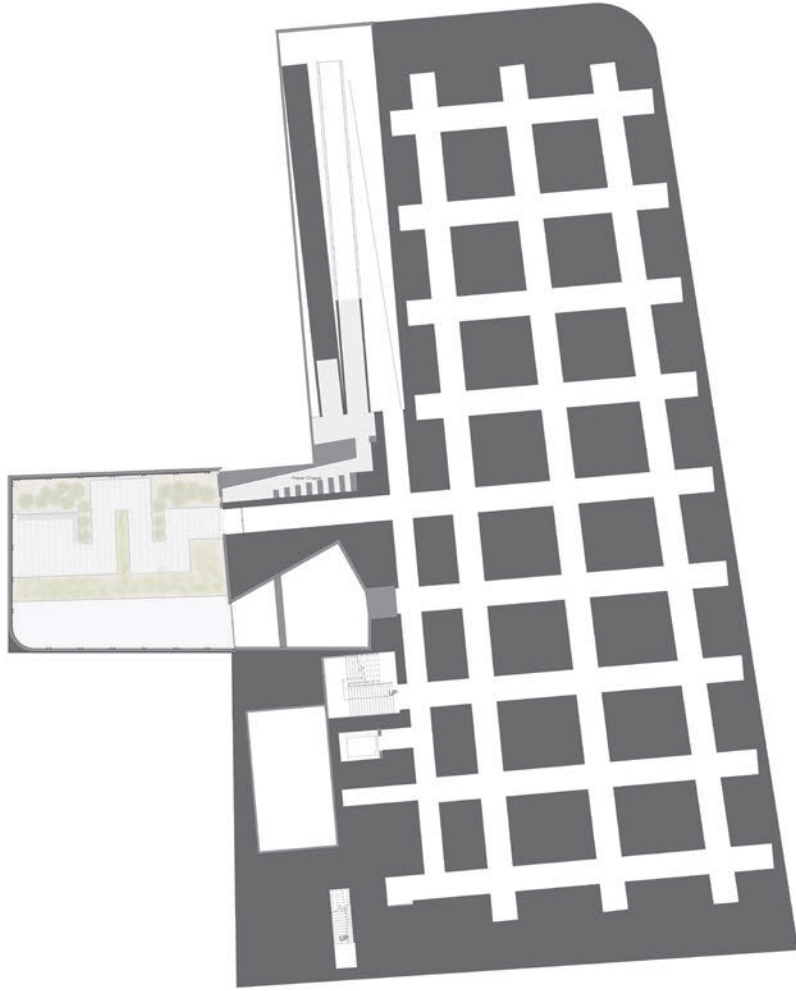
Here you begin to see how the use of rammed earth catenary vaults begin to dictate the structural grid. And how the slight tapering to the grid is so that the vegetation that occurs at the intersection of the grid, is mostly uniform, within the scope of 30'x30' measurement

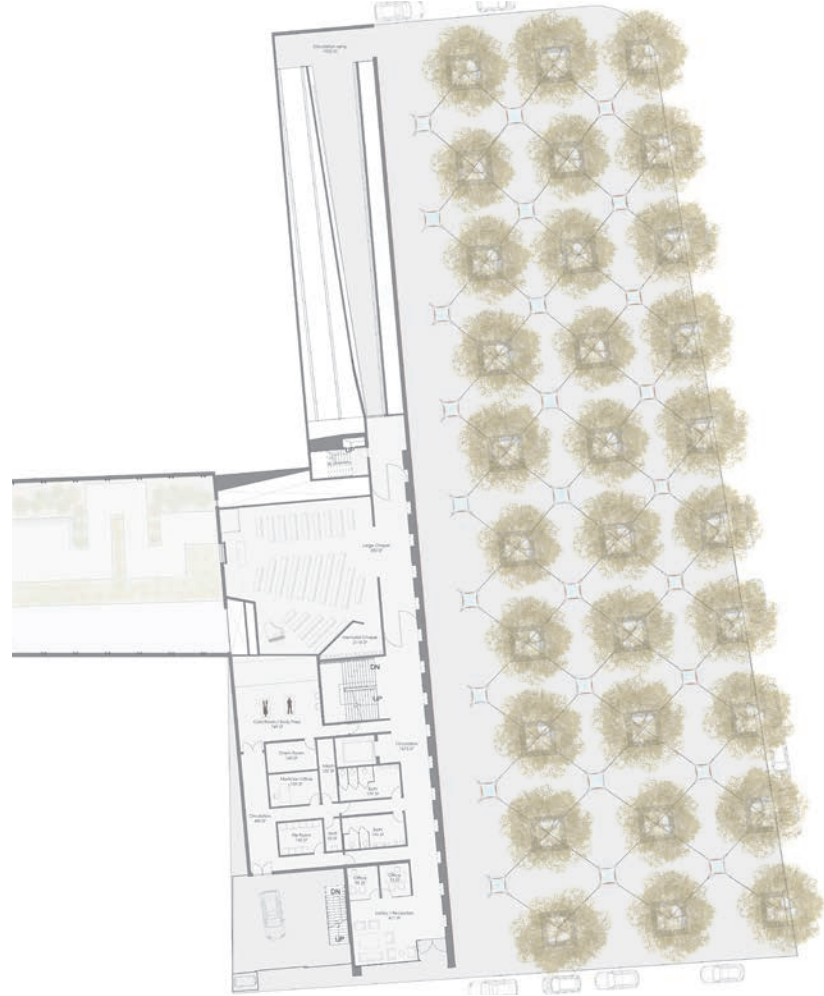
TABULATION + PROGRAM

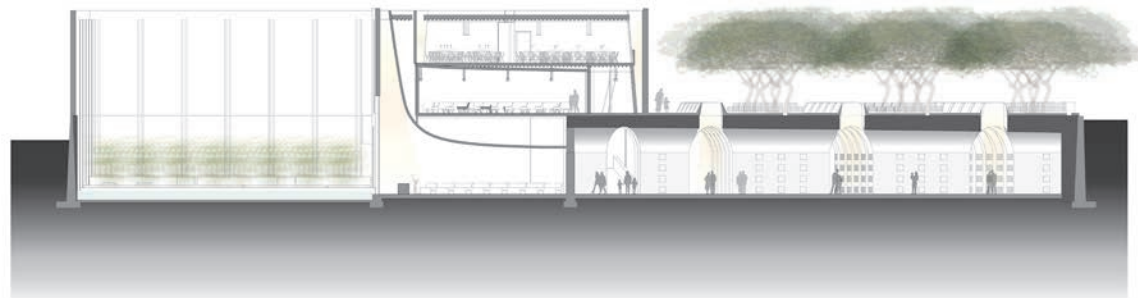
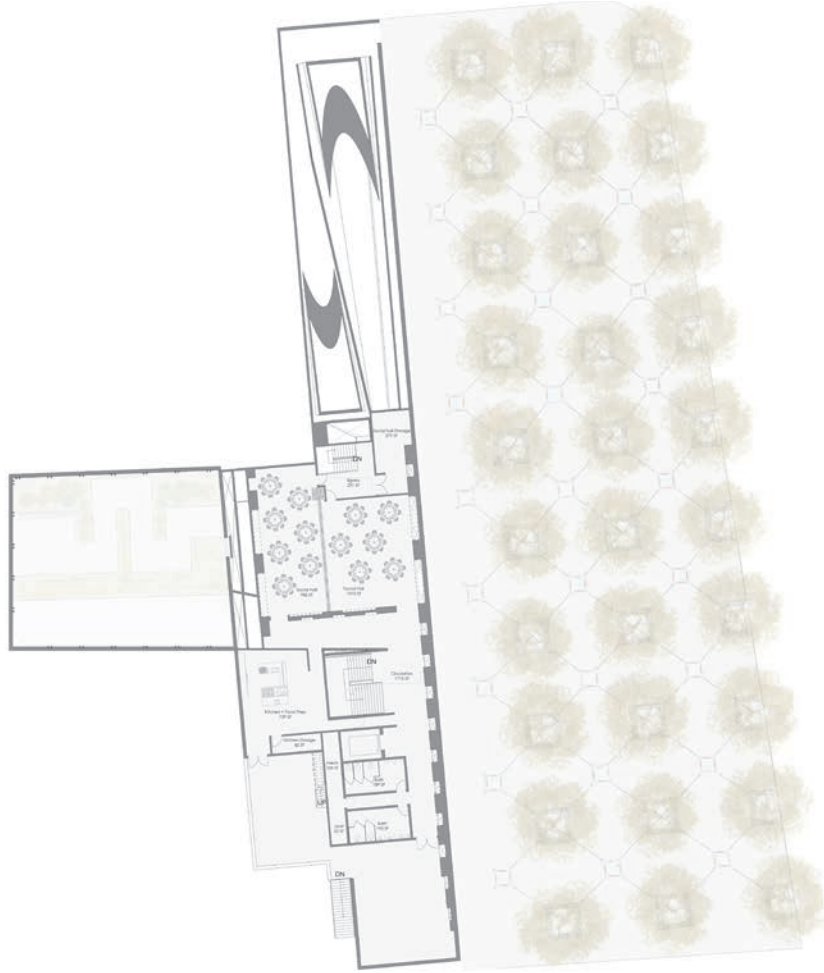
LEVEL	NAME	AREA
Level -1	Mausoleum	27,080 SF
Level -1	Chapel	1,333 SF
Level -1	Bathroom	65 SF
Level -1	Janitorial	111 SF
Level -1	Storage	195 SF
Level -1	Mech	1009 SF
Level -1	Egress	806 SF
Level -1	Egress	532 SF
Level -1	Circulation	2,535 SF
Level -1	Meditation Garden	3,641 SF
Level -1	Elevator	100 SF
Level -.5	Small Chapel	515 SF
Level 1	Cold room	580 SF
Level 1	Bathroom	175 SF
Level 1	Janitorial	50 SF
Level 1	Chemical closet	149 SF
Level 1	Bathroom	170 SF
Level 1	Body preperation	719 SF
Level 1	Office	87 SF
Level 1	Office	87 SF
Level 1	Lobby	326 SF
Level 1	Gathering	1,342 SF
Level 1	Circulation	1,951 SF
Level 1	Office	153 SF
Level 1	Circulation ramp	3,626 SF
Level 1	Circulation	504 SF
Level 2	Bathroom	167 SF
Level 2	Bathroom	172 SF
Level 2	Kitchen	412 SF
Level 2	Storage	251 SF
Level 2	Circulation	1,394 SF
Level 2	Social Hall	1,808 SF
Level 2	Conversation space	1039 SF
Level 2	Egress	1,250 SF
Level 2	Elevator	105 SF















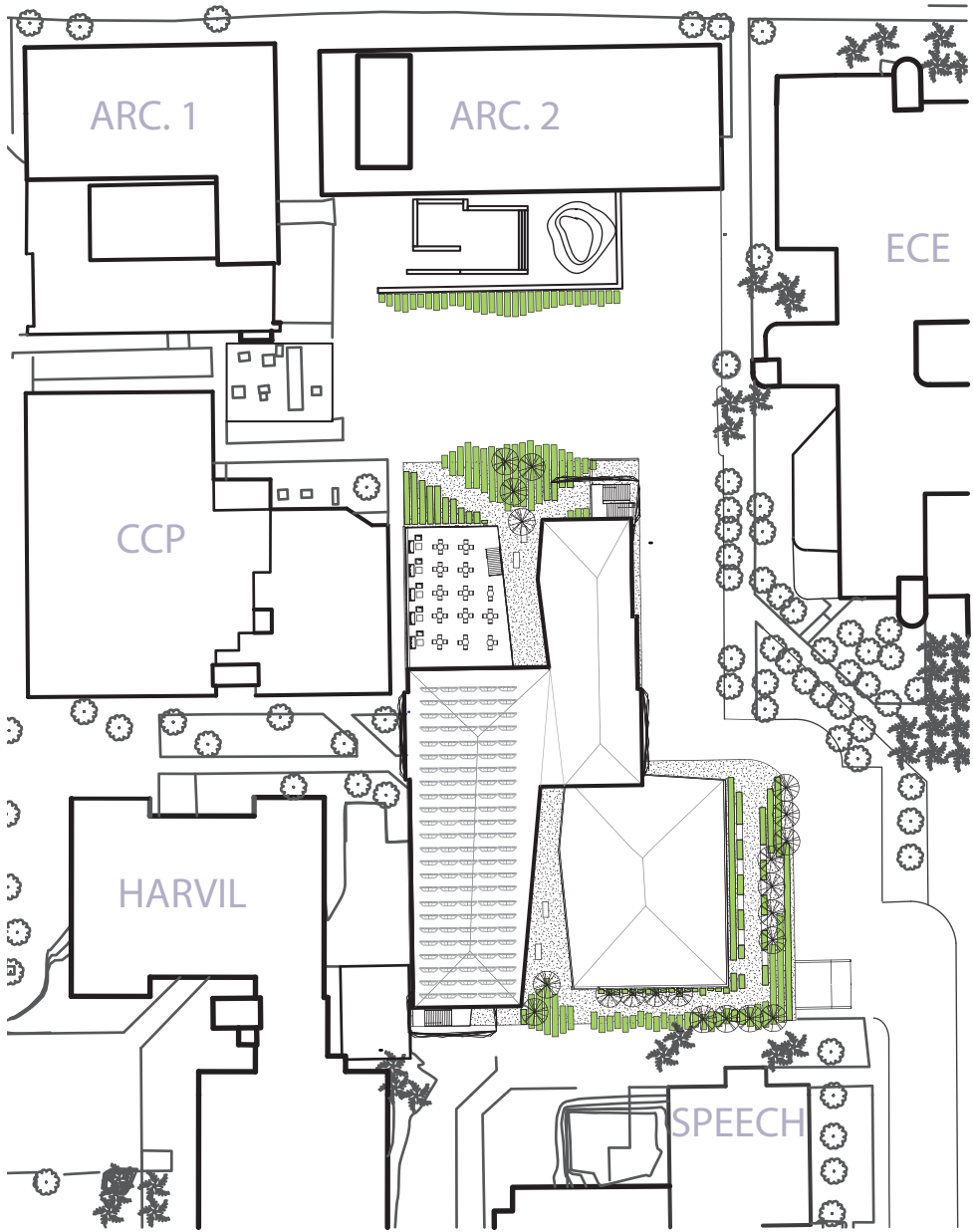




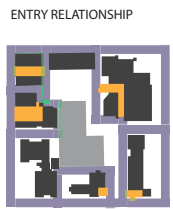
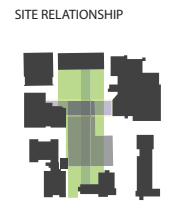
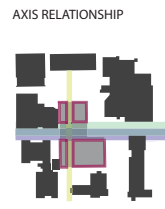
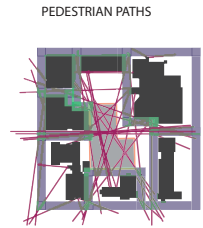
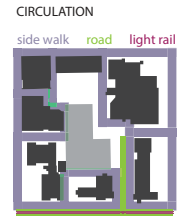
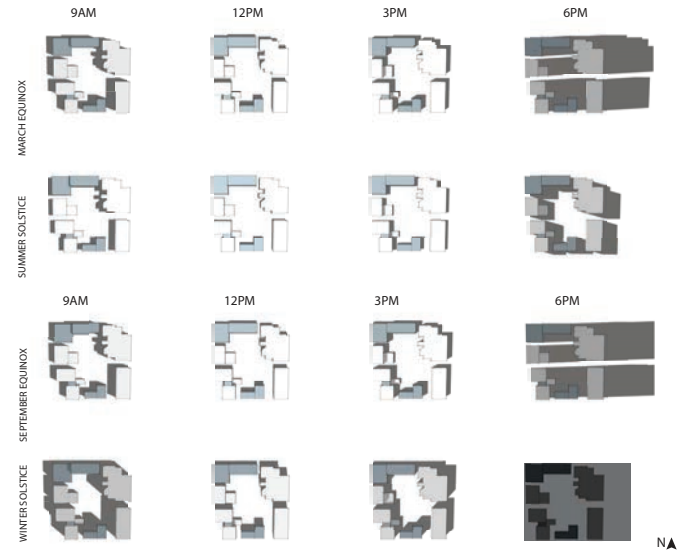
The Center for Information and Collaboration

The Center for Information and Collaboration is intended to foster the coexistence, interaction, collaboration, and synergy of a diverse user group. This includes architects, engineers, musicians, art performers, practitioners, students, faculty, visitors, and others. To serve this mission, the building program is organized in support of the existing N-S and E-W axes crossing the site. Public spaces such as the open study room, the lobby, and the gallery are collinearly placed along those axes.

Site plan



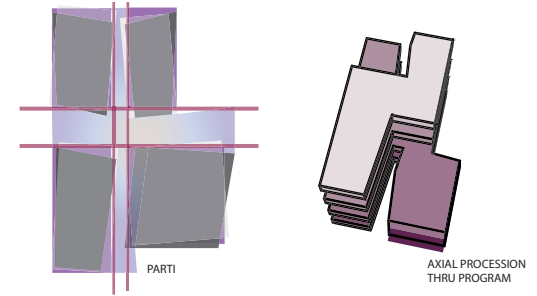
Analysis



Parti

The focus of the program on the two main axes, applies a "pull" to visitors, who naturally approach the building from either the N-S or E-W direction, due to the site orientation. Visitors are guided through the axes to the public spaces, thus promoting circulation and convergence, collaboration and synergy. Circulation is further driven by the striation, which provides rhythm to the building, enhances the building

form by creating moments of exterior spaces and guides users to the public spaces. The public/private gradient is maintained at all floors of the building. While some floors house more private spaces than others (e.g., the second and third floor compared with the first floor), public spaces are always arranged closer to the axes.



Area	Area	Count	Area
Library Reference	1,800	1	1,800
Gallery	1,800	1	1,800
Gallery Private Collections	8,000	1	8,000
Auditorium	6,000	1	6,000
Library Collections	7,000	1	7,000
Community Meeting Room	300	1	300

Open Study Area	4,000	1	4,000
Study Carrels	70	40	2,800

Large Meet Room	400	1	400
Medium Meet Room	200	1	200
Large Study Room (L2/L3)	200	10	2,000
Small Study Room (L2/L3)	70	100	7,000
Conference Room	200	1	200
Meeting Faculty Office	100	6	600
Book Processing Lab	100	1	100
Music rehearsal Room	100	1	100

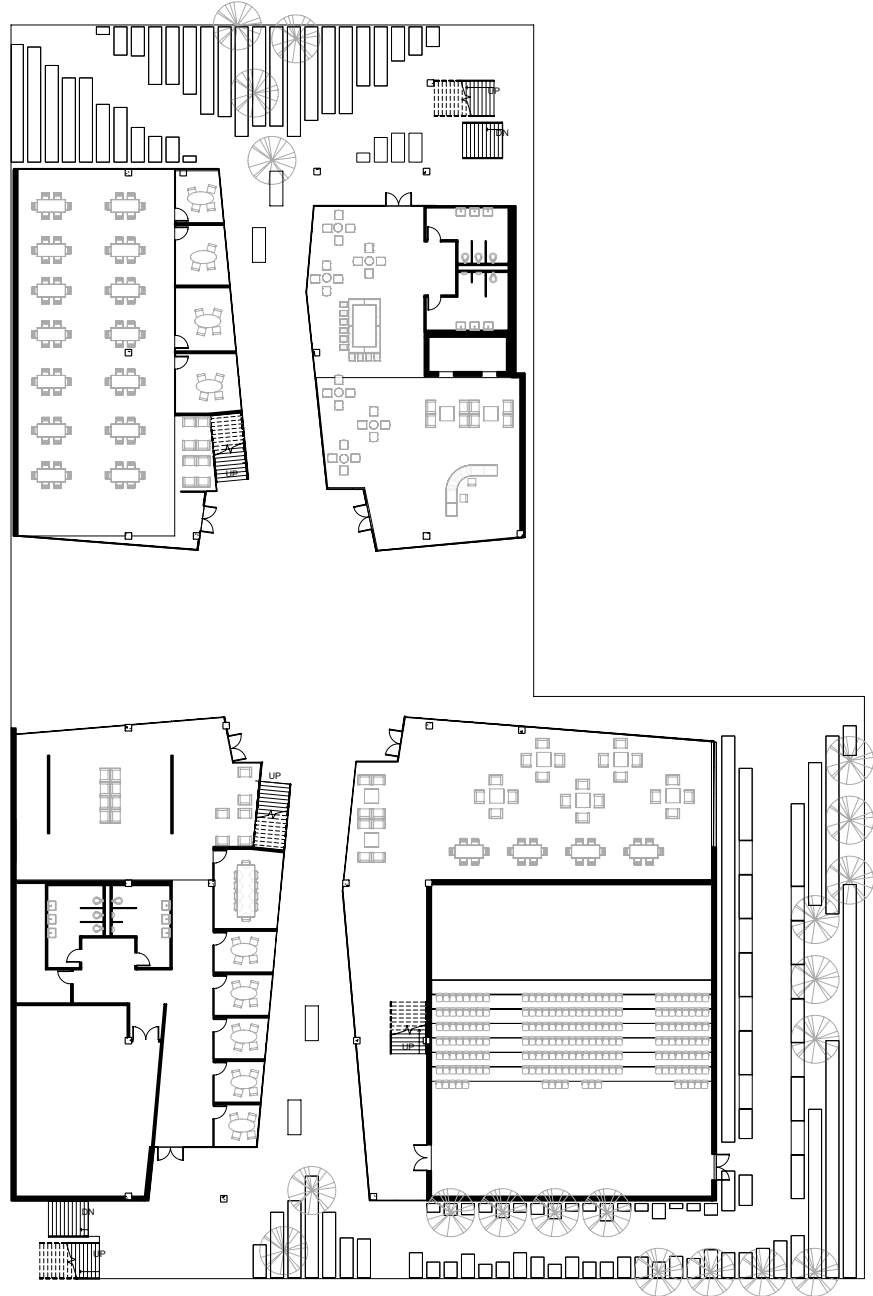
Breakout	100	1	100
Coffee	100	1	100
IT	100	1	100
Storage	100	1	100
Garage	100	1	100
Administrative Office	1,400	1	1,400

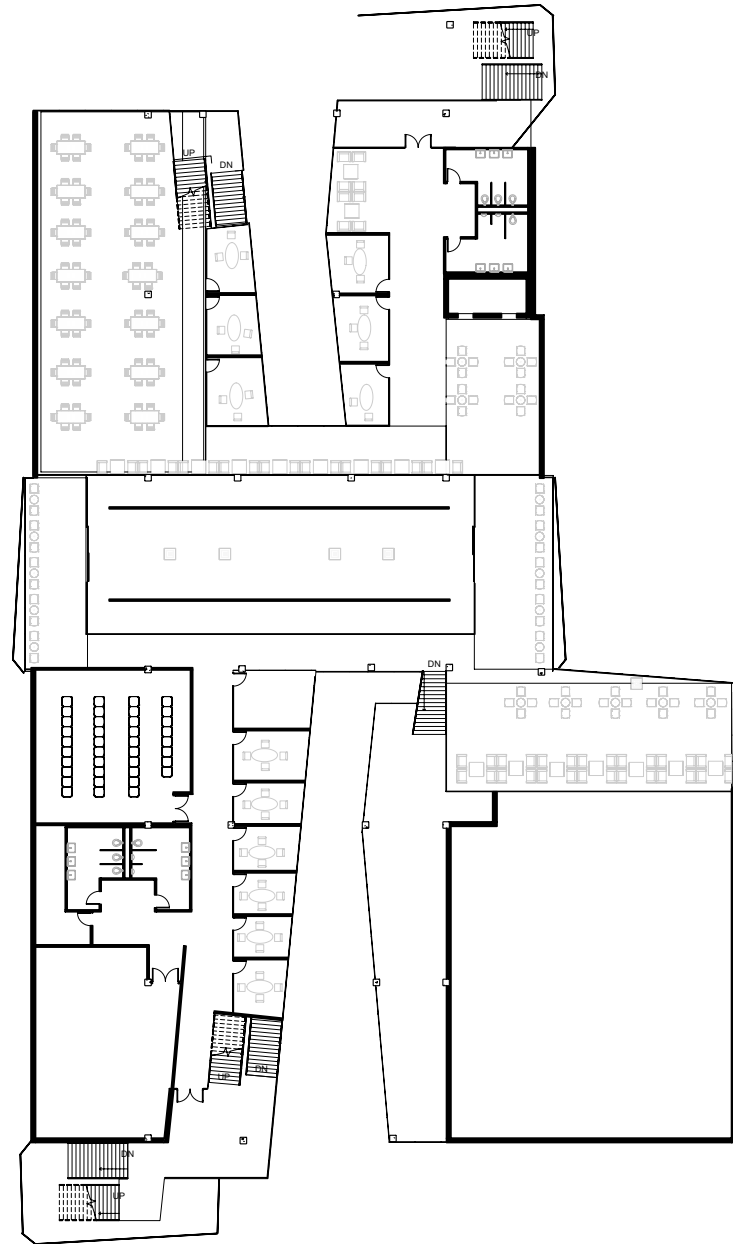
Public Stair	300	1	300
Public Restrooms	300	1	300
Cafe/Collection	300	1	300
General Meeting Area	300	1	300
Reception	1,400	1	1,400
Vertical Storage	100	1	100
Elevator	100	1	100
Landings	300	1	300

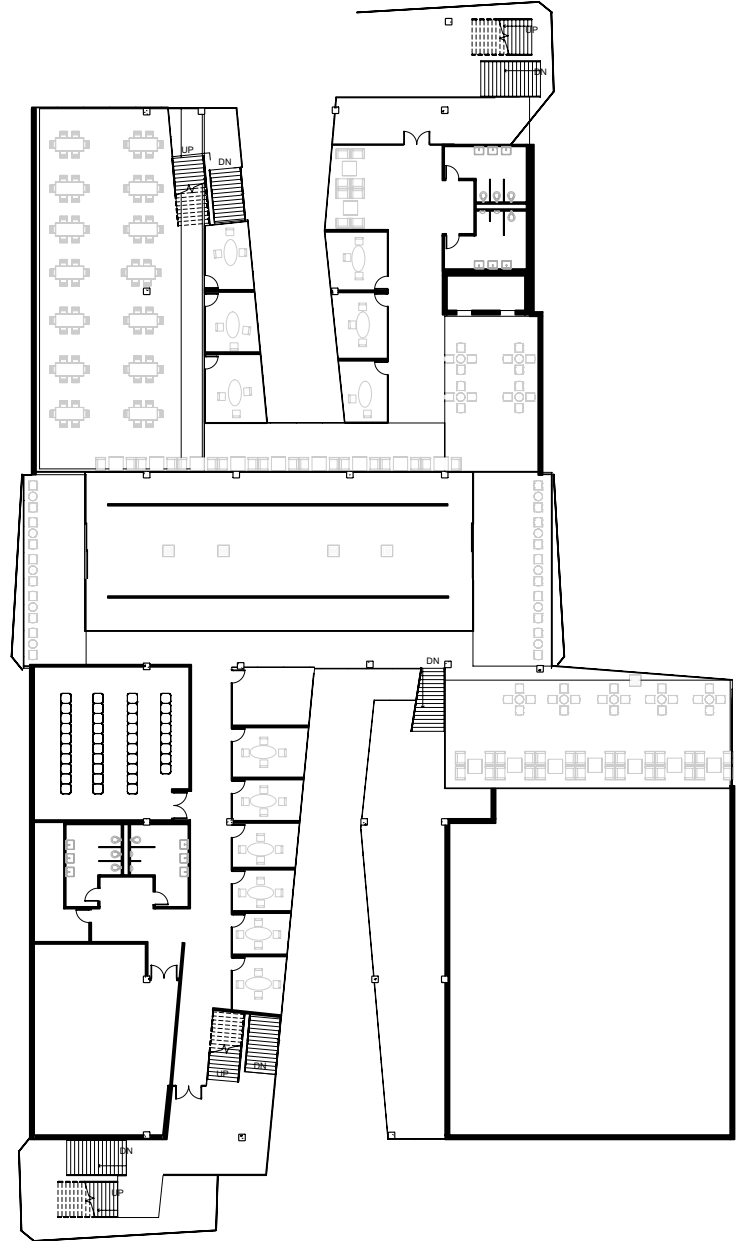
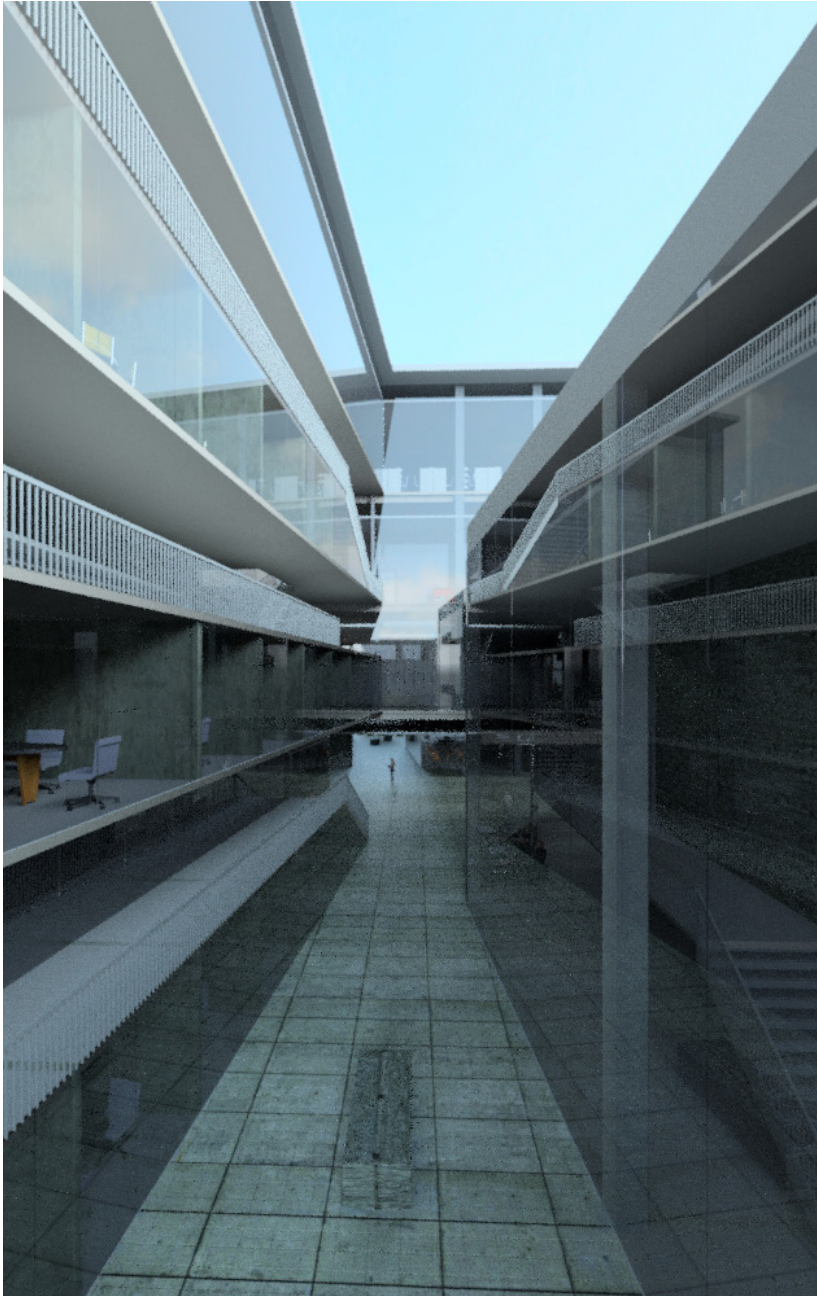
Outdoor Cafe	1,400	1	1,400
Outdoor Terrace	4,400	1	4,400

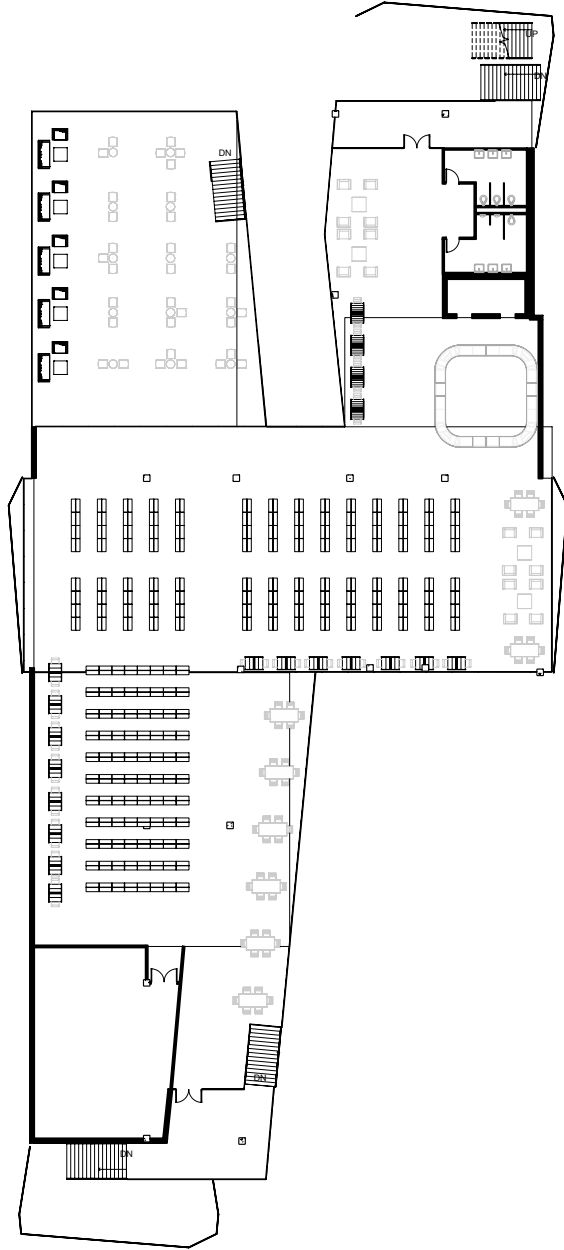
System diagrams

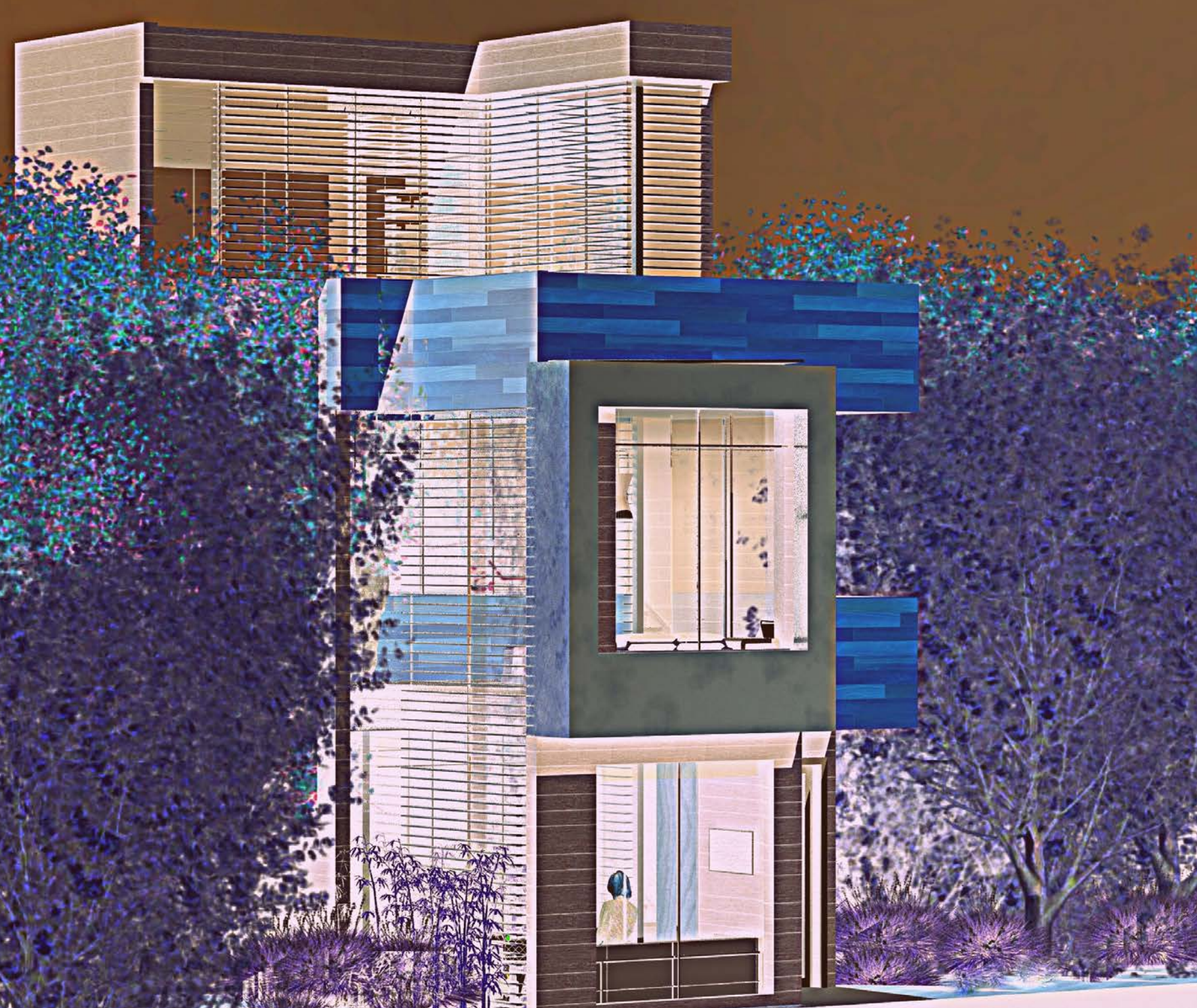


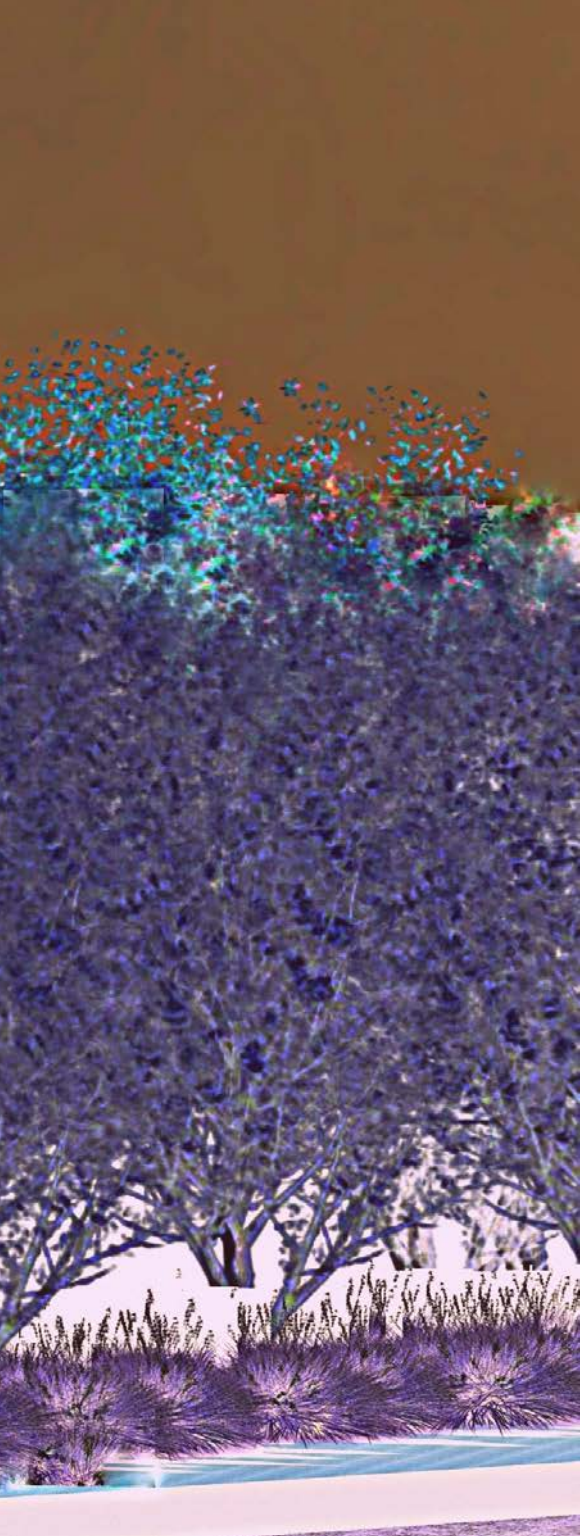












800sqft Villa

A 800sf Villa for an infill lot in Tucson, AZ.

The site is located on the southeast corner of Himmel Park. The Villa is to be designed for year round occupation by a visiting Professor, Researcher or Student to the UA. The villa will be accessed on foot, or bicycle along the southern alleyway.

The villa contains the following:

A place for writing

A place for reading

A place for sleeping

A place for cooking

A place for eating

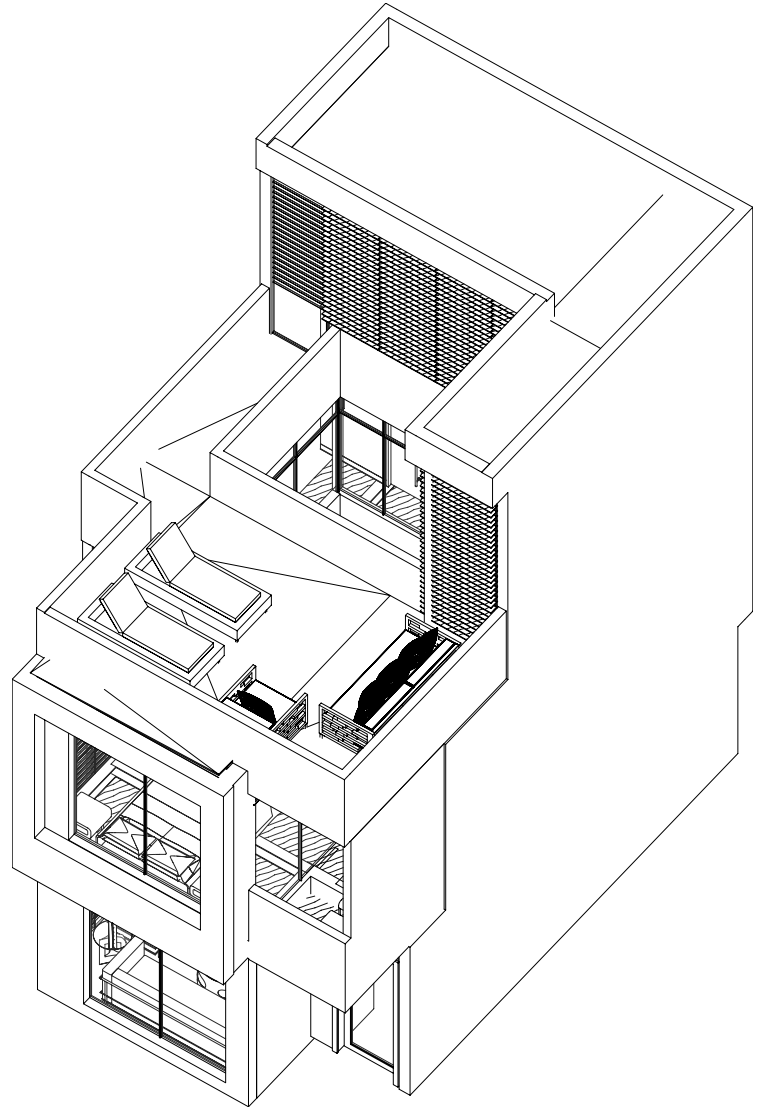
A place for entertaining

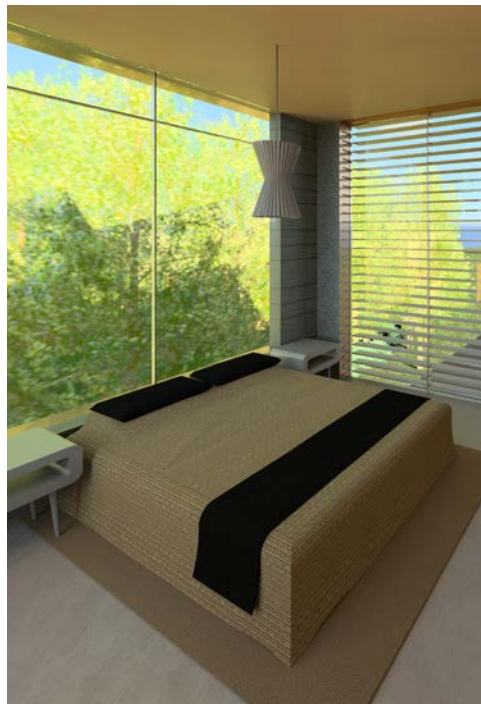
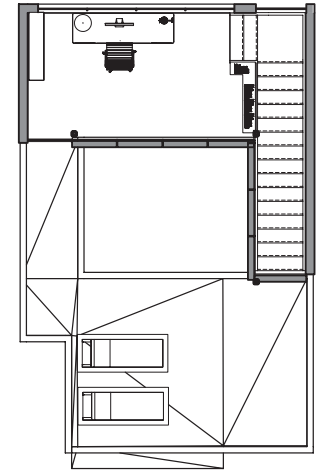
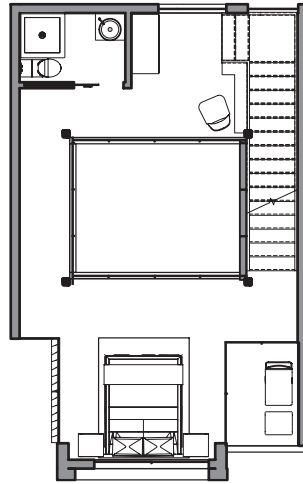
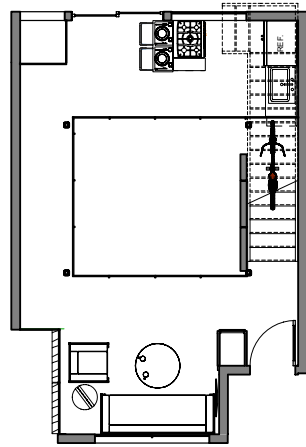
A place for books and storage

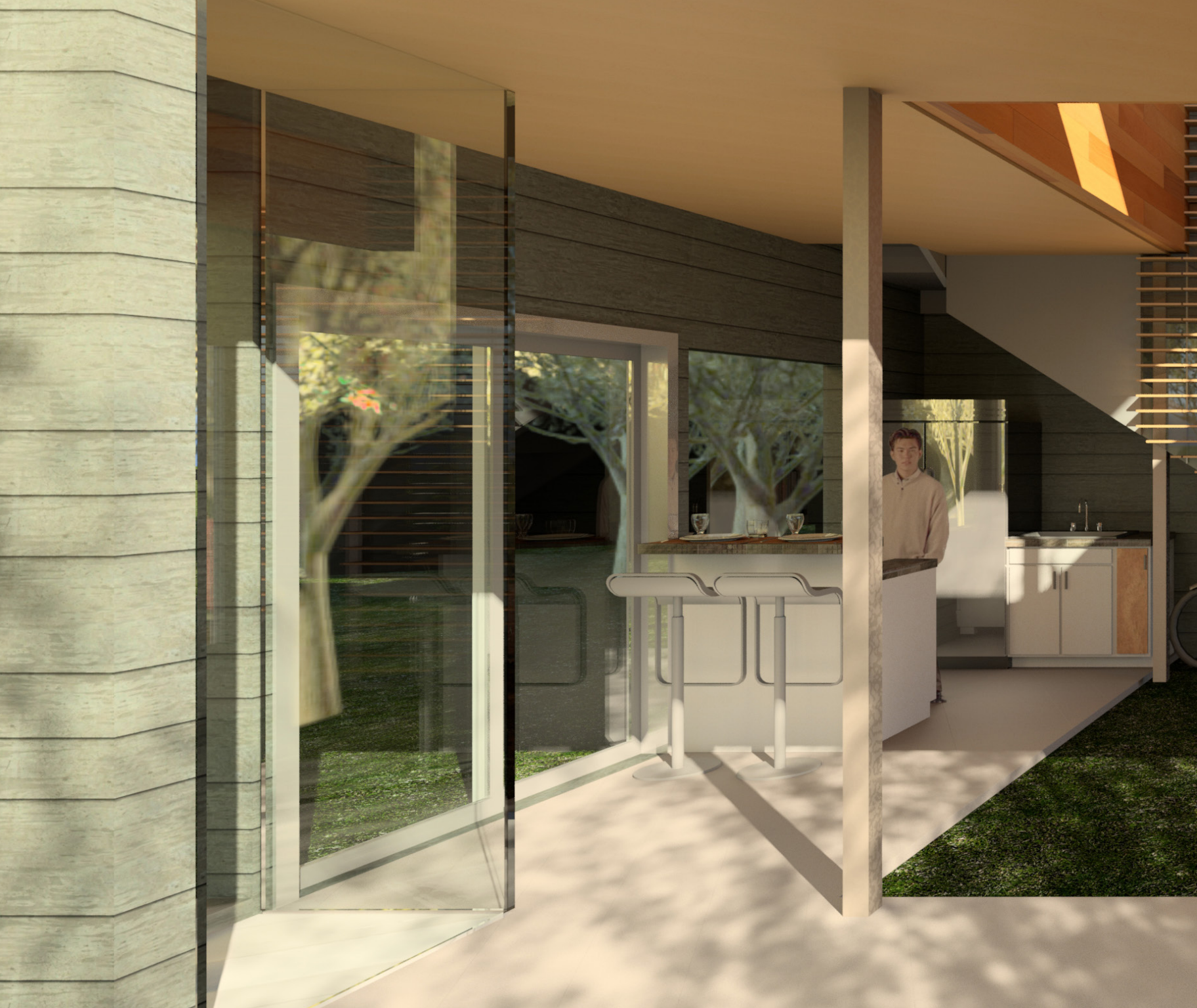
A bathroom to accommodate essential needs

Apertures and openings that define views and privacy

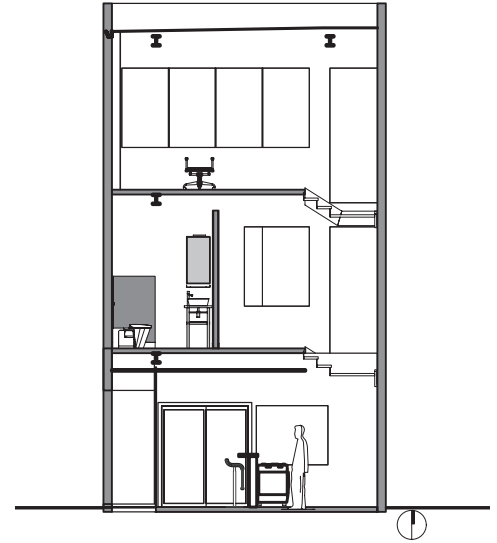
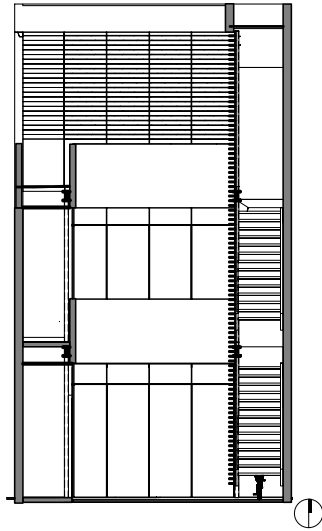
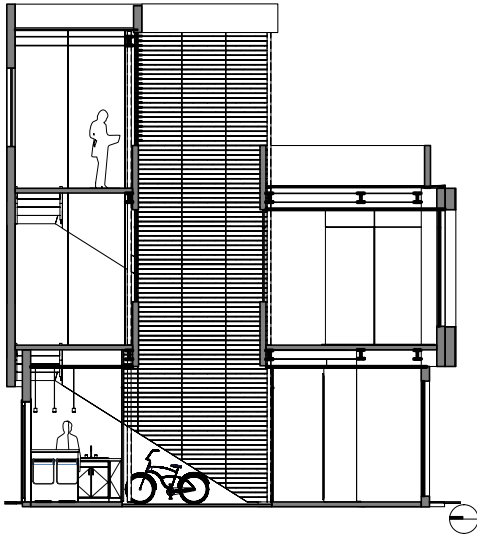
A strategy for directing and collecting rainwater









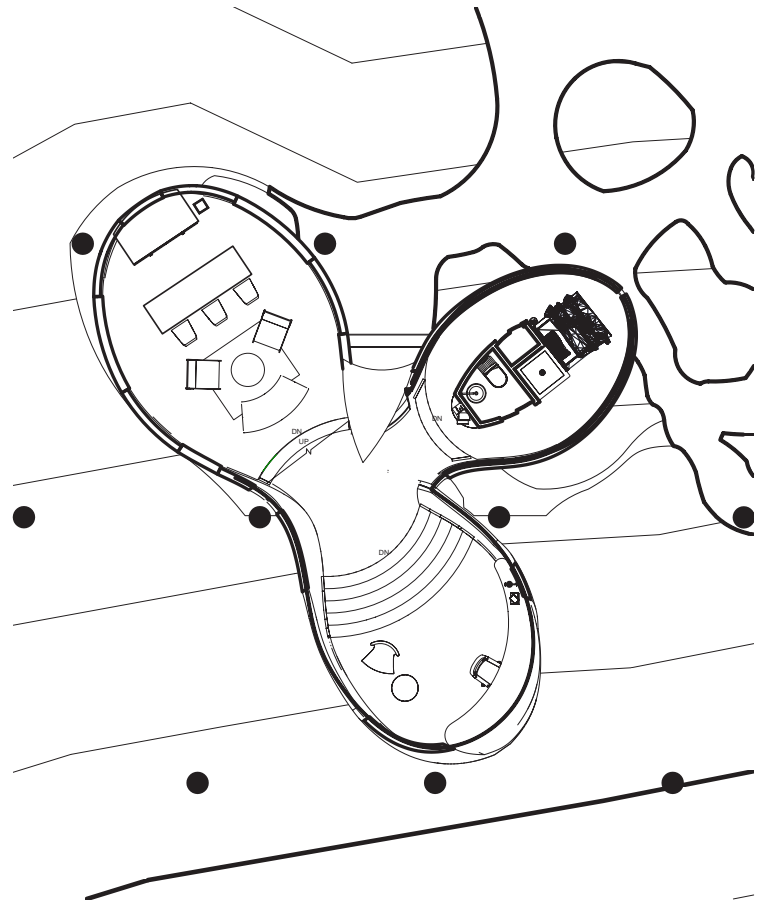
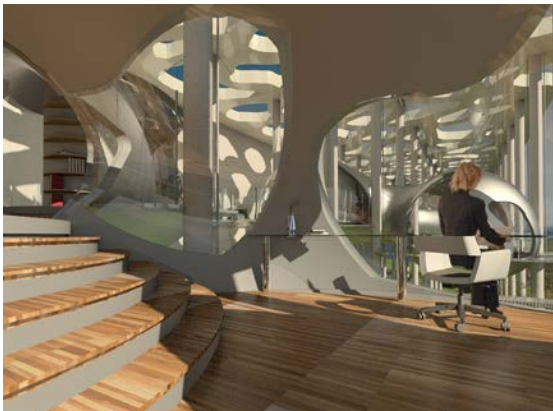
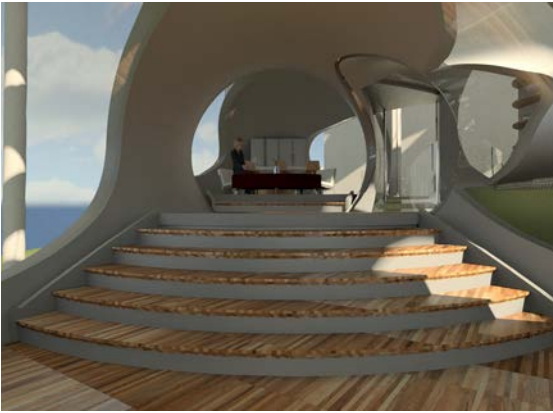




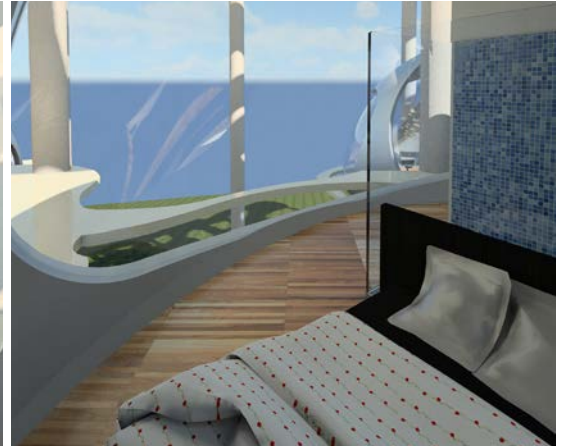
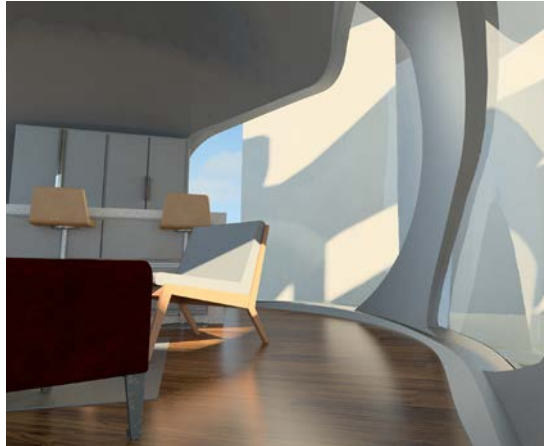
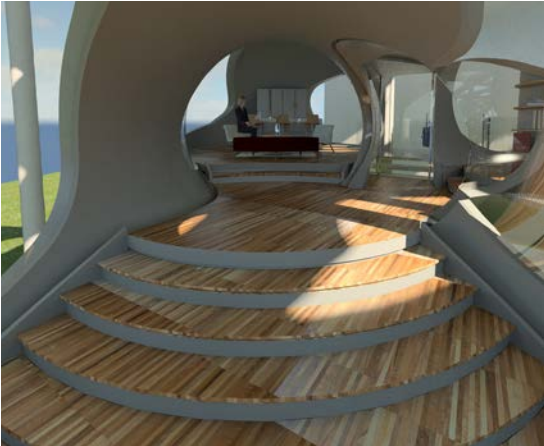
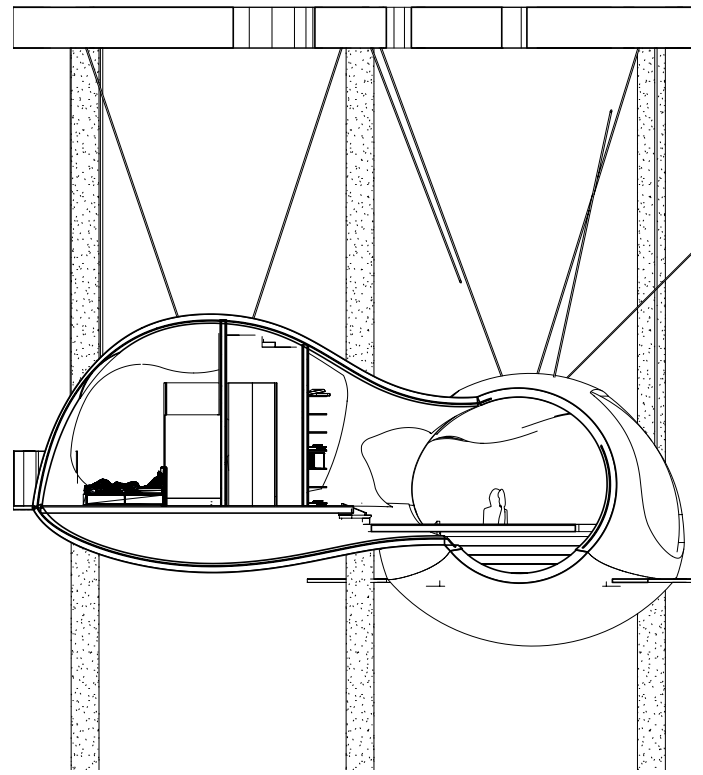
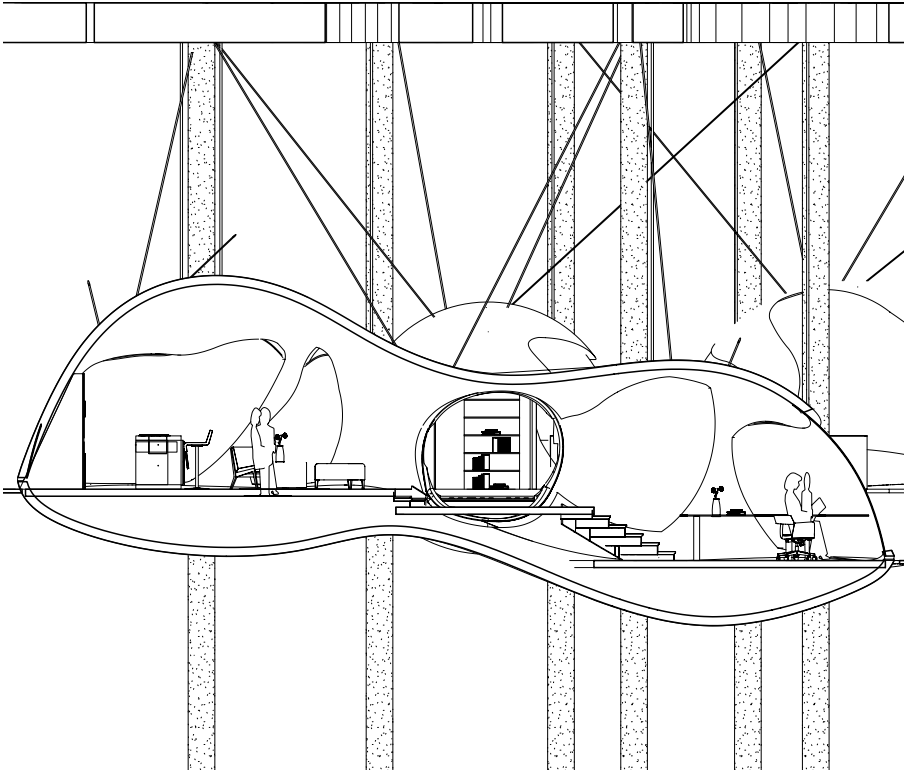


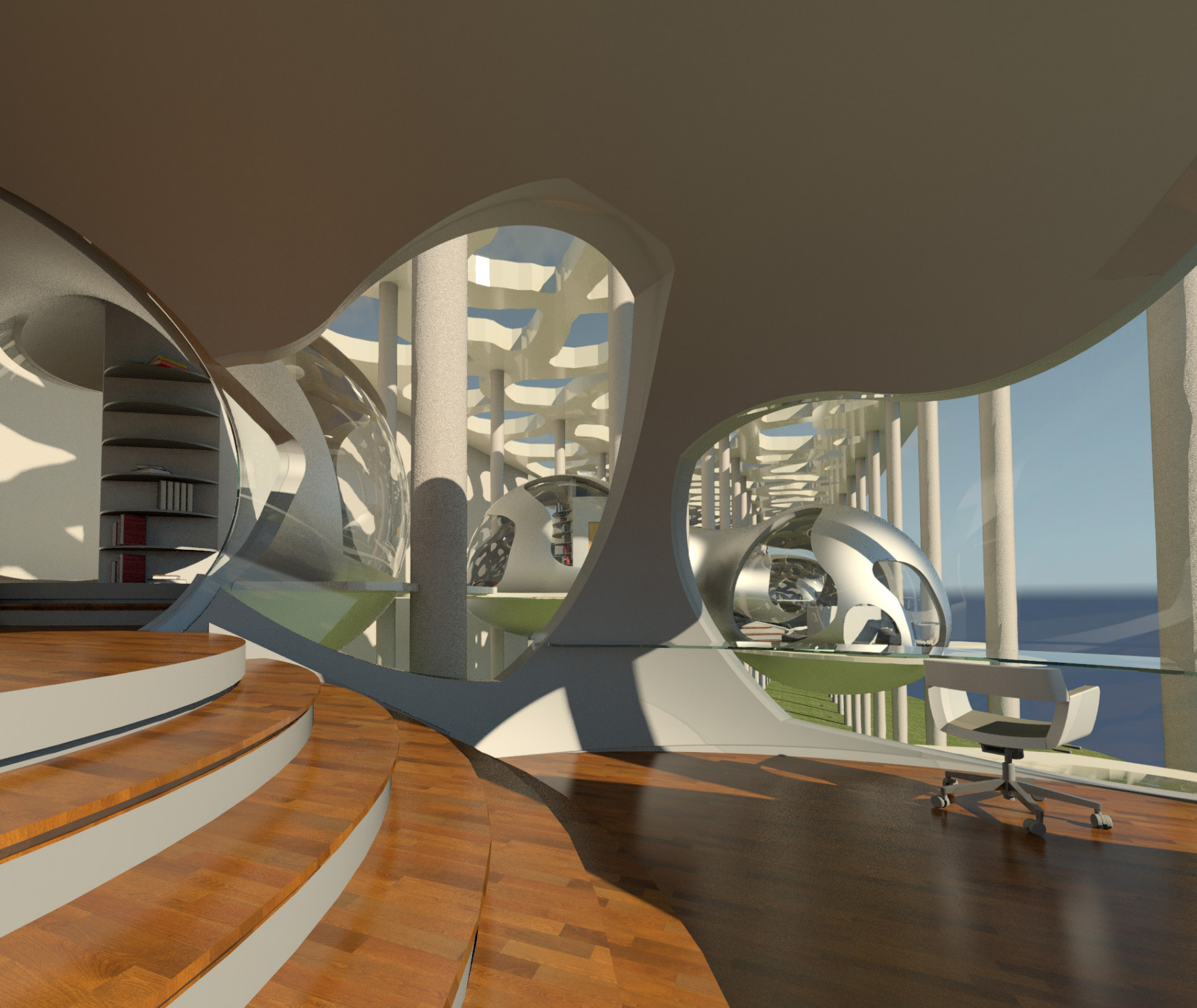
THE HOUSE OF WRITING

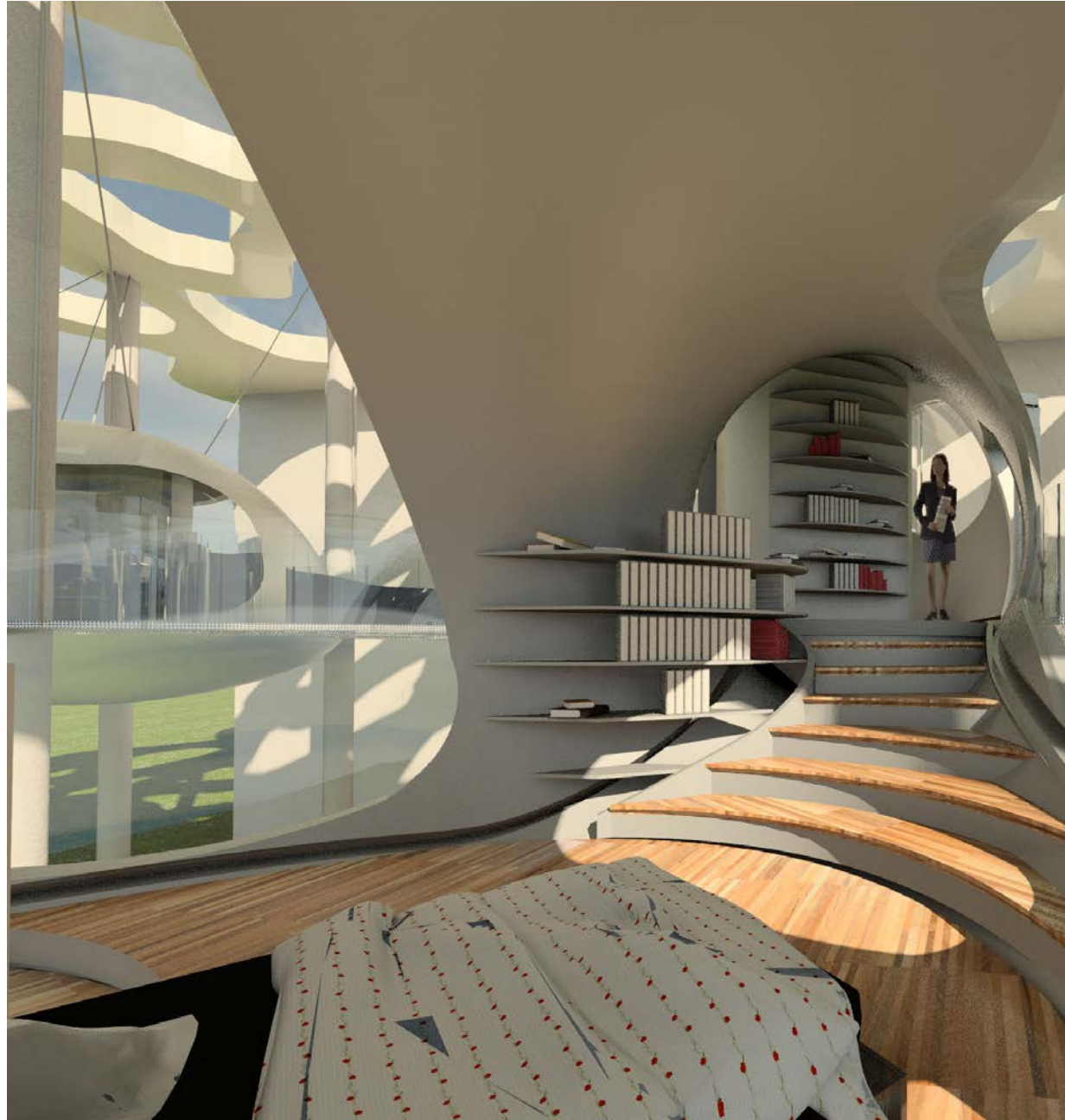
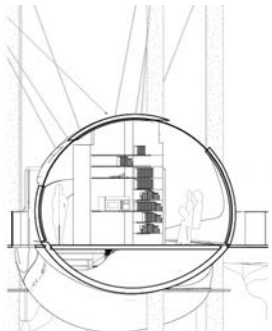
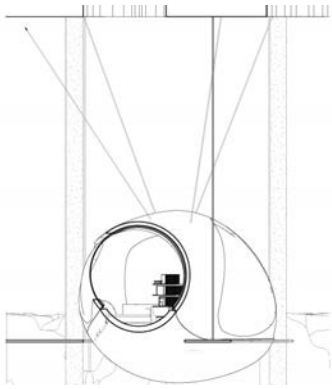
The House of writing



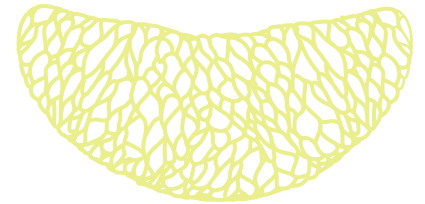
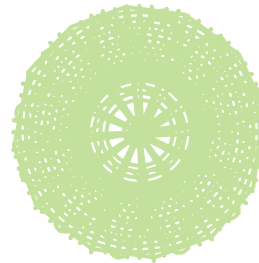
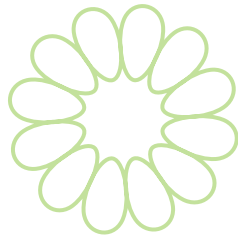
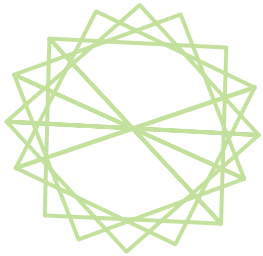
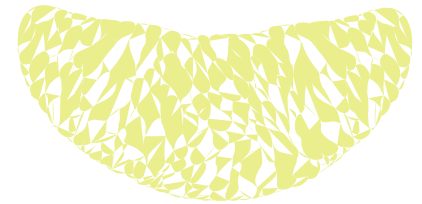
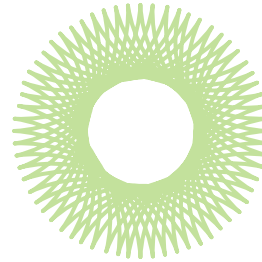
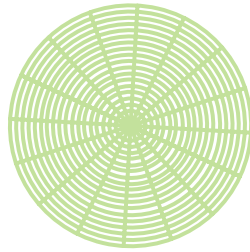
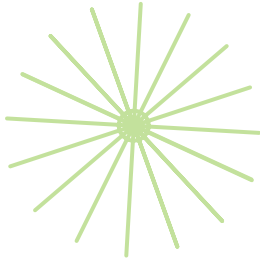
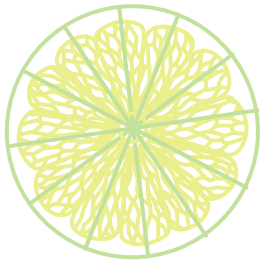










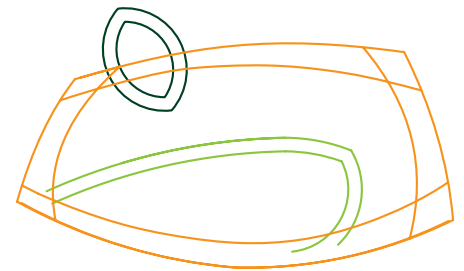
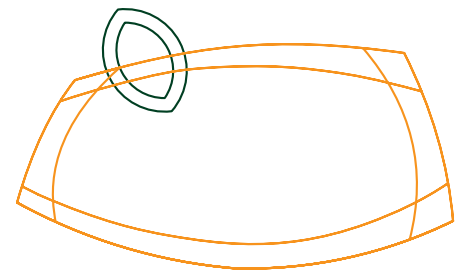
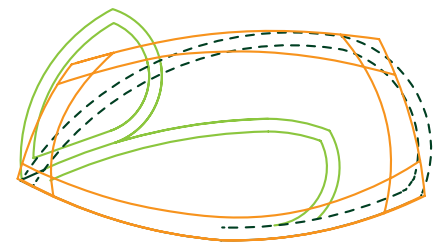


Program

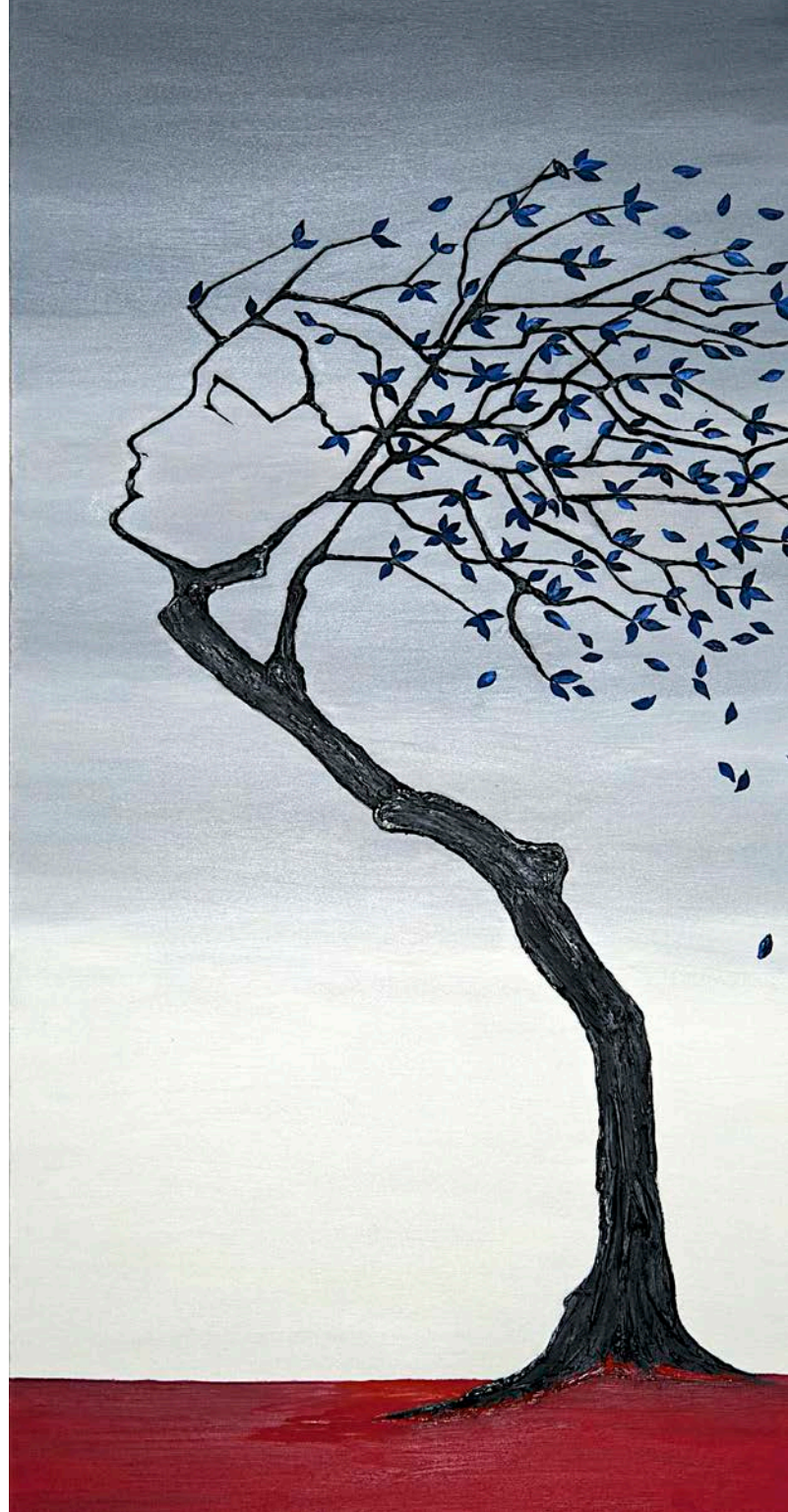
The social chair is intended to engage its user in social interaction within a home environment. The chair is designed with adequate lumbar support that allows its occupant to assume a comfortable upright posture. However, it does not provide upper back or headrest support which are typical for ergonomic chairs designed for deep resting. The design goal is to accommodate the need for expression through free motion that occurs when the user is engaged in a casual conversation. The seat reacts to the user's motions by implementing a springing action that adjusts to shifting weight. The chair's height is low enough to situate the user closer to the ground but high enough to avoid excess knee bending. The seat depth and width are selected to allow the user rest its lower back while still having some room from his/her knees to the end of the seat.



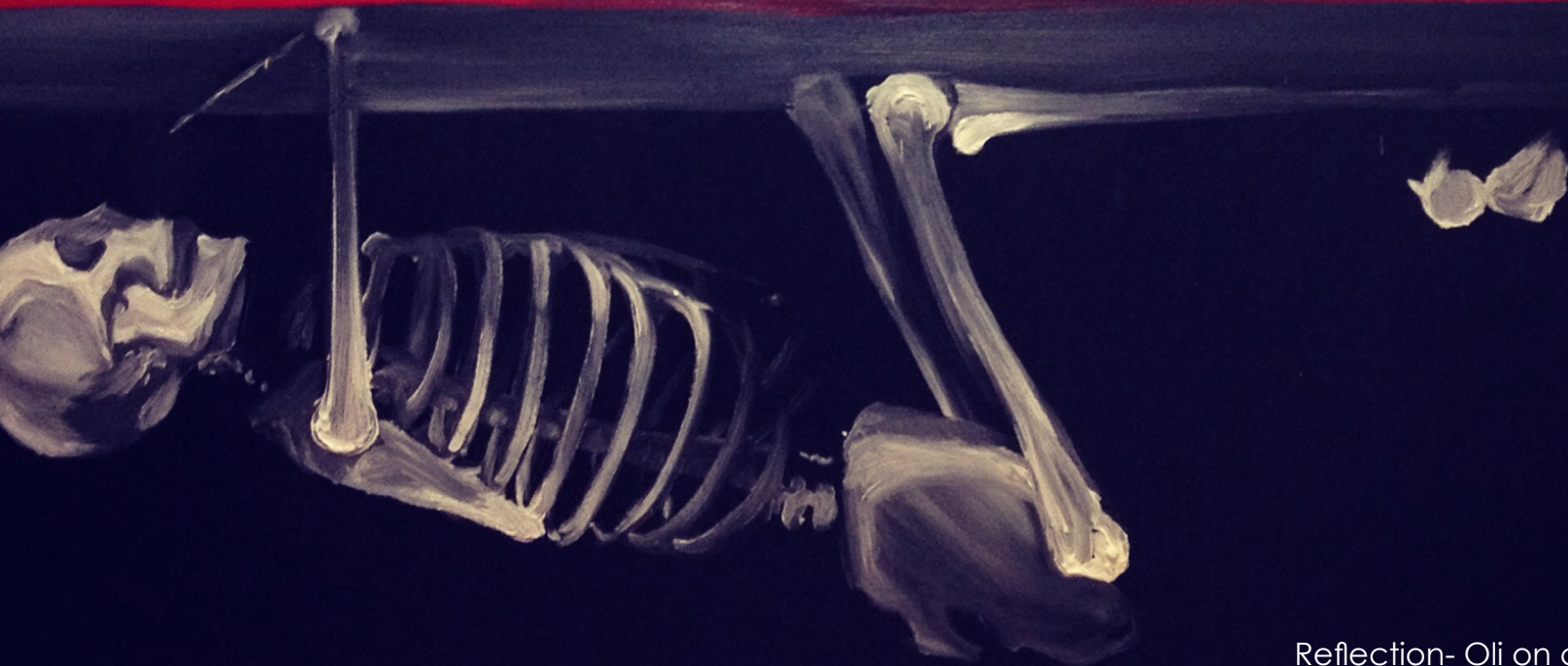
The Lime chair



ART



Breeze - Oli on canvas



Reflection- Oli on canvas

Curriculum Vitae

EDUCATION:

University of Arizona: Bachelor of Architecture	2009-2014
Bellevue Community College: AA with a focus on business	1996-2008
Liberty High School + Running start at Bellevue College	1993-1997

WORK EXPERIENCE:

Bank of America, teller + accounts	2007 -2011
Bellevue Community College, book keeper	2006-2007
Macys, makeup artist for Estee Lauder	2005-2006

RECOGNITION:

Academic Honorable Mention	12/9/09
Academic Honorable Mention	05/05/10
Academic Honorable Mention	12/19/13

TRAVEL:

Europe	North America	Africa	Middle East
Greece	USA	South Africa	Turkey
England	Canada		
France			
Italy			
Portugal			
Spain			
Germany			
Czech			

C/V

SKILLS:

Adobe InDesign
Adobe Illustrator
Adobe Photoshop
Adobe Premiere
Autodesk 3DS Max
Autodesk Revit
Grasshopper
Microsoft Office
Rhinoceros
3D Printing
Laser Cutting
Wood + Metal Shop
Physical Modeling
Hand Drafting
Painting

REFERENCES:

Michael Kothke
CAPLA Lecturer
mkothke@email.arizona.edu
(520) 834 - 2326

Matthew Trzebiatowski
Studio Crit
matthew@blankspaces.net

